

# Taxonomic review of the subgenus *Tatsipolia* Benedek, Behounek, Floriani & Saldaitis of the genus *Dasypolia* Guenée with descriptions of two new species from southern Xizang, China (Insecta, Lepidoptera, Noctuidae)

Enyong Chen<sup>1</sup>, Zhaohui Pan<sup>1</sup>, Anton V. Volynkin<sup>2</sup>,  
Aidas Saldaitis<sup>3</sup>, Balázs Benedek<sup>4</sup>

**1** Key Laboratory of Forest Ecology in Tibet Plateau (Institute of Plateau Ecology, Tibet Agricultural and Animal Husbandry University), Ministry of Education, Linzhi 860000, China **2** Altai State University, Lenina Avenue, 61, RF-656049, Barnaul, Russia **3** Nature Research Centre, Akademijos str., 2, LT-08412, Vilnius-21, Lithuania **4** H-2045 Törökbálint, Árpád u. 53, Hungary

Corresponding authors: Zhaohui Pan ([panzhaohui2005@163.com](mailto:panzhaohui2005@163.com)), Anton V. Volynkin ([monstruncusarctia@gmail.com](mailto:monstruncusarctia@gmail.com))

Academic editor: Donald Lafontaine | Received 29 March 2022 | Accepted 20 June 2022 | Published 3 August 2022

<https://zoobank.org/6368C676-ABAC-40A1-8147-342D9569C40D>

**Citation:** Chen E, Pan Z, Volynkin AV, Saldaitis A, Benedek B (2022) Taxonomic review of the subgenus *Tatsipolia* Benedek, Behounek, Floriani & Saldaitis of the genus *Dasypolia* Guenée with descriptions of two new species from southern Xizang, China (Insecta, Lepidoptera, Noctuidae). ZooKeys 1115: 187–198. <https://doi.org/10.3897/zookeys.1115.84527>

## Abstract

The subgenus *Tatsipolia* Benedek, Behounek, Floriani & Saldaitis, 2011 of the genus *Dasypolia* Guenée, 1852 is reviewed. Two new species, *D. (T.) sejilaensis* **sp. nov.** and *D. (T.) cerritula* **sp. nov.** are described from the Linzhi (Nyingchi) Prefecture in southern Xizang, China. The adults and the male and female genitalia of all species in the subgenus are illustrated. Additionally, *Dasypolia (Auropolia) carlotta* Floriani, Benedek, Behounek & Saldaitis, 2011 is reported from Xizang for the first time.

## Keywords

Antitypina, new record, Noctuinae, Owlet moth, systematics, taxonomy, Xylenini

## Introduction

*Dasypolia* Guenée, 1852 is a large noctuid genus distributed in the Palearctic region and reaching its greatest diversity in high mountain areas of Asia. The genus belongs to the subtribe Antitypina of the tribe Xylenini of the subfamily Noctuidae (Lafontaine and Schmidt 2010; Zahiri et al. 2011; Keegan et al. 2021). Many species of *Dasypolia* were described during the last two decades (Nupponen and Fibiger 2006; Ronkay et al. 2010; Benedek et al. 2011, 2014; Volynkin 2012; Benedek and Saldaitis 2014; Ronkay et al. 2014). However, it is likely that additional undescribed species will be found.

The subgenus *Tatsipolia* Benedek, Behounek, Floriani & Saldaitis, 2011 was erected to solely include *D. ruficilia* Benedek, Behounek, Floriani & Saldaitis, 2011 (Benedek et al. 2011). Subsequently, another species of the genus, *D. vignai* L. Ronkay & Zilli, 1993 was assigned to *Tatsipolia* after the discovery of the male of the species (Benedek and Saldaitis 2014). During entomological studies in the southern Xizang Province of China short series of two unknown small *Dasypolia* specimens was collected by the senior and the second authors of the present paper. After comparing the male genitalia structures of these specimens with other species in the genus, they proved to belong to the subgenus *Tatsipolia* and express significant distinctive characters. The species are described herein as new to science.

## Materials and methods

Abbreviations for private and institutional collections used herein: **AFM** = collection of Alessandro Floriani (Milan, Italy); **HNHM** = Hungarian Natural History Museum (Budapest, Hungary); **TAAHU** = Tibet Agricultural and Animal Husbandry University (Linzhi, China); **ZSM** = Bavarian State Collection of Zoology (Zoologische Staatssammlung München, Munich, Germany). Other abbreviations used: **HT** = holotype; **PT** = paratype. In the type labels citations, different labels are separated by a slash ("/") whereas the different lines of the same label are separated by an upright slash ("|").

The male and female genitalia terminology follows Kononenko (2010).

## Results

**Noctuidae Latreille, 1809**

**Noctuidae Latreille, 1809**

**Xylenini Guenée, 1837**

**Antitypina Forbes & Franclemont, 1954**

**Genus *Dasypolia* Guenée, 1852**

**Subgenus *Tatsipolia* Benedek, Behounek, Floriani & Saldaitis, 2011**

*Dasypolia* (*Tatsipolia*) Benedek et al. 2011: 108. Type species: *Dasypolia* (*Tatsipolia*) *ruficilia* Benedek, Behounek, Floriani & Saldaitis, 2011, by original designation.

**Diagnosis.** Members of the subgenus are small moths (forewing length is 11–13 mm) externally similar to taxa of the subgenus *Cteipolia*. However, despite the external similarity, the subgenus is characterised by the following diagnostic features in the male genitalia: (1) The uncus is short but wide, triangular, dorso-ventrally flattened; (2) The harpe is reduced, tubercle- or spine-like; (3) The digitus is robust, thorn-like; (4) The juxta bears a medial process posteriorly; and (5) The phallus is relatively short but broad, with vesica bearing one or two clusters of spine-like cornuti. In the female genitalia, the broad ostium bursae and the sideways curved ductus and corpus bursae are characteristic for the subgenus.

**Distribution.** Species of the subgenus are known only from south-western China (Sichuan and southern Xizang).

**Species content of *Dasypolia* (*Tatsipolia*).**

*D. (T.) sejilaensis* sp. nov.

*D. (T.) cerritula* sp. nov.

*D. (T.) vignai* L. Ronkay & Zilli, 1993.

*D. (T.) ruficilia* Benedek, Behounek, Floriani & Saldaitis, 2011.

***Dasypolia* (*Tatsipolia*) *sejilaensis* sp. nov.**

<https://zoobank.org/9AD848DE-FFAF-4D00-B6E2-CB8F8A2DACBE>

Figs 1–3, 9, 10, 15

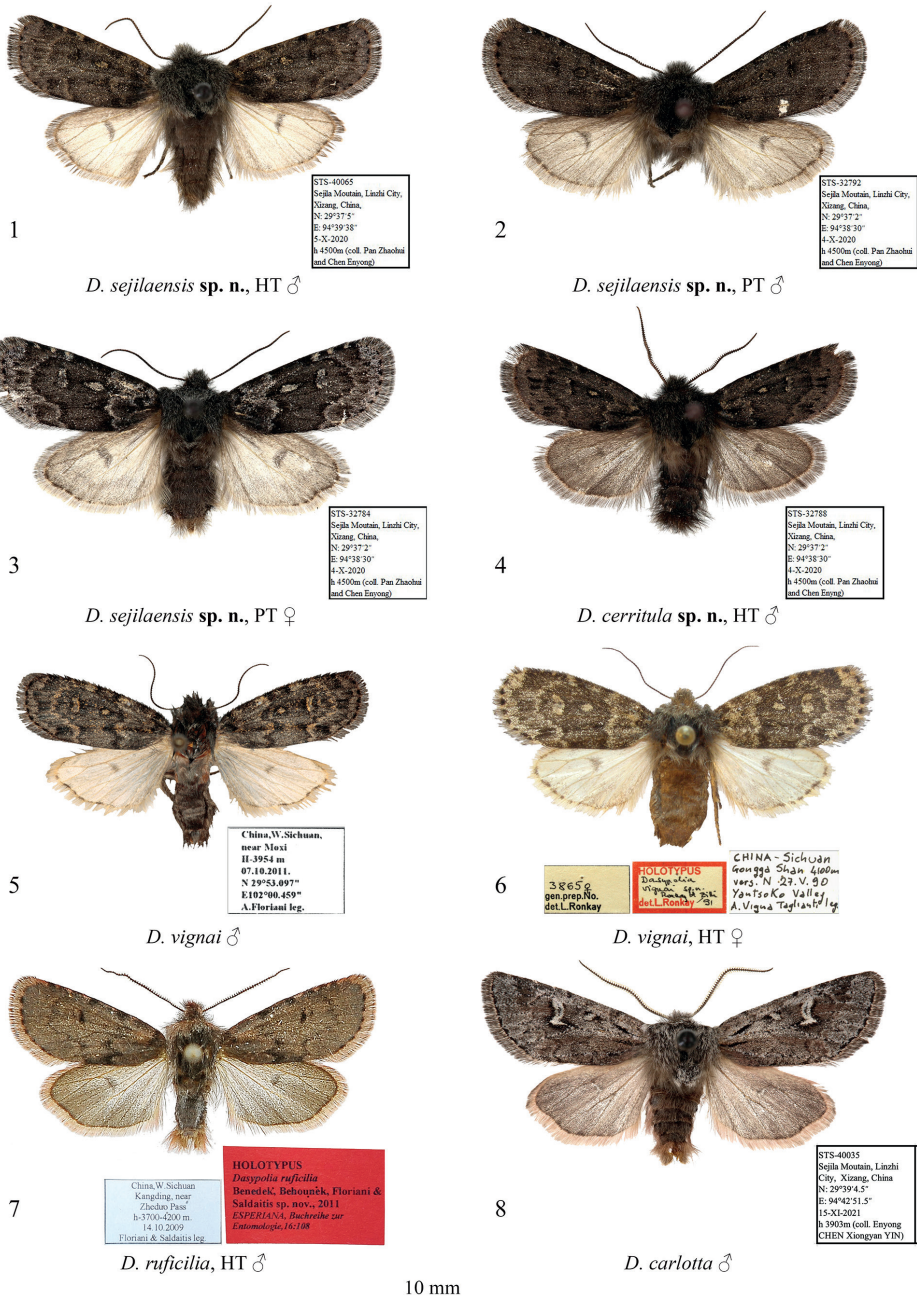
**Type material.** *Holotype* (Figs 1, 9): male, “STS-40065 | Sejila Mountain, Linzhi City, | Xizang, China, | N:29°37'5" | E:94°39'38" | 5-X-2020 | h [Altitude] 4500 m (coll. Pan Zhaohui | and Chen Enyong)” gen. prep. in glycerol by Enyong Chen (TAAHU).

**Paratypes:** 5 males, 1 female, Sejila Mountain, Linzhi City, Xizang, China, 29°37'2"N, 94°38'30"E, 4-X-2020, h [Altitude] 4500 m (coll. Pan Zhaohui | and Chen Enyong), unique numbers: STS-32784, STS-32786, STS-32789–32792, gen. preps. in glycerol by Enyong Chen (TAAHU).

**Diagnosis.** The new species is externally reminiscent of *D. vignai* but is distinguished by the straight costal margin of the forewing, the more elongate forewing apex, the more diffuse forewing pattern in males, and the longer discal spot of the hindwing. Additionally, compared to *D. vignai*, the reniform stigma of *D. sejilaensis* sp. nov. is positioned closer to the forewing costa, and the pale suffusion on the transverse lines and stigmata are grey whereas they are brown in the congener. The male genital capsule of the new species differs clearly from *D. vignai* in the broader valva with a broader and less down curved cucullus, the shorter but considerably thicker, up-curved digitus (it is down curved in *D. vignai*), the broader sacculus and the less prominent, triangular ventral lobe of the valva (whereas it is more rounded in *D. vignai*). Additionally, the uncus, the penicular lobe and the juxta of *D. sejilaensis* sp. nov. are wider than in *D. vignai*. The phallus of the new species is shorter and broader than in *D. vignai* (in proportion to the genital capsule). The vesicae of the two species are similar but the cornuti are more or less equal in size in *D. sejilaensis* sp. nov. whereas the distal cornuti of *D. vignai* are markedly longer and thicker than the proximal ones. In the female

genitalia, *D. sejilaensis* sp. nov. differs from *D. vignai* in the longer apophyses anteriores (in proportion to the ovipositor), the narrower, more asymmetrically sclerotised and sideways curved ductus bursae (it is nearly straight in *D. vignai*), and the straight posterior section of the corpus bursae which is sideways curved in *D. vignai*. The detailed comparison with *D. cerritula* sp. nov. is provided below in the diagnosis of the latter species.

**Description. External morphology of adults** (Figs 1–3). Forewing length 11–12 mm in males (11.5 mm in the holotype) and 13 mm in female. Antenna serrulate in male and filiform in female. Head and thorax covered with long hair-like scales, dark brown with admixture of pale grey. Forewing elongate, narrow, with almost parallel costal and anal margins and convex outer margin. Forewing ground colour dark brown, with intense pale grey suffusion along transverse lines and in subterminal area in female; costal margin with diffuse ochreous-brown or grey spots of various sizes. Forewing pattern diffuse, blackish-brown, more distinct in female. Subbasal line short, indistinct. Antemedial line sinuous, double. Orbicular stigma elliptical, filled with ochreous scales in male and pale grey scales in female. Reniform stigma narrow, filled with pale grey scales in female. Postmedial line medially curved, serrulate in female. Subterminal line interrupted into row of indistinct dash-like spots of various sizes between veins. Terminal line interrupted into blackish spots between veins. Outer margin edged with rusty-brown scales. Forewing cilia long, dark brown. Hindwing creamy with greyish-brown suffusion subterminally and terminally and along costal and anal margins. Discal spot large, falcate. Hindwing cilia long, creamy with admixture of brownish-grey scales. Abdomen covered with long hair-like scales, uniform brown. **Male genitalia** (Figs 9, 10). Tegumen short with large trapezoid penicular lobes. Vinculum longer than tegumen, robust, U-shaped. Valva lobular with heavily sclerotised costa and weakly sclerotised, short, broadly triangular and apically rounded ventral lobe. Digitus robust, directed distally, with up curved and distally tapered distal section. Cucullus short, trapezoid, densely covered with hair-like setae. Sacculus short but broad, elliptical. Clasper slightly curved and dilated distally, with very short, tubercle-like harpe. Uncus short but broad, triangular with rounded apex, dorso-ventrally flattened, weakly sclerotised. Juxta broad, shield-like, bearing broad, triangular and apically pointed, heavily sclerotised medial process posteriorly. Anellus weakly granulose. Phallus broad with rounded coecum, somewhat dilated distally. Main chamber of vesica somewhat shorter than phallus, tapered distally, directed ventro-distally, weakly granulose, with short semiglobular dorsal subbasal diverticulum and lengthwise cluster of 6–7 small but robust spike-like cornuti dorso-medially. **Female genitalia** (Fig. 15). Anterior section of corpus bursae membranous, dilated, teardrop-shaped. Posterior section of corpus bursae equal in width to anterior section of ductus bursae, membranous, tubular. Appendix bursae short and narrow, conical, positioned postero-laterally on right side at junction with ductus bursae. Ductus bursae short, its anterior section heavily sclerotised, dorso-ventrally flattened, strongly curved sideways to the right. Posterior section of ductus bursae funnel-like, bearing short, band-shaped antevaginal plate. Ostium bursae broad. Ovipositor short, broad, conical. Apophyses long and thin, apophysis anterioris slightly shorter than apophysis posterioris. Papilla analis setose.



**Figures 1–8.** *Dasypolia* (*Tatsipolia* and *Auropolia*) spp., adults. Depositories of the specimens: **1–4** and **8** in TAAHU **5** in AFM **6** in HNHM (photo by B. Tóth) **7** in ZSM.

**Distribution.** The new species is known only from Sejila Mountain in southern Xizang Province of China.

**Etymology.** The specific epithet refers to the type locality.



***Dasypolia (Tatsipolia) cerritula* sp. nov.**

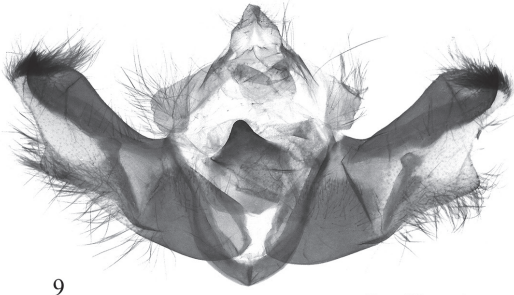
<https://zoobank.org/CC24CD6D-E613-4517-8E36-9FD1FCE81CE3>

Figs 4, 11

**Type material. *Holotype*** (Figs 4, 11): male, “STS-32788 | Sejila Mountain, Linzhi City, | Xizang, China, | N:29°37'2" | E:94°38'30" | 4-X-2020 | h [Altitude] 4500 m (coll. Pan Zhaohui | and Chen Enyong)” gen. prep. in glycerol by Enyong Chen (TAAHU).

**Diagnosis.** The new species is very similar to the sympatric *D. sejilaensis* sp. nov. but differs in the greyish-brown hindwing with a smaller and rounded discal spot whereas the hindwing of *D. sejilaensis* sp. nov. is creamy with intense greyish suffusion outwardly and along the costal and the anal margins, and the discal spot is large and falcate. The abdomen of *D. cerritula* sp. nov. is covered with black hair-like scales medially and distally whereas it is monotonous brown in *D. sejilaensis* sp. nov. Compared to *D. sejilaensis* sp. nov., the male genital capsule of *D. cerritula* sp. nov. has a narrower uncus, a larger penicular lobe with a more elongated posterior corner, and a shorter valva with a markedly broader cucullus densely covered with more robust setae. Additionally, the digitus of *D. cerritula* sp. nov. is shorter and narrower than in *D. sejilaensis* sp. nov., the ventral lobe of the valva is conspicuously narrower and shorter, the harpe is absent (it is present in *D. sejilaensis* sp. nov.), and the juxta is narrower and bears a somewhat shorter and basally broader posterior medial process. The phalli of the two species display no remarkable differences. The vesica of *D. cerritula* sp. nov. is similar to that of *D. sejilaensis* sp. nov. but differs in the presence of an additional small cluster of small spine-like cornuti ventrally, and the dorsal cluster consisting of markedly larger cornuti.

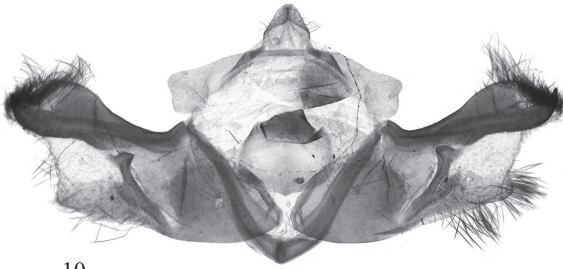
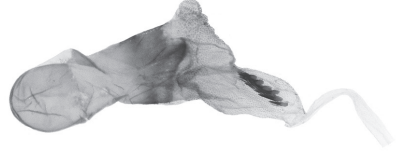
**Description. External morphology of adult** (Fig. 4). Forewing length 11.5 mm in holotype male. Male antenna serrulate. Head and thorax covered with long hair-like scales, dark brown with admixture of pale grey. Forewing elongate, narrow, with almost parallel costal and anal margins and convex outer margin. Forewing ground colour dark brown with black suffusion in medial area; costal margin with diffuse pale brown spots of various sizes. Forewing pattern diffuse, blackish-brown. Subbasal line short, indistinct. Subbasal lengthwise dash narrow, diffuse. Antemedial line sinuous, with pale brown suffusion inwardly. Orbicular stigma elliptical, filled with pale brown scales. Reniform stigma narrow, filled with pale brown scales. Postmedial line medially curved, slightly dentate posteriorly. Subterminal line interrupted into row of blackish cuneal spots of various sizes between veins. Terminal line indistinct, interrupted into small diffuse blackish spots between veins. Outer margin edged with rusty-brown scales. Forewing cilia long, dark brown. Hindwing brown with somewhat paler subbasal and medial areas. Discal spot small, rounded, diffuse. Outer margin edged with rusty-brown scales. Hindwing cilia long, creamy with admixture of brownish-grey scales. Abdomen covered with long hair-like scales, brown with strong admixture of black scales medially and posteriorly.



9

***D. sejilaensis* sp. n., HT**

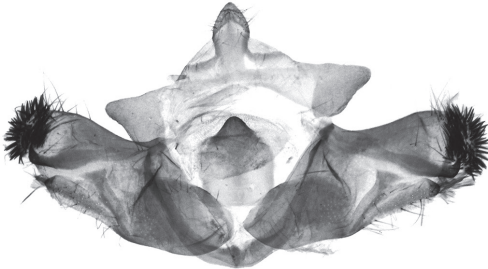
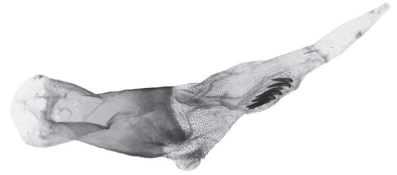
China, Xizang, Linzhi City, Sejila Mt., gen. prep. by Enyong Chen



10

***D. sejilaensis* sp. n., PT**

China, Xizang, Linzhi City, Sejila Mt., gen. prep. by Enyong Chen



11

***D. cerritula* sp. n., HT**

China, Xizang, Linzhi City, Sejila Mt., gen. prep. by Enyong Chen

**Figures 9–11.** *Dasyptolia* (*Tatsipolia*) spp., male genitalia. The specimens dissected are deposited in TAAHU.

**Male genitalia** (Fig. 11). Tegumen short, penicular lobe large, trapezoid with elongate posterior corner. Vinculum longer than tegumen, robust, U-shaped. Valva lobular with heavily sclerotised costa and short, triangular, moderately sclerotised ventral lobe. Digitus heavily sclerotised, directed ventro-distally, with up curved and apically pointed distal section. Cucullus broad, rounded, densely covered with robust spine-like setae.

Sacculus short but broad, elliptical. Clasper slightly curved and dilated distally, without harpe. Uncus short but broad, arrowhead-shaped with rounded apex, dorso-ventrally flattened, weakly sclerotised. Juxta broad, rectangular with rounded corners, bearing broad, triangular and apically pointed, heavily sclerotised medial process posteriorly. Anellus weakly granulose. Phallus broad with rounded coecum, somewhat dilated distally. Main chamber of vesica somewhat shorter than phallus, tapered distally, directed ventro-distally, weakly granulose, with short semiglobular dorsal subbasal diverticulum and two lengthwise clusters of cornuti medially: dorsal one consisting of five robust, slightly curved spike-like cornuti, and ventral one consisting of four smaller spine-like cornuti.

**Female** unknown.

**Distribution.** The new species is known only from Sejila Mountain in southern Xizang Province of China.

**Etymology.** In Latin, ‘cerritulus’ means ‘weird.’ The specific epithet refers to the unusual cucullus densely covered with robust, spine-like setae.

### *Dasypolia (Tatsipolia) vignai* L. Ronkay & Zilli, 1992

Figs 5, 6, 12, 16

*Dasypolia (Sinipolia) vignai* Ronkay & Zilli, 1992: 500, fig. 12 (female genitalia), pl.

O: fig. 11 (adult) (Type locality: “China – Sichuan, Gongga Shan 4100 m ... Yantso Valley”).

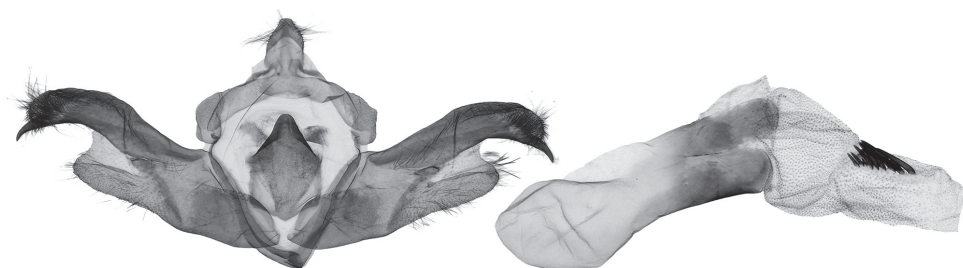
**Type material examined.** *Holotype* (Figs 6, 16): female, “China – Sichuan | Gongga Shan 4100 m | vers. N 27.V.[19]90 | Yantso Ko Valley, A. Vigna Taglianti leg.” | “Holotypus | *Dasypolia* | *vignai* sp. nov. | Ronkay & Zilli | det. L. Ronkay/91” / “3865♀ | gen. prep. No. | det.L.Ronkay” (HNHM).

**Additional material examined.** 1 male, China, W Sichuan, near Moxi, H-3954 m, 07.X.2011, 29°53.097'N, 102°00.459'E, A. Floriani leg., gen. prep. No.: JB2170 (prepared by Babics) (AFM).

**Diagnosis.** The forewing length is 12 mm in both sexes. The species is externally similar to *D. sejilaensis* sp. nov. and *D. cerritula* sp. nov. but is distinguished by the slightly convex costal margin of the forewing, the shorter and more rounded forewing apex, the more distinct forewing pattern in males, and the shorter discal spot of the hindwing. Additionally, compared to the congeners, the reniform stigma *D. vignai* is positioned more inwardly from the forewing costa. The male genitalia of *D. vignai* differ clearly from other species of the subgenus *Tatsipolia* in the narrow cucullus, the long, down curved and apically pointed digitus, and the large and rounded ventral lobe of the valva. The detailed comparison with *D. sejilaensis* sp. nov. is provided above in the diagnosis of the latter species.

**Distribution.** The species is known from two localities in Sichuan Province, southwestern China.

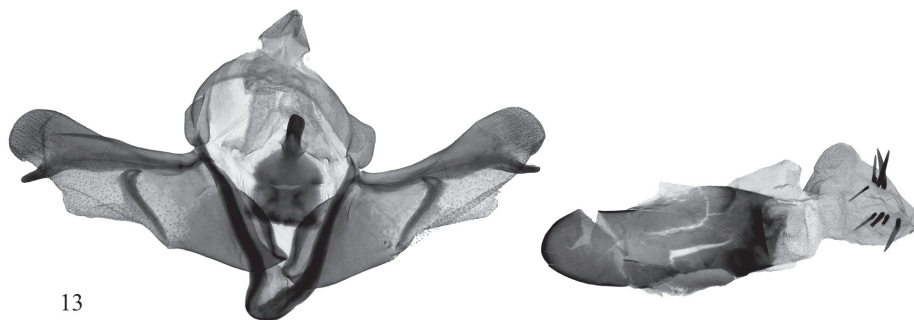




12

*D. vignai*

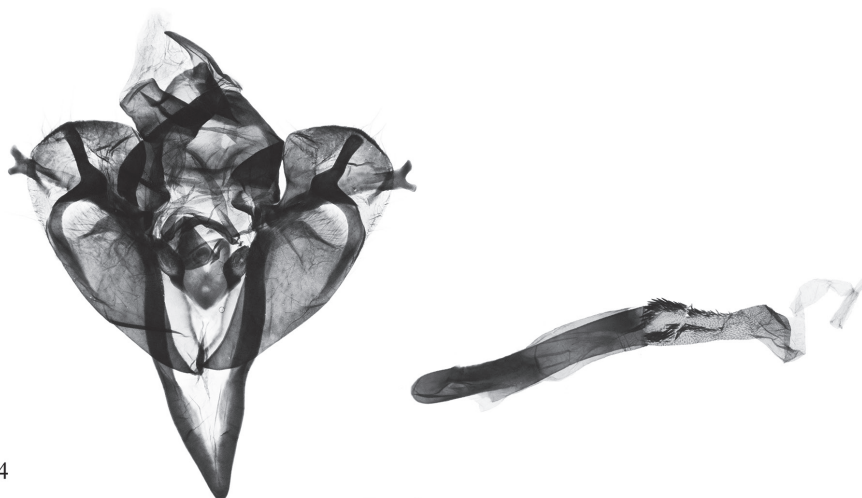
China, Sichuan, near Moxi, slide BJ2170 Babics



13

*D. ruficilia*, HT

China, Sichuan, near Moxi, slide BG7015 Behounek

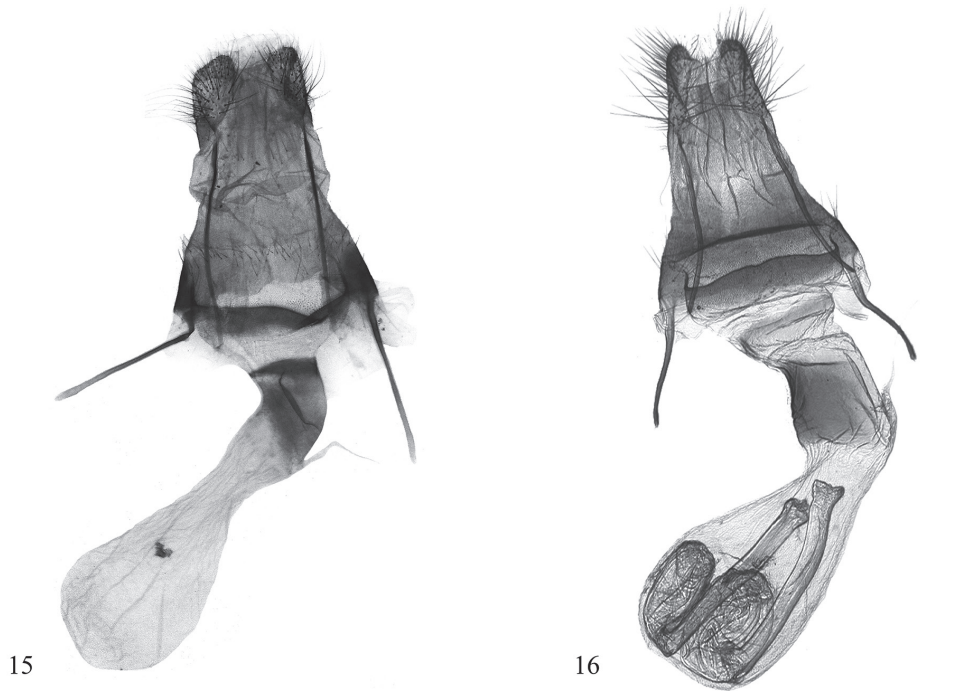


14

*D. carlotta*

China, Xizang, Linzhi City, Sejila Mt., gen. prep. by Enyong Chen

**Figures 12–14.** *Dasyptolia* (*Tatsipolia* and *Auropolia*) spp., male genitalia. Depositories of the specimens dissected: **12** in AFM **13** in ZSM **14** in TAAHU.

***D. sejilaensis* sp. n., PT**

China, Xizang, Linzhi City, Sejila Mt., gen. prep. by Enyong Chen

***D. vignai*, HT**

China, Sichuan, Gongga Shan, slide RL3865 Ronkay

**Figures 15–16.** *Dasypolia* (*Tatsipolia*) spp., female genitalia. Depositories of the specimens dissected: **15** in TAAHU **16** in HNHM (photo by B. Tóth).

***Dasypolia* (*Tatsipolia*) *ruficilia* Benedek, Behounek, Floriani & Saldaitis, 2011**

Figs 7, 13

*Dasypolia* (*Tatsipolia*) *ruficilia* Benedek, Behounek, Floriani & Saldaitis, 2011: 108, fig. 2 (male genitalia), pl. 15: fig. 4 (adult) (Type locality: “China, W. Sichuan, Kangding, near Zheduo Pass, 3700–4200 m”).

**Type material examined. Holotype** (Figs 7, 13): male, “China, W.Sichuan | Kangding, near | Zheduo Pass | h-3700–4200 m | 14.10.2009 | Floriani & Saldaitis leg.” / red label “Holotypus | *Dasypolia ruficilia* | Benedek, Behounek, Floriani & | Saldaitis sp. nov., 2011 | *Esperiana*, Buchreihe zur | Entomologie, 16: 108,” gen. prep. No.: BG7015 (prepared by Behounek) (ZSM).

**Diagnosis.** The forewing length is 12 mm in the holotype male. The species externally differs from other members of the subgenus *Tatsipolia* in the monotonous pale brown forewing colouration and reddish-brown forewing cilia. The male genital capsule is characterised by the broad, trapezoid and weakly setose cucullus and the nearly straight digitus. The phallus of *D. ruficilia* is distally tapered whereas it is distally somewhat dilated in other species in the subgenus. The vesica of *D. ruficilia* bears two short

lengthwise clusters consisting of four long and thin spine-like cornuti each, whereas the clusters of other *Dasypolia* (*Tatsipolia*) species consist of more robust cornuti.

The female is unknown.

**Distribution.** The species is known only from its type locality in the western Sichuan Province of China (Benedek et al. 2011).

### Subgenus *Auropolia* Hreblay & L. Ronkay, 1999

#### *Dasypolia* (*Auropolia*) *carlotta* Floriani, Benedek, Behounek & Saldaitis, 2011

Figs 8, 14

*Dasypolia* (*Auropolia*) *carlotta* Floriani, Benedek, Behounek & Saldaitis in Benedek et al. 2011: 111, fig. 6 (male and female genitalia), pl. 14: figs 7–9 (adults) (Type locality: “China, W. Sichuan, Kangding, near Zheduo Pass, 3700–4200 m”).

**Material examined.** 1 male, Sejila Mountain, Linzhi City, Xizang, China, 29°39'4.5"N, 94°42'51.5"E, 15-XI-2021, [Altitude] h 4160 (coll. Enyong Chen, Xiongyan Yin), unique number: STS-40035, gen. prep. in glycerol by Enyong Chen (TAAHU).

**Distribution.** The species is known from south-western China: western Sichuan (Benedek et al. 2011), north-western Yunnan (Benedek and Saldaitis 2014) and southern Xizang (new record).

### Acknowledgements

The work of Enyong Chen and Zhao-Hui Pan was supported by the Second Tibetan Plateau Scientific Expedition and Research Program (Grant No. 2019QZKK05010602) and Tutor innovation project of Forestry Subject of Tibet agricultural and Animal Husbandry University (Species diversity and conservation of Geometridae (Lepidoptera) in southeastern Tibet). Anton Volynkin, Aidas Saldaitis and Balázs Benedek had no foundation. We express our sincere thanks to National Forest Ecosystem Observation & Research Station of Nyingchi Tibet, Key Laboratory of Forest Ecology in Tibet Plateau, Key Laboratory of Alpine Vegetation Ecological Security in Tibet, and South-East Tibetan plateau Station for integrated observation and research of alpine environment in Linzhi. We are also indebted to Dr Balázs Tóth (HNHM, Budapest, Hungary) for pictures of the holotype of *D. vignai* provided.

### References

- Benedek B, Saldaitis A (2014) New *Dasypolia* species from China, part II (Lepidoptera, Noctuidae). *Esperiana* 19: 103–119.
- Benedek B, Behounek G, Floriani A, Saldaitis A (2011) New *Dasypolia* species (Lepidoptera, Noctuidae) from China, Sichuan, part I (plates 14–17). *Esperiana* 16: 107–125.

- Benedek B, Saldaitis A, Babics J (2014) On the taxonomy of the genus *Dasypolia* (Lepidoptera, Noctuidae, Xylenini). Entomofauna (Supplement 17): 17–28.
- Keegan KL, Rota J, Zahiri R, Zilli A, Wahlberg N, Schmidt BC, Lafontaine JD, Goldstein PZ, Wagner DL (2021) Toward a stable global Noctuidae (Lepidoptera) taxonomy. Insect Systematics and Diversity 5(3): 1–24. <https://doi.org/10.1093/isd/ixab005>
- Kononenko VS (2010) Noctuidae Sibiricae. Vol. 2. Micronoctuidae, Noctuidae: Rivulinae—Agaristinae (Lepidoptera). Entomological Press, Sorø, 475 pp.
- Lafontaine JD, Schmidt BC (2010) Annotated check list of the Noctuoidea (Insecta, Lepidoptera) of North America north of Mexico. ZooKeys 40: 1–239. <https://doi.org/10.3897/zookeys.40.414>
- Nupponen K, Fibiger M (2006) Additions and corrections to the list of Bombyces, Sphingides and Noctuidae of the Southern Ural Mountains. Part I. (Lepidoptera: Lasiocampidae, Lemoniidae, Sphingidae, Notodontidae, Noctuidae, Pantheidae, Lymantriidae, Nolidae, Arctiidae) (plates 22–26). Esperiana 12: 167–195.
- Ronkay L, Zilli A (1993) New high montane *Dasypolia* species from Sichuan and Sikkim with remarks on the dasypolioid generic complex. Esperiana 3: 497–506.
- Ronkay G, Ronkay L, Gyulai P, Hacker H (2010) New Xylenini (Lepidoptera, Noctuidae, Xyleninae) species and genera from the wide sense Himalayan region. Esperiana 15: 245–358.
- Ronkay G, Ronkay L, Gyulai P (2014) New Xyleninae and Psaphidinae species from Asia, with special reference to the Central and Inner Asiatic *Dasypolia* Guenée, 1852 (Lepidoptera, Noctuidae). Fibigeriana (Supplement 2): 141–169.
- Volynkin AV (2012) A review of the genus *Dasypolia* Guenée, 1852 from the Russian part of the Altai Mountain Country, with descriptions of two new species (Lepidoptera, Noctuidae). Zootaxa 3478(1): 416–428. <https://doi.org/10.11646/zootaxa.3478.1.37>
- Zahiri R, Kitching IJ, Lafontaine JD, Mutanen M, Kaila L, Holloway JD, Wahlberg N (2011) A new molecular phylogeny offers hope for a stable family level classification of the Noctuoidea (Lepidoptera). Zoologica Scripta 4(2): 158–173. <https://doi.org/10.1111/j.1463-6409.2010.00459.x>