

Are *Cristaria herculea* (Middendorff, 1847) and *Cristaria plicata* (Leach, 1815) (Bivalvia, Unionidae) separate species?

Olga K. Klishko¹, Manuel Lopes-Lima^{2,3,4}, Elsa Froufe², Arthur E. Bogan^{4,5}

1 Institute of Natural Resources, Ecology and Criology, Russian Academy of Sciences Siberian Branch, Chita 672014, Russia **2** Interdisciplinary Centre of Marine and Environmental Research (CIIMAR/CIMAR), University of Porto, Rua dos Bragas 289, 4050-123 Porto, Portugal **3** Institute of Biomedical Sciences Abel Salazar (ICBAS), University of Porto, Rua de Jorge Viterbo Ferreira 228, 4050-313 Porto, Portugal **4** Mollusc Specialist Group, Species Survival Commission, International Union for Conservation of Nature (SSC/IUCN), c/o IUCN, 219 Huntingdon Road, Cambridge, United Kingdom **5** Research Laboratory, North Carolina State Museum of Natural Sciences, MSC 1626, Raleigh, NC 27699-1626, United States of America

Corresponding author: Manuel Lopes-Lima (lopeslima.ciimar@gmail.com)

Academic editor: Richard Willan | Received 12 March 2014 | Accepted 7 August 2014 | Published 1 September 2014

<http://zoobank.org/9D302A31-6237-46BE-83B3-1FBCF1384F05>

Citation: Klishko OK, Lopes-Lima M, Froufe E, Bogan AE (2014) Are *Cristaria herculea* (Middendorff, 1847) and *Cristaria plicata* (Leach, 1815) (Bivalvia, Unionidae) separate species? ZooKeys 438: 1–15. doi: 10.3897/zookeys.438.7493

Abstract

The number of species in the freshwater mussel genus *Cristaria* Schumacher, 1817 recognized from Far East Russia has varied over the last several decades. While some authors consider the occurrence of only one species, *Cristaria plicata* (Leach, 1815), widespread in East Asia, others, recognize two separate species *Cristaria herculea* (Middendorff, 1847) and *Cristaria tuberculata* Schumacher, 1817 from Far East Russia, distinct from *C. plicata*. For the present study, freshwater mussels, identified as *C. herculea*, were collected in the Upper Amur basin (Transbaikalia, Russia). The shell morphology and the whole soft body anatomy were analysed in detail and compared with previously published information on other *Cristaria* spp.. Additionally, a cytochrome oxidase subunit 1 (CO1) gene fragment was sequenced from foot tissue samples of selected animals, collected from the same region, and compared with published data. Based upon morphological similarities of glochidia and adult morphology and anatomy as well as the mitochondrial DNA sequence analysis, we consider *C. herculea* as a synonym of *C. plicata*. Further analysis of Far East Russia *C. herculea* and *C. tuberculata* specimens using both molecular and morphological characters should be carried in the future to enhance our knowledge about the taxonomy within the *Cristaria* genus. Moreover, a comprehensive revision of the genus *Cristaria* is needed, restricting the type locality and comparing topotypic specimens for both *C. plicata* and *C. tuberculata*, and including all recognized *Cristaria* species.

Keywords

Bivalvia, Unionidae, Anodontini, CO1, Transbaikalia, Russia

Introduction

Freshwater bivalves of the Unionidae provide important ecosystem functions and services (Vaughn and Hakenkamp 2001; Aldridge et al. 2007). However, many of their populations are in decline and this faunistic group is presently among the most threatened worldwide (Bogan 1993). In terms of conservation, it is essential to have a classification system that reflects the freshwater bivalve taxonomic diversity as well as their evolutionary relationships. Over the last decade, there have been an increasing number of taxonomy papers reflecting phylogenetic patterns with the aid of molecular tools. However, most included North American and European taxa. On the other hand, other taxa e.g. from the Southern Hemisphere or East Asian countries have been neglected and are still poorly studied. This is the case of *Cristaria* Schumacher, 1817, a relatively widespread genus in South East Asia, where its interspecific and intraspecific phylogenetic relationships are still not well understood.

The taxonomy and status of *Cristaria* species in Far East Russia has not been consistent among malacologists. While some authors, consider the presence of only one species, *Cristaria plicata* (Leach, 1815) which is widespread in Eastern Asia, from Russia (Amur River basin and Khanka Lake) to Japan and south to South Korea, China, Vietnam, Lao People's Republic, Thailand and Cambodia (Zhadin 1938, 1965; Haas 1969; Brandt 1974; Đặng et al. 1980; Kondo 2008; He and Zhuang 2013), others, consider *Cristaria herculea*, *Cristaria tuberculata*, and *Cristaria plicata* are separate species (Sayenko et al. 2005). *Cristaria herculea*, with a laterally compressed shell, is widespread in the whole Amur River basin including the Zeya, the Argun, the Nercha, the Shilka and the Onon rivers as well as Khanka Lake and Buir-Nur Lake (Mongolia) (Zatravkin and Bogatov 1987; Starobogatov et al. 2004; Klishko 2012). The other species recognized in Far East Russia, with an inflated shell, *C. tuberculata* Schumacher, 1817, is limited to the Far East Russia in Khanka Lake and the Ussury River basin (Moskvicheva 1973; Zatravkin and Bogatov 1987; Starobogatov et al. 2004). Curiously, and although no type locality for this species was given, *Cristaria tuberculata* is the type species of the genus and usually listed as a junior synonym of *Cristaria plicata* (Leach, 1815) (Simpson 1914; Haas 1969).

Cristaria herculea (Middendorff, 1847) known from the Transbaikalia, in Far East Russia, occurs mainly in rivers and reservoirs with slow or no currents, in a variety of substrates, including gravel, sand and mud, being tolerant of silty conditions. The fish-hosts, necessary for glochidia metamorphosis, are still unknown. The conservation status of *C. herculea* from the rivers of Transbaikalia was considered to be relatively stable during the last century. However, our research over the last ten years showed that the species has become very rare due to pollution and other anthropogenic impacts on

rivers and habitats. Under this view, *Cristaria herculea* was included in the Red Book of Transbaikalsky territory (Klishko 2012).

To solve taxonomic issues when conchological characters (especially shell convexity) form the basis of species separation, it is relevant to test these uncertainties with molecular DNA sequence analyses. Under these assumptions, the aims of this paper were to study the morphological and anatomical characteristics of *C. herculea* from the Upper Amur basin in Transbaikalia, to compare them with published *Cristaria* spp. data and to test the species level status of *C. herculea* with the use of molecular data.

Material and methods

Sampling and morphometry

Specimens of *C. herculea* were collected in 2008–2012 from the Shilka, the Nercha and the Onon rivers, from the Kharanorsky reservoir, situated in the upper reaches of the Amur (Transbaikalia, Russia), and also from Buir-Nur Lake (Mongolia) (Table 1). Foot tissue samples were collected from living mussels of the Onon River and Kharanorsky reservoir and were preserved in 96% non-denatured ethanol for molecular

Table 1. Shell morphometry characteristics of *Cristaria herculea* from the upper Amur River basin. L – shell length; H – maximal shell height; h – shell height measured from umbo; h_1 – shell height measured from middle lateral tooth to ventral margin; l_1 – the distance from umbo to posterior end of the lateral tooth; B – maximal shell inflation (width); $R_1 = B/l_1$, $R_2 = B/h_1$; n – number of measured shells; * – living mollusks dissected for the anatomical study and (n_1) – their number.

Characteristics	Kharanorsky reservoir	Onon River	Nercha River	Shilka River	Buir-Nur Lake
L, mm	128.7–290.0 258.0*	147.6–238.0 167.2*	120.2–174.0	152.0	148.9–151.0
H, mm	93.8–212.3 187.5*	94.9–124.8 102.0*	73.3–112.9	92.1	99.9–102.0
h, mm	65.3–148 130.6*	66.5–112.0 74.9*	51.6–80.0	66.3	69.2–71.1
h_1 , mm	75.0–161.2 152.5*	82.1–134.0 88.9*	68.7–98.1	82.3	63.1–64.9
l_1 , mm	52.5–113.0 104.9*	58.0–99.4 66.9*	50.0–74.0	58.2	83.0–84.8
B, mm	41.2–88.0 79.4*	44.3–76.1 50.7*	39.0–53.9	47.1	46.0–48.0
B/L	0.316 ± 0.0055 0.308*	0.294 ± 0.0169 0.289*	0.317 ± 0.007	0.309	0.312 ± 0.0065
R_1	0.760 ± 0.0311 0.756*	0.763 ± 0.0039 0.758*	0.768 ± 0.033	0.807	0.736 ± 0.0053
R_2	0.540 ± 0.0119 0.521*	0.552 ± 0.0192 0.570*	0.561 ± 0.0087	0.571	0.558 ± 0.0052
n (n_1)	5 (1)	4 (1)	3	1	3

analyses. The following shell dimensions (mm) were measured in all collected animals: length, width, height at umbo and maximal height. For species identification, the ratio of maximal shell inflation to the distance from the umbo to the posterior end of the posterior tooth was determined, according the identification key by Zatravkin and Bogatov (1987) and Starobogatov et al. (2004).

DNA extraction, PCR and sequencing analyses

Whole genomic DNA was extracted from small tissue pieces of two individuals (preserved in 96% ethanol) using a standard high-salt protocol (Sambrook, Fritsch and Maniatis 1989). A fragment of ~700 bp of CO1 gene was amplified by PCR, using the primers LCO_22me2 and HCO_700dy2 (Walker et al. 2006, 2007) with PCR conditions described in Froufe et al. (2014). Amplified DNA templates were purified and sequenced by a commercial company, Macrogen, using the same primers. Chromatograms were checked by eye using ChromasPro 1.41 (technelysium.com.au) and the alignment was performed using Bioedit v5.0.9 (Hall 1999). For a preliminary analysis, all *Cristaria* sp. CO1 sequences available on GenBank were downloaded (n=65). Afterwards, 52 of these sequences were excluded from the present analysis for clarity (they all represented different haplotypes that fell inside the *C. plicata* clade, see results; data not shown). A final alignment was analysed, where the selected outgroups included one *Anodonta beringiana* individual and one *Sinanodonta woodiana* (Table 2).

The final data set was then analysed using maximum likelihood (ML) and Bayesian inference (BI) methods. The best-fit model of nucleotide substitution evolution under corrected Akaike Information Criterion was estimated using JModelTest 2.1.4 (Darriba et al. 2012). Model GTR+I+G was chosen and used in the phylogenetic analyses. ML trees were built in RAxML 7.2.6 (Stamatakis 2006) running 1,000 bootstrap replicates and searching for the best-scoring ML tree. Phylogenetic BI was performed

Table 2. List of specimen samples sequenced (CO1) and GenBank accession numbers. *Unpublished

Species	Locality	Country	Code/GenBank	Study
<i>Cristaria herculea</i>	Onon River	Russia	Biv246	This study
<i>Cristaria herculea</i>	Charanorsky Reservoir	Russia	Biv247	This study
<i>Cristaria plicata</i>	Lower Yangtze	China	EU698893; EU698897; EU698913; EU698948	Jia and Li*
<i>Cristaria plicata</i>	Unknown	China	JF700152; JF700153	Zhang et al.*
<i>Cristaria plicata</i>	Zhejiang	China	FJ986302	Jiang, Zheng and Wang 2010
<i>Cristaria plicata</i>	Unknown	South Korea	GQ451860	Park et al.*
<i>Cristaria plicata</i>	Unknown	South Korea	GU944476	Lee et al. 2012
<i>Cristaria</i> sp.	Lower Yangtze	China	EU698909; EU698910; EU698940; EU698942	Jia and Li*
<i>Anodonta beringiana</i>	Jo-Jo Lake	Canada	DQ272370	Gustafson and Iwamoto 2005
<i>Sinanodonta woodiana</i>	Unknown	Poland	HQ283347	Soroka and Burzynski*

using MrBayes version 3.2.2 (Ronquist and Huelsenbeck 2003). Two independent runs 1 million generations long were sampled at intervals of 100 generations producing a total of 10,000 trees. Burnin was determined upon convergence of log likelihood and parameter estimation values using Tracer 1.6 (Rambaut and Drummond 2007). Estimates of sequence divergence (uncorrected p -distances) were assessed using MEGA 6 software (Tamura et al. 2013).

Results

Morphometry and species identification

The morphometric characteristics of *C. herculea* are summarized in Table 1. The shell length of the collected *Cristaria* individuals ranged from 120 to 290 mm, the maximum shell height from 73 to 212 mm and the shell width was 39–88 mm. The ratio of maximal shell inflation to the distance, measured from umbo to posterior end of the lateral tooth (R_1) was 0.76–0.81, and to shell height measured from the middle of the lateral tooth to ventral margin (R_2) – 0.52–0.57. This ratio enabled the identification of the collected mussels as *Cristaria herculea*, according to the published keys (Zatravkin and Bogatov 1987; Starobogatov et al. 2004)

Shell morphology

The shells from the reservoir are elongated diamond-shaped with a green-brown or red-brown coloured periostracum, with developed posterior dorsal wing and hardly expressed anterior wing (Fig. 1A, B). On the other hand, the shells from Buir-Nur Lake are oval-triangular with a dark brown or black coloured periostracum and with less developed or broken dorsal wing (Fig. 1 C). The shells from the different river biotopes are elongated, oval-triangular, which may become oval when a dorsal wing is eroded or broken, alate, and with a periostracum colour that varies from yellow-brown to dark brown or black; the posterior dorsal wing is underdeveloped and the anterior dorsal wing is absent (Fig. 1D–F). Umbos are broad and slightly elevated above the dorsal margin. The umbo sculpture is presented in the form of a few sub-concentric bars. The dorsal margin behind the umbo turns into the high posterior wing, which is sometimes eroded or broken. There are large undulating folds or ridges on the posterior slope extending onto the posterior dorsal wing that are expressed more clearly in smaller specimens. The shell anterior margin is straight and the ventral margin may vary from slightly convex to straight or even slightly concave. The posterior margin in river shells is evenly rounded, slightly curved or concave when meeting the dorsal margin. The lateral teeth are straight or slightly curved, one in each valve (Fig. 2). While the anterior adductor scar is deep, the posterior is shallow and slightly visible. The nacre is blue, pale-pink, or yellow-pink with large olive spots. The shell outlines

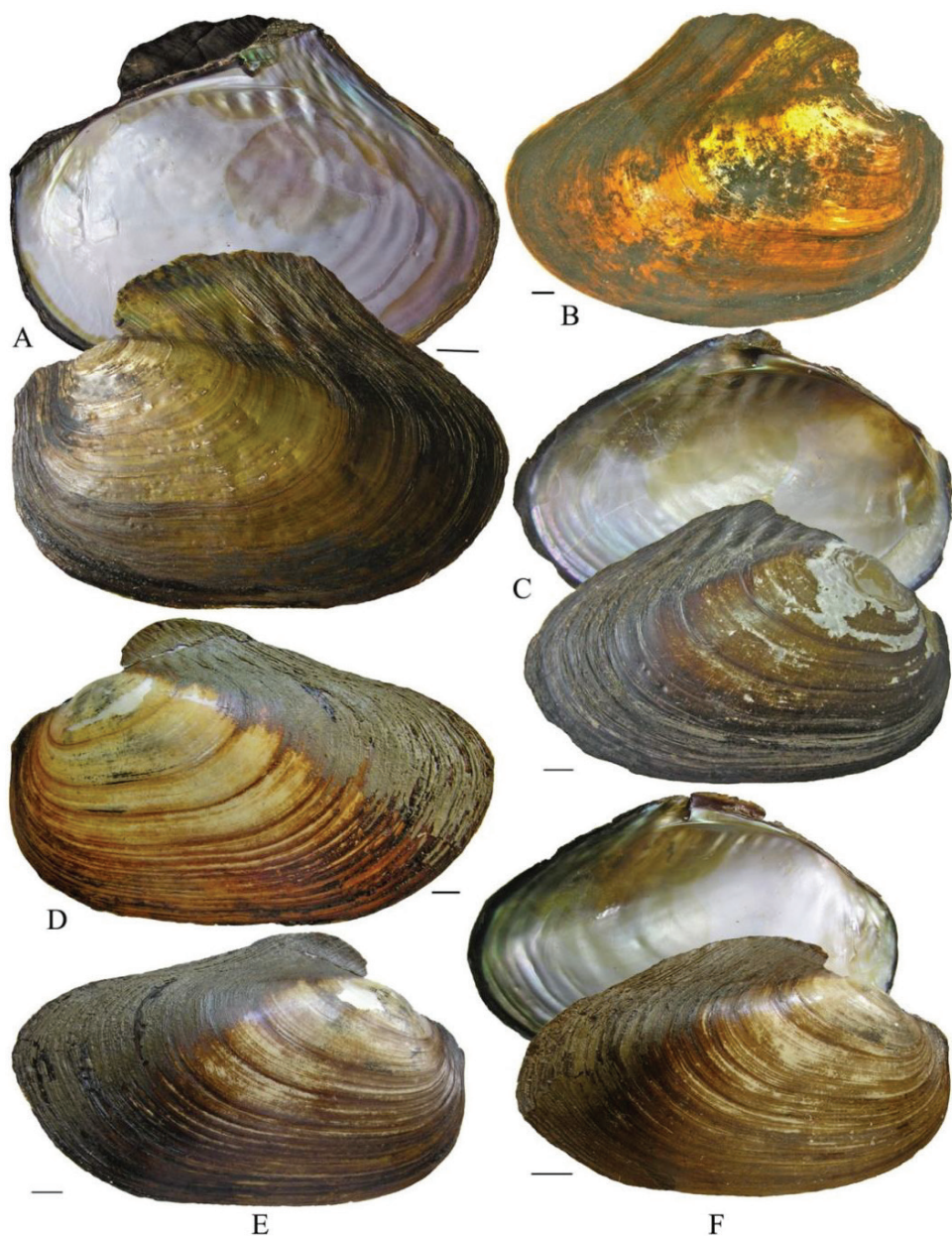


Figure 1. *Cristaria herculea* from Upper Amur River basin. **A, B** from Kharanorsky reservoir **C** from Buir-Nur Lake (Mongolia) **D** from Onon River **E** from Shilka River **F** from Nercha River. Scale bar 1 cm.

of river shells presented, in general, similar anterior margins with those from reservoirs but differ in having a smaller slope of the dorsal margin as seen in Fig. 3 (1–6).

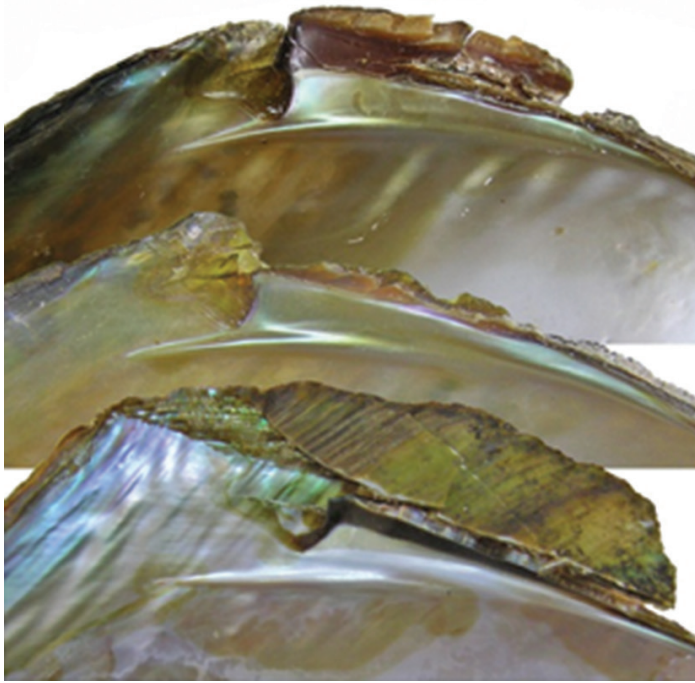


Figure 2. Lateral tooth of riverine shells (upper two) and from reservoir (lower).

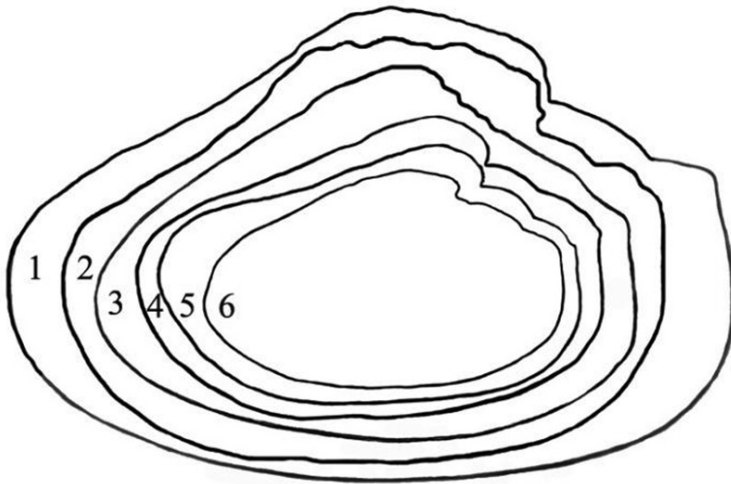


Figure 3. Shell outlines of *Cristaria herculea*. 1–3 (reservoir/lakes) 4–6 (rivers).

Soft body anatomy

A general view of the whole soft body morphology of *C. herculea* is shown in Fig. 4. Mantle colour is creamy white, with black or brown edges (Fig. 4a). Dorsal mantle

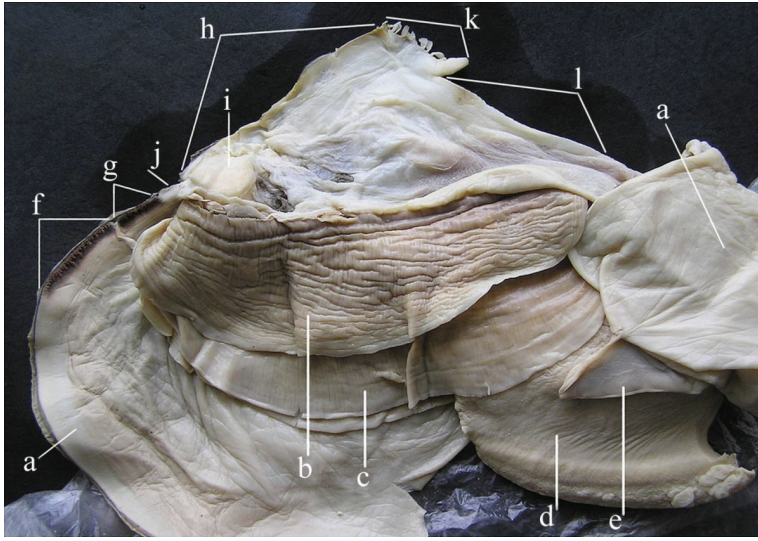


Figure 4. Morphology of *C. herculea* soft body: **a** – mantle, **b** – outer gill, **c** – inner gill, **d** – foot, **e** – labial palps, **f** – incurrent aperture, **g** – excurrent aperture, **h** – supra-anal aperture, **i** – dorsal adductor muscle, **j** – mantle bridge, **k** – dorsal wing mantle projections, **l** – muscular anterior margin of dorsal mantle wing.

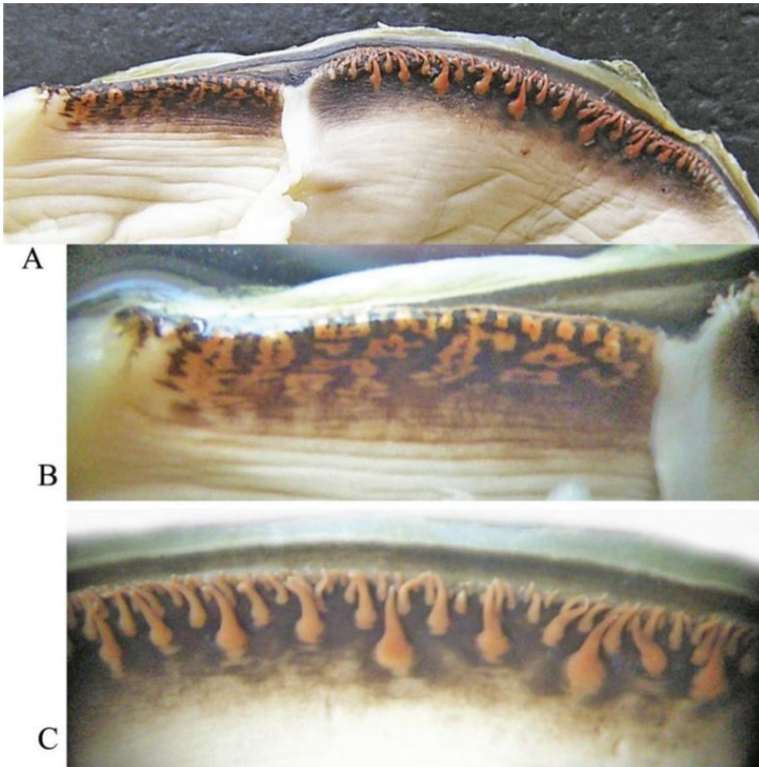


Figure 5. *Cristaria herculea*: **A** excurrent aperture (to the left) and incurrent aperture (to the right) **B** excurrent aperture (magnification) **C** shape of papillae in incurrent aperture (magnification).

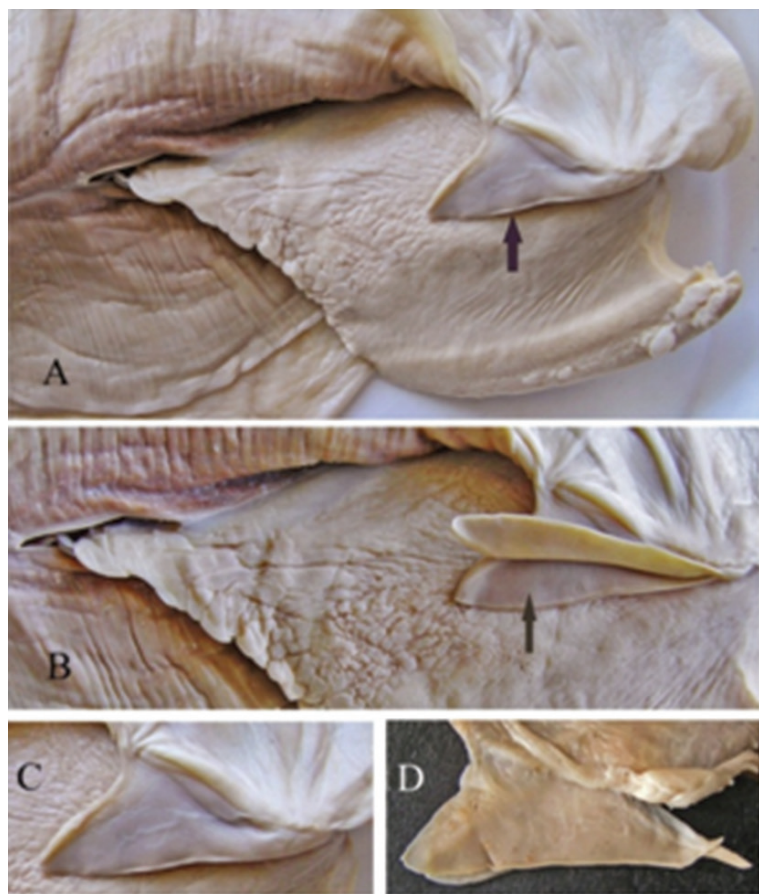


Figure 6. Labial palps of *C. herculea* (A, B, C) and of *Sinanodonta* sp. (D).

margin presents a well expressed high angle with a comb-shaped projections on the top (Fig. 4k) and a muscular anterior margin (Fig. 4l). Gills are creamy white or light brown; dorsal margin is straight to sinuous and ventral margin is moderately convex. Inner gills are much longer and higher than outer gills (Fig. 4b, c); gill length is 46–54% of shell length, gill height is 25–40% of gill length and outer gill height is 67–75% of the inner gill height. The foot is massive, creamy white and darker distally (Fig. 4d). Labial palps are triangular, creamy white to blue-grey, straight or slightly convex dorsally; straight or gently concave ventrally and bluntly pointed ventrally (Fig. 4e). Labial palp length is 3.9–4.2% of inner gill length and labial palp height 34–35% of labial palp length. Incurrent aperture (Fig. 4f) is longer than the excurrent aperture (Fig. 4g) and shorter than the supra-anal aperture (Fig. 4h). Supra-anal aperture opening is located from the dorsal margin of the posterior adductor muscle (Fig. 4i) to the posterior dorsal edge of the posterior mantle wing. Supra-anal aperture length is 20–25% of the shell length or double the length of the incurrent aperture; it is creamy white to pearly white inside, with a very thin yellow-brown marginal band.

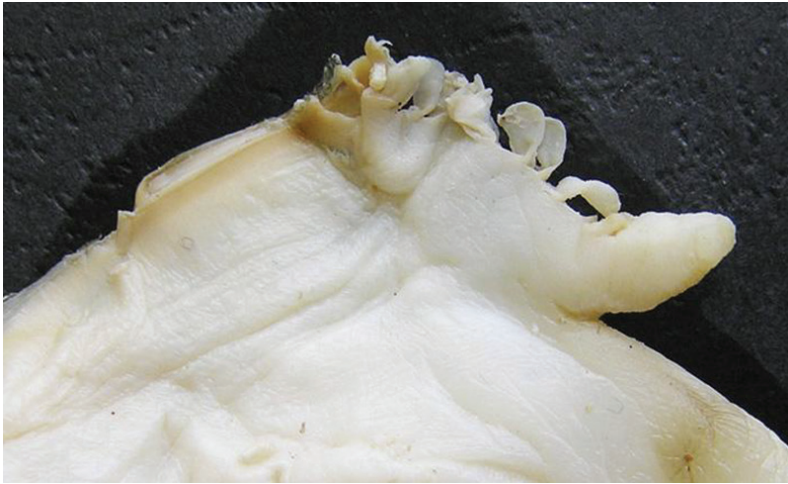


Figure 7. Dorsal mantle wing of *C. herculea* with comb-shaped projections.

Mantle bridge (Fig. 4j) separates the excurrent from the supra-anal aperture and is 8–10% of the supra-anal aperture length. Incurrent aperture length is 11–13% of the shell length, is creamy white to light tan within, with a combination of orange, brown and black basal to the papillae and to the bands margin which may present a reticular pattern. Excurrent aperture length is 46% of incurrent aperture length, colour is creamy white within with black or dark brown edges basally, margin papillate; have irregular mottled pigmentation of some combination of dark brown and orange (Fig. 5A–C). Papillae of the incurrent aperture are located in 3–4 rows, linear-fusiform in shape, mostly simple, with thickening of the papilla basement in the first and second medial rows, dark-orange; papillae of outer or lateral rows are shorter and more numerous (Fig. 5C). Labial palps of *Cristaria herculea* and *Sinanodonta* sp. are morphologically distinct (Fig. 6A–D). The anterior acuminate edges of *Sinanodonta* sp. labial palps are not completely attached to the mantle (Fig. 6D) in contrast with those on *C. herculea* (Fig. 6A–C). The distinctive feature of the genus *Cristaria* within the tribe Anodontini is the posterior dorsal mantle wing and projections (Fig. 7). The comb-shaped projections are dorsal extensions of the mantle that penetrate into the cavities of shell wing, to provide for the wing growth.

Phylogenetic analysis

Aligned CO1 sequences had a total length of 620 bp, with 143 polymorphic and 92 parsimony informative sites. No indels and no unexpected stop codons were observed after translating all sequences to amino acids. The tree topologies resulting from the single tree recovered from ML and BI approaches were congruent, and results of both analyses are shown in Figure 8. Two major mtDNA clades were retrieved with strong

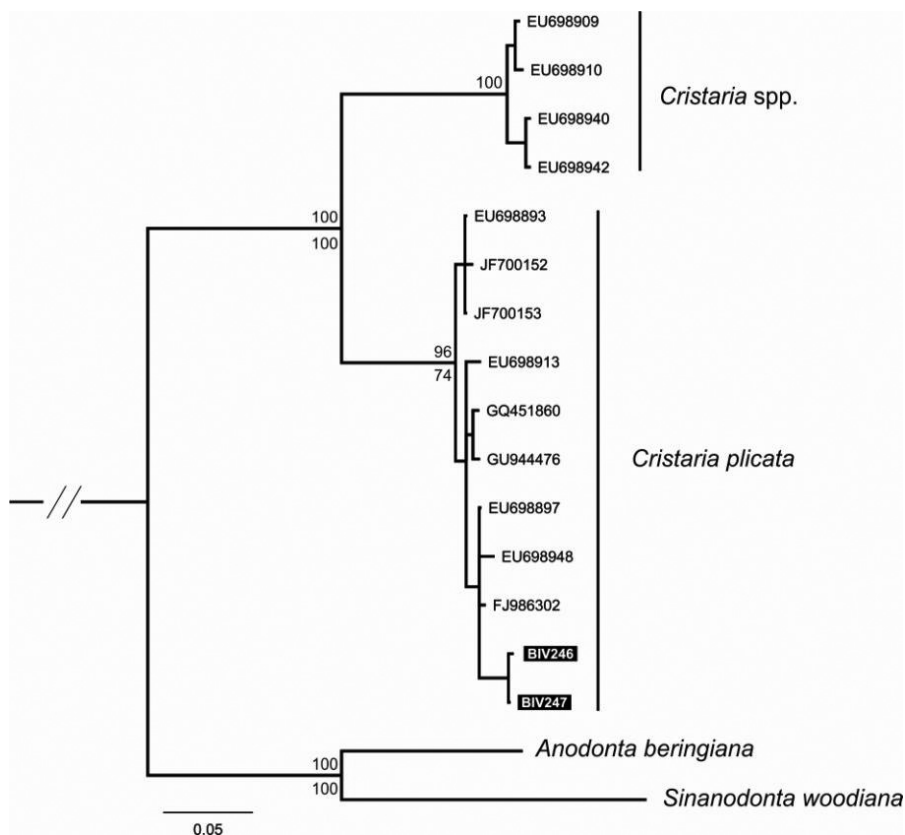


Figure 8. Phylogenetic tree obtained by Bayesian Inference and Maximum Likelihood analyses, using mtDNA fragments (CO1). Support values are given as Bayesian posterior probability above nodes and as bootstrap support below nodes, except for those within major clades, which have been omitted for clarity. Available sequences downloaded from GenBank and new sequences codes refer to Table 2.

support: one includes all the individuals from *Cristaria plicata*, including the new sequences collected for this work (Biv246 and Biv247; Fig. 8) and the other includes six individuals also originally assigned to *Cristaria plicata* (Jia and Li, Unpublished). However, it is obvious that the phylogeny of the *Cristaria* genus needs further evaluation, since these individuals are 8.9% (uncorrected p -distance) from the others, strongly indicating the existence of two different *Cristaria* species in this data set. Thus, this clade is here referred as *Cristaria* sp.

Discussion

The whole shell morphology of *C. herculea* from the Upper Amur basin described here is very similar and corresponds to that previously described by Zhadin (1938 1965) for *C. plicata*. Relative to *C. tuberculata*, Prozorova and Sayenko (2001) contend

that, although shell shape differences are considerably smoothed with age or in more dynamic habitats, there are enough conchological differences and divergence in ecological preferences to distinguish them easily using both morphological and ecological characters. On the other hand, while many early researchers gave special importance to soft body anatomical characters in freshwater bivalves for taxonomic research (e.g. Ortmann 1923; Reardon 1929; Fuller and Bereza 1975; Kat 1983; Bogan 1992), there is no published information about anatomical differences between these two species. The soft body anatomy described here for the *C. herculea* from Transbaikalia and the previously described *C. herculea* from the Far East (Khanka Lake) (Sayenko and Bogatov 2004) are similar, although the papillae of the incurent aperture of *C. herculea* from Khanka Lake (Far East) have no thickening and are located more closely in contrast to Transbaikalian ones (Sayenko and Bogatov 2004) (Fig. 5 A–C).

The study of *C. herculea* and *C. tuberculata* glochidia has also shown no differences in shell size and proportions or in the disposition of macro spines on the distal end of hooks (Sayenko 2006). Sayenko noted that the morphological indices of *C. herculea* and *C. tuberculata* glochidia, when compared with the indices of *C. plicata* from China and similar species from Japan, are within the same size and shape range limits. Under this view, the selected morphological features of glochidia, on which is based the separation of species *Cristaria herculea*, *Cristaria tuberculata*, and *Cristaria plicata* are varied and probably cannot be considered as systematic. Furthermore, no differences were revealed in the reproductive cycle timing of *Cristaria* species from Khanka Lake (Far East Russia) and Biwa Lake (Japan). In both lakes, reproduction may last from October to April (Higashi and Hayashi 1964; Chernyshev 1996; Prozorova and Sayenko 2001). In another study, based on the similarity level analyses of the electrophoretic patterns of myogens, Kodolova and Logvinenko (1988) concluded that both *C. tuberculata* and *C. herculea* belong to one single species. More recent publications by Graf (2007) and He and Zhuang (2013) based on morphological observations, also state that *C. tuberculata* and *C. herculea* represent a single species, *C. plicata*. The synonymy of *C. herculea* from the Transbaikalia with *C. plicata* is confirmed in the present study since they both fall inside the diverse *Cristaria plicata* clade. An additional clade was retrieved with sequences from the Yangtze basin (China) mussels. Although these animals were originally described as *C. plicata*, they belong to a distinct *Cristaria* sp. which may refer to either *Cristaria tenuis* (Griffith & Pidgeon, 1833) or *Cristaria radiata* Simpson, 1900, both present in the Yangtze River basin (He and Zhuang 2013). Furthermore, the newly sequenced *C. herculea* individuals collected from Transbaikalia are five mutations away from the closest Yangtze haplotype (data not shown). Thus, more individuals from the Transbaikalia, including the vast Amur basin, as well as specimens from Far East Asia (e.g. Khanka Lake) are needed to determine if they form a distinct evolutionary unit (e.g. subspecies) within *Cristaria plicata*.

In summary, the shell morphology, anatomy, and known ecological traits of *C. herculea* from the Upper Amur basin are similar to those described for *C. plicata*. Additionally, the CO1 molecular analysis confirms *C. herculea* as a synonym of *C. plicata*. As for *C. tuberculata*, while some studies reported similar morphological and molecular characters to *C. herculea*, other authors reported differences not only in shell shape

(inflation) but also in ecological requirements and morphological features of the glochidia, suggesting the occurrence of two distinct species in Far East Russia. Therefore, the distinction of *C. tuberculata* from *C. herculea*/*C. plicata* is still an open question that should be carefully investigated using additional molecular data.

Acknowledgements

We would like to thank Dr. Richard Willan and Dr. Yulia Beshpalaja for all the help in improving the scientific quality of the manuscript. The work was financially supported by the Ministry of Natural Resources and Ecology of Zabaikalsky Territory, Grant No. 20-10/P, and by the Russian Foundation for Basic Research (RFBR), Grant No. 12-04-00594a. Financial support for the genetics work was provided by Portuguese Foundation for Science and Technology (FCT) project PTDC/AAC-AMB/117688/2010.

References

- Aldridge DC, Fayle TM, Jackson N (2007) Freshwater mussel abundance predicts biodiversity in UK lowland rivers. *Aquatic Conservation: Marine and Freshwater Ecosystems* 17: 554–564. doi: 10.1002/aqc.815
- Bogan AE (1992) Anal structures as a new source of anatomical characters in freshwater bivalves (Mollusca: Bivalvia: Unionoida). Abstracts, 11th International Malacological Congress, Unita Malacologica, Siena, 14–16.
- Bogan AE (1993) Freshwater bivalve extinctions (Mollusca: Unionoida): a search for causes. *American Zoologist* 33: 599–609.
- Brandt RAM (1974) The non-marine aquatic Mollusca of Thailand. *Archiv für Molluskenkunde* 105: 1–423.
- Chernyshev AV (1996) About reproductive cycles of far-eastern Unionidae. International conference: The Problems of hydrobiology of continental waters and their malacofauna. Abstracts, St. Petersburg, 60–61. [in Russian]
- Darriba D, Taboada GL, Doallo R, Posada D (2012) jModelTest 2: more models, new heuristics and parallel computing. *Nature Methods* 9: 772–772. doi: 10.1038/nmeth.2109
- Đặng NT, Thái TB, Phạm VM (1980) Định loại động vật không xương sống nước ngọt Bắc Việt Nam. [The classification of freshwater invertebrates of North Vietnam] Nhà Xuất bản Khoa học và Kỹ thuật, Hà Nội, Viet Nam, 573 pp. [in Vietnamese]
- Froufe E, Sobral C, Teixeira A, Lopes A, Sousa R, Varandas S, Aldridge DC, Lopes-Lima M (2014) Genetic diversity of the pan-European freshwater mussel *Anodonta anatina* (Bivalvia: Unionoida) based on CO1: new insights on the genus phylogeny and implications for its conservation. *Aquatic Conservation: Marine and Freshwater Ecosystems* 24: 561–574. doi: 10.1002/aqc.2456

- Fuller SLH, Bereza DJ (1975) The value of anatomical characters in naiad taxonomy (Bivalvia: Unionacea). Bulletin of the American Malacological Union 1974: 21–22.
- Graf DL (2007) Palearctic freshwater mussel (Mollusca: Bivalvia: Unionoida) diversity and the Comparatory Method as a species concept. Proceeding of the Academy of Natural Sciences of Philadelphia 156: 71–88. doi: 10.1635/0097-3157(2007)156[71:PFMMBU]2.0.CO;2
- Gustafson RG, Iwamoto EM (2005) A DNA-based identification key to Pacific Northwest freshwater mussel glochidia: importance to salmonid and mussel conservation. Northwest Science 79: 233–245.
- Haas F (1969) Superfamilia Unionacea. Das Tierreich 88. Walter de Gruyter and Co., Berlin, 663 pp.
- Hall TA (1999) BioEdit: a user-friendly biological sequence alignment editor and analysis program for Windows 95/98/NT. Nucleic acids symposium series 41, North Carolina State University, Raleigh, North Carolina, 95–98.
- He J, Zhuang Z (2013) The freshwater bivalves of China. ConchBooks, Harxheim, Germany.
- Higashi S, Hayashi K (1964) On the larvae of freshwater bivalves in the Lake Biwa-ko. Bulletin of the Japanese Society for Scientific fisheries 30: 227–233. [in Japanese with English summary]
- Jiang WP, Li JL, Zheng RL, Wang GL (2010) Analysis of complete mitochondrial genome of *Cristaria plicata*. Yi Chuan 32: 153–162. doi: 10.3724/SP.J.1005.2010.00153
- Kat PW (1983) Morphological divergence, genetics, and speciation among *Lampsilis* (Bivalvia: Unionidae). Journal of Molluscan Studies 49: 133–145.
- Klishko OK (2012) Mollusca. Part 6. Red Book of the Zabaikalsky Territory, Animals. Novosibirsky Publishing House, Novosibirsk, 207–238. [in Russian]
- Kodolova OP, Logvinenko BM (1988) Disputable issues in the taxonomy of Amur-Khanka mollusks of the genus *Cristaria* (Bivalvia, Unionidae). Zoologicheskii Zhurnal 67: 506–510. [in Russian]
- Kondo T (2008) Monograph of Unionoida in Japan (Mollusca: Bivalvia). Special Publication of the Malacological Society of Japan No. 3. Malacological Society of Japan, Tokyo, Japan.
- Lee JH, Choi EH, Kim SK, Ryu SH, Hwang UW (2012) Mitochondrial genome of the cockcomb pearl mussel *Cristaria plicata* (Bivalvia, Unionoida, Unionidae). Mitochondrial DNA 23: 39–41. doi: 10.3109/19401736.2011.643882
- Moskvicheva IM (1973) Molluscs of subfamily Anodontinae (Bivalvia, Unionidae) of Amur basin and Primorye Territory. Zoologicheskii Zhurnal 52: 822–834. [in Russian]
- Ortmann AE (1923) The anatomy and taxonomy of certain Unioninae and Anodontinae from the Gulf Drainage. Nautilus 36: 73–84, 129–132.
- Prozorova LA, Sayenko EM (2001) To the biology of the anodontine genus *Cristaria* (Bivalvia, Unionidae). Ruthenica (Russian Malacological Journal) 11: 33–36. [in Russian]
- Rambaut A, Drummond AJ (2007) Tracer v1.4. <http://beast.bio.ed.ac.uk/Tracer>
- Reardon L (1929) A contribution to our knowledge of the anatomy of the freshwater mussels of the District of Columbia. Proceedings of the United States National Museum 75: 1–12. doi: 10.5479/si.00963801.75-2782.1
- Ronquist F, Huelsenbeck JP (2003) MrBayes 3: Bayesian phylogenetic inference under mixed models. Bioinformatics 19: 1572–1574. doi: 10.1093/bioinformatics/btg180

- Sambrook J, Fritsch EF, Maniatis T (1989) Molecular cloning: a laboratory manual. Cold Spring Harbour Press, New York.
- Sayenko EM (2006) Morphology of glochidia (Bivalvia: Unionidae: Anodontinae, Pseudoanodontinae). Vladivostok, Dalnauka, 72 pp. doi: 10.1093/bioinformatics/btl446 [in Russian]
- Sayenko EM, Bogatov VV (2004) Soft parts morphology of the anodontine bivalves from Russian Far East. The Bulletin of the Russian Far East Malacological Society 8: 17–25. [in Russian]
- Sayenko EM, Pearce TA, Shea EK (2005) Glochidial morphology of selected species of the genera *Cristaria* Schumacher, 1817 and *Sinanodonta* Modell, 1945 (Bivalvia: Unionidae) from far Eastern Russia. American Malacological Bulletin 20: 11–21.
- Simpson CT (1914) A Descriptive Catalogue of the Naiades, or Pearly Fresh-water Mussels. Parts I–III. Bryant Walker, Detroit, Michigan.
- Stamatakis A (2006) RAxML-VI-HPC: Maximum likelihood-based phylogenetic analyses with thousands of taxa and mixed models. Bioinformatics 22: 2688–2690.
- Starobogatov YI, Bogatov VV, Prozorova LA, Sayenko EM, Chlebovich VV, Chernyshev AV (2004) Key to Freshwater Invertebrates of Russia and Adjacent Lands. Vol. 6. Molluscs, Polychaetes, Nemerteans. Nauka, St. Petersburg, 528 pp. [in Russian]
- Tamura K, Stecher G, Peterson D, Filipski A, Kumar S (2013) MEGA6: Molecular Evolutionary Genetics Analysis Version 6.0. Molecular biology and evolution 30: 2725–2729. doi: 10.1093/molbev/mst197
- Vaughn CC, Hakenkamp CC (2001) The functional role of burrowing bivalves in freshwater ecosystems. Freshwater Biology 46: 1431–1446. doi: 10.1046/j.1365-2427.2001.00771.x
- Walker JM, Curole JP, Wade DE, Chapman EG, Bogan AE, Watters GT, Hoeh WR (2006) Taxonomic distribution and phylogenetic utility of gender-associated mitochondrial genomes in the Unionoida (Bivalvia). Malacologia 48: 265–282.
- Walker JM, Bogan AE, Bonfiglio EA, Campbell DC, Christian AD, Curole JP, Harris JL, Wojtecki RJ, Hoeh WR (2007) Primers for amplifying the hypervariable, male-transmitted COII-COI junction region in amblemine freshwater mussels (Bivalvia: Unionoidea: Ambleminae). Molecular Ecology Notes 7: 489–491. doi: 10.1111/j.1471-8286.2006.01630.x
- Zatravkin MN, Bogatov VV (1987) Large bivalve molluscs of the fresh and brackish waters of the USSR Far East. Vladivostok, USSR, 152 pp. [in Russian]
- Zhadin VI (1938) Family Unionidae. Fauna of USSR. Mollusca, Vol. 4. Moscow-Leningrad, USSR. [in Russian]
- Zhadin VI (1965) Mollusks of Fresh and Brackish Waters of the USSR. Israel Program for Scientific Translations, Jerusalem. [English translation of Zhadin (1952) by A. Mecado]