

A new species of the genus *Ambrostoma* Motschulsky (Coleoptera, Chrysomelidae, Chrysomelinae) from South Korea, with larval descriptions and biological notes

Hee-Wook Cho^{1,†}, Lech Borowiec^{1,‡}

¹ Department of Biodiversity and Evolutionary Taxonomy, University of Wrocław, Przybyszewskiego 63/77, 51-148 Wrocław, Poland

[†] <http://zoobank.org/DF052953-2111-458E-B5AB-D25231EE5367>

[‡] <http://zoobank.org/92D2640B-48F9-4497-8E44-9AC77BB141C7>

Corresponding author: Hee-Wook Cho (lampides@gmail.com)

Academic editor: A. Konstantinov | Received 5 March 2013 | Accepted 26 July 2013 | Published 2 August 2013

<http://zoobank.org/8A961088-6B0D-40B5-97FD-1A50AA177FCF>

Citation: Cho H-W, Borowiec L (2013) A new species of the genus *Ambrostoma* Motschulsky (Coleoptera, Chrysomelidae, Chrysomelinae) from South Korea, with larval descriptions and biological notes. ZooKeys 321: 1–13. doi: 10.3897/zookeys.321.4972

Abstract

Ambrostoma koreana sp. n. is described from South Korea. Detailed descriptions and illustrations of adult and all larval instars are provided and differences to closely related species are discussed. Oviviparity is reported for the first time in the genus *Ambrostoma*. Notes on distribution, host plant and biology are also provided.

Keywords

Chrysomelidae, *Ambrostoma*, new species, larva, biology, ovoviviparity, Korea

Introduction

The genus *Ambrostoma* was described by Motschulsky (1860) for three species from Russia (Amur region), China and Nepal, respectively, with *A. quadriimpressum* (Motschulsky, 1845) [= *A. superbum* (Thunberg, 1787)] as its type species. Since then, nine species have been described in East Asia and the Himalayas (Achard 1922, Chen 1934, 1936, Gressitt and Kimoto 1963, Wang 1992, Kimoto and Osawa 1995, Medvedev 2007). Chen (1936) divided the genus into two subgenera, *Ambrostoma* and *Parambrostoma*, based on elytral punctures, setae on elytral epipleura and length ratio of antennomeres, and later Wang and Chen (1981) raised these subgenera to the generic status. These two genera were recently revised to include fifteen species and the monophyly of both genera was well supported by morphological characters of adults (Ge et al. 2012). *Ambrostoma* is widely distributed in East Asia and comprises eight species. Members of the genus are characterized by a distinct transverse depression near the base of elytra, inner margin of elytral epipleura with setae along an entire length, procoxal cavities open posteriorly, metasternal process immarginate apically and tarsal claws simple. The larva are only known and for only one species of the genus: *A. superbum* which is a major pest in China, has been described by Medvedev and Voronova (1976). *Ambrostoma* larva is easily recognized among the subfamily Chrysomelinae by their orange stripes in live specimens, undeveloped tubercles, a dark pattern on the dorsum and black markings on the head and pronotum.

In 2006, the first author collected unusual *Ambrostoma* specimens, adults and larvae, on Namhaedo Island in South Korea. After a detailed examination we concluded that they belong to a new species described below. We compared the larval morphology of *Ambrostoma* to those of *Parambrostoma*. Notes on distribution, host plant, biology and occurrence of ovoviviparity are also provided.

Material and methods

The type specimens were deposited in the Department of Biodiversity and Evolutionary Taxonomy, University of Wrocław, Poland (DBET) and H.-W. Cho's private collection, Republic of Korea (HWC). Biological observations were made in April–May 2006, at the type locality and under laboratory conditions. Adults and larvae collected from the type locality were kept in plastic containers (10 cm diameter, 12 cm deep) with leaves of host plant and checked daily. All larval specimens used in the study were preserved in 70% ethanol. For morphological studies of minute structures, some larvae were dissected, cleared in 10% sodium hydroxide solution, rinsed in distilled water, and then mounted on slides with Swan's liquid (20 g distilled water, 15 g gum arabic, 60 g chlorhydrate, 3 g glucose, and 2 g glacial acetic acid). Genitalia were dissected from adult specimens softened in plastic containers with wet tissue paper for 12–24 hours. The aedeagus was softened in 10% sodium hydroxide solution for 6–12 hours and placed in distilled water. The careful insertion of a sharp-pointed thick nose hair

and injection of 5% ethanol into the foramen of aedeagus were repeated until the internal sac was fully everted. After washing with absolute ethanol, the genitalia were preserved in a microvial with glycerin and pinned with the specimen. Descriptions and illustrations were prepared using Nikon SMZ800 and Nikon Eclipse E600 microscopes, each equipped with a drawing tube. Habitus images were taken by a Nikon Coolpix 4500 digital camera attached to a Nikon SMZ1500 microscope. The letters L, S and M in parentheses signify long, short, and micro setae, respectively.

Results

Ambrostoma koreana Cho & Borowiec, sp. n.

<http://zoobank.org/4FEAAE6E-87B0-4AFA-B40F-3DAADB68CF75>

http://species-id.net/wiki/Ambrostoma_koreana

Figs 1–20

Type locality. South Korea: Gyeongnam Province, Namhaedo Island, Mangunsan Mountain, 34°51'52"N, 127°51'47"E.

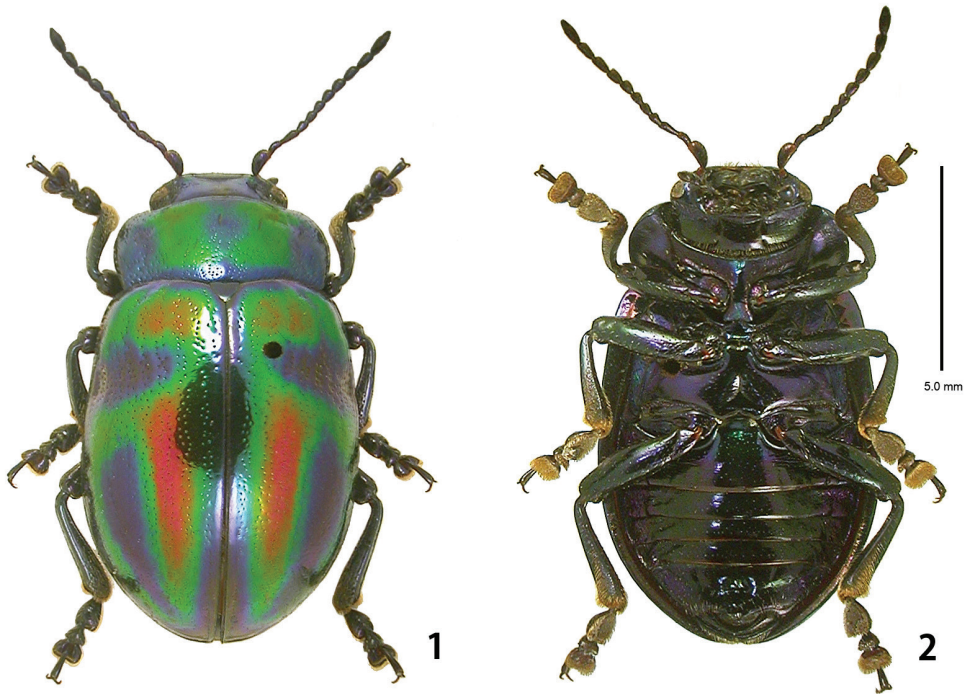
Type material. Holotype: male (DBET), KOREA: Gyeongnam Province, Namhaedo Island, Mangunsan Mountain, 34°51'52"N, 127°51'47"E 280 m, 7.IV.2006, H.-W. Cho. Paratypes: 2 males and 6 females (DBET), same data as holotype; 10 males and 10 females (HWC), same data as holotype except for 13.VI.2007, H.-Y. Kwon; 1 male (HWC), KOREA: Gyeongnam Province, Miryang, Gajisan Mountain, 35°35'46"N, 128°59'38"E 500 m, 17.VIII.2001, T.-H. Ahn; 1 female (HWC), same data as preceding paratype except for 25.V.2001, G.-S. Jung.

Other material. 42 larvae collected or obtained from adults, same data as holotype except for 23.IV.–15.V.2006.

Adult (Figs 1–7, 19).

Diagnosis. The new species is very similar in coloration to *A. leigongshana* Wang, but can be distinguished by the following characters: antennomere 3 much longer than 4 (equal in length in *A. leigongshana*); pronotum with moderately dense punctures in lateral depression (dense and coarse punctures in *A. leigongshana*); aedeagus widest at apical 1/5, thence narrowed with trapezoidal apex (elongate apically with rounded apex in *A. leigongshana*); spermatheca almost straight, curved at apex (strongly curved in *A. leigongshana*).

Description. Holotype (Figs 1–2). Body length 11.7 mm, width 5.7 mm, strongly convex dorsally. Head emerald green to ultramarine with 2 pairs of small orange yellow markings on central part. Mouthparts midnight blue. Antennomeres 1–7 ultramarine, 8–11 black. Pronotum emerald green to ultramarine with a pair of large orange yellow markings. Scutellum ultramarine. Elytra ultramarine with a pair of orange yellow markings at base and 2 pairs of orange yellow longitudinal markings on central-posterior part, all markings surrounded by emerald green. Venter mainly ultramarine with greenish luster. Legs midnight blue.



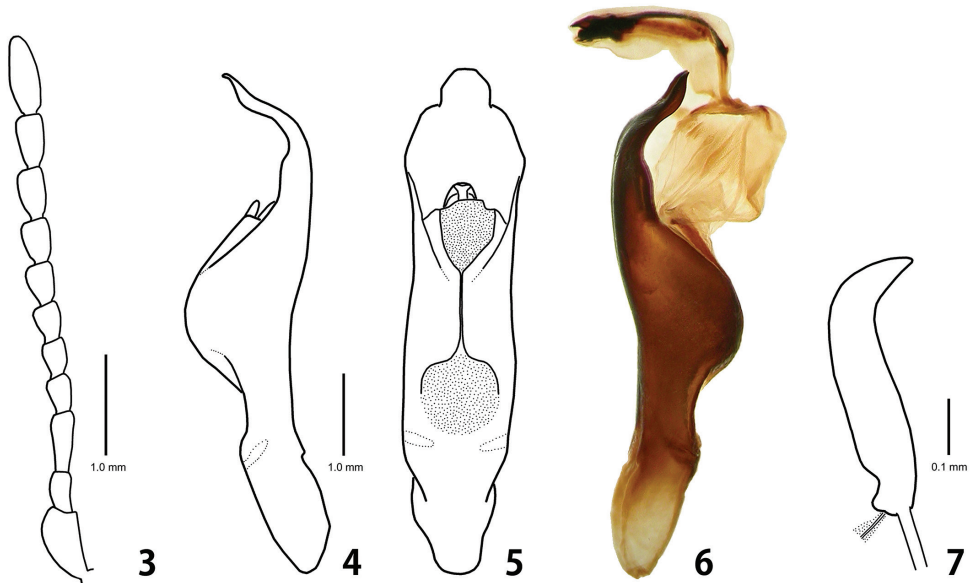
Figures 1–2. Habitus of *Ambrostoma koreana* sp. n., holotype. **1** dorsal view **2** ventral view.

Head. Width 3.4 mm, interocular distance 2.5 mm. Vertex and frons with sparse and small punctures. Clypeus and labrum with small punctures bearing long setae. Mandibles with moderately dense punctures bearing setae on outer surface. Maxillary palp 4-segmented with apical palpomere distinctly widened and truncate. Antennae (Fig. 3) reaching elytral humeri; antennomere 1 robust, longer than 3; antennomere 2 as long as 4; antennomere 3 distinctly longer than 4; antennomeres 5–10 moderately widened; antennomere 11 longest and 2.6 times as long as wide.

Pronotum. Length 2.7 mm, width 5.4 mm. Lateral sides roundly widened anteriorly, widest at anterior 1/4. Anterior margin widely emarginated. Trichobothria on anterior and posterior angles. Disc with dense and small punctures, larger than those of head; hardly confluent large punctures in lateral longitudinal depression; interspaces with sparse and minute punctures. Scutellum subtriangular, slightly wider than long, impunctate.

Elytra. Length 8.8 mm, width 6.8 mm. Sides moderately widened posteriorly and widest at posterior 2/5, thence rounded at apex. Disc with double irregular rows of punctures; transverse depression with large punctures, subequal to those of side of pronotum; interspaces with sparse and minute punctures. Epipleuron flat, inner margin with micro setae along an entire length. Hind wing well developed.

Venter. Hypomera impunctate; prosternum with sparse and small punctures; prosternal process strongly enlarged and slightly emarginated apically. Abdominal sternites wrinkled laterally with sparse and small punctures; last abdominal sternite deeply emar-



Figures 3–7. Adult of *Ambrostoma koreana* sp. n. **3** antenna **4** aedeagus lateral view **5** aedeagus dorsal view **6** aedeagus with everted internal sac lateral view **7** spermatheca.

ginated on both sides. Legs moderately robust; tibiae simple without preapical tooth; fore and middle legs with tarsomere 1 slightly narrower than 3; tarsal claws simple.

Aedeagus. Strongly convex at middle, curved and sinuated at apex in lateral view (Fig. 4); subparallel-sided, widest at apical 1/5, thence narrowed with trapezoidal apex, with 2 weakly sclerotized plates in dorsal view (Fig. 5); internal sac curved, shorter than median lobe with thick and long flagellum (Fig. 6).

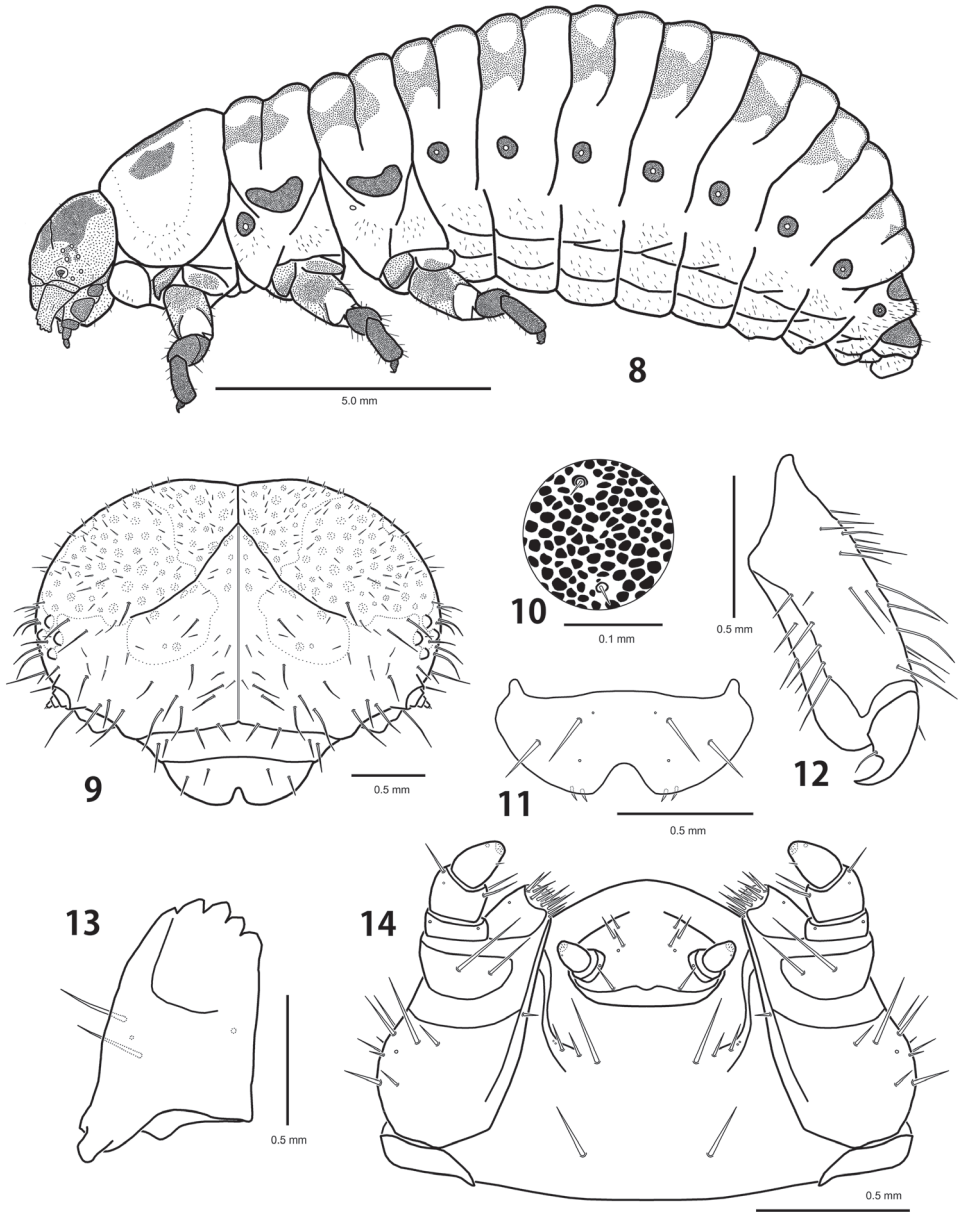
Paratypes. Body length 10.9–12.7 mm, width 5.2–6.2 mm. Coloration similar to holotype. Female: larger than male; tarsomere 1 of fore and middle legs distinctly narrower than 3; last abdominal sternite rounded; spermatheca (Fig. 7) almost straight, curved at apex.

First instar larva (Figs 15, 17).

Description. Body length 2.7–4.2 mm, width 1.2–1.7 mm, head width 0.90–0.95 mm ($n = 5$). Body convex dorsally on abdomen. Pale yellow with head dark brown, tubercles and legs brown (Fig. 17). Tubercles weakly developed (Fig. 15). Sclerotized platelets on dorsum dense and strong, on venter almost absent. Setae longer than in other instars, bases of setae sclerotized.

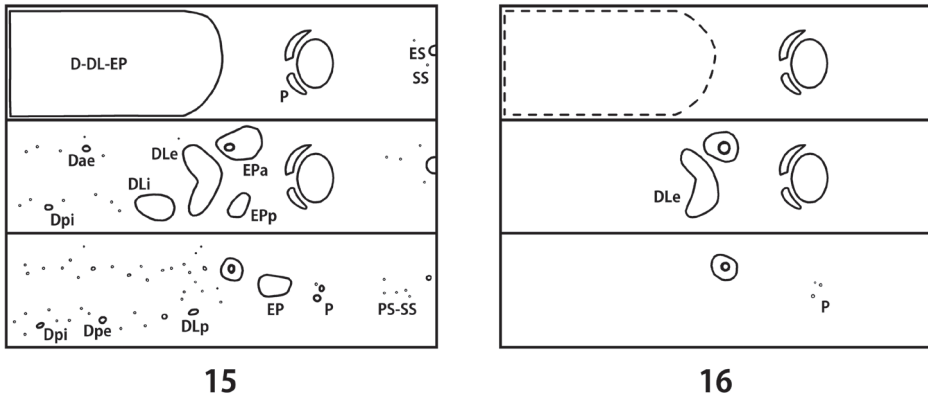
Head. Vertex and temporal side with 30–32 pairs of long setae and 15–19 pairs of short setae. Frons with 16–19 pairs of long setae. Clypeus and labrum, each with 2 pairs of long setae. Mouthparts similar in shape and chaetotaxy to those of the last instar larva, except for stipes with 3 setae and postmentum with 3 pairs of setae.

Thorax. Prothorax with D-DL-EP (53–57L 4–6S); P (1L); ES (1L) weakly sclerotized; SS represented by a short seta; sternal region with 1–2 additional setae. Meso-



Figures 8–14. Last instar larva of *Ambrostoma koreana* sp. n. **8** habitus **9** head **10** sclerotized platelets on dorsal mesothorax **11** labrum **12** tibia and tarsungulus **13** mandible **14** lower mouthparts.

and metathorax with Dae (1L); Dpi (1L); dorsal region with 11–13 additional short setae; DLi (1–3L) well developed with egg burster; DLe (4–5L 8–11S); EPa (4–5L 5S) fused with spiracle; EPp (2L 3–4S); P (1L); ES (1L) weakly sclerotized; SS represented by a short seta; sternal region with 2–3 additional setae.



Figures 15–16. Schematic presentation of tubercular patterns (top: prothorax, middle: mesothorax, bottom: 2nd abdominal segment). **15** first instar larva **16** last instar larva.

Abdomen. Dorsal and dorsolateral regions with 31–35 short setae; Dpi (1L); Dpe (1L); DLp (1L); EP (9–10L 8–10S); P (3S) divided; PS-SS represented by 4–5 short setae; ES (1S); segment 8 with D-DL (3–4L 11–12S) fused; segment 9 with D-DL-EP (3L 11–12S) fused; segment 10 with pygopod developed; egg burster on segment 1 much smaller than thoracic ones.

Second instar larva.

Description. Similar to the last instar larva except for following characters: body length 4.2–5.7 mm, width 1.8–2.4 mm, head width 1.25–1.35 mm ($n = 4$); black markings on head and dark patterns on dorsum much larger than those of the last instar larva; pronotum with black markings partly connected.

Third instar larva.

Description. Similar to the last instar larva except for following characters: body length 7.2–8.1 mm, width 2.8–3.8 mm, head width 1.90–2.05 mm ($n = 3$); dark patterns on dorsum much larger than those of the last instar larva.

Fourth (last) instar larva (Figs 8–14, 16, 18).

Diagnosis. The last instar larva is easily distinguished from larva of *A. superbum* (Thunberg) in the following characters: pronotum with 3 black markings (2 black markings in *A. superbum*); dorsolateral posterior region of each abdominal segment without dark patterns (with dark patterns in *A. superbum*); width of peritreme less than half width of abdominal segment (equal to half width in *A. superbum*).

Description. Body length 11.6–12.8 mm, width 4.7–5.3 mm, head width 2.60–2.65 mm ($n = 5$). Body strongly convex dorsally on abdomen (Fig. 8). Yellowish white in alcohol specimens, creamy white with orange stripes in live specimens (Fig. 18). Head yellowish brown with a pair of large black markings. Pronotum with 3 black markings. Tubercles, spiracles and legs dark brown. Dorsum with dark patterns consisting of dense and strong sclerotized platelets, sparsely covered with micro setae (Fig. 10). Tubercles undeveloped (Fig. 16). Venter covered with short and moderately long setae, bases of setae not sclerotized.



Figures 17–18. Larvae of *Ambrostoma koreana* sp. n. on leaves of *Zelkova serrata*. **17** first instar larva **18** last instar larva.

Head. Hypognathous, rounded, well sclerotized, covered with dark spots (Fig. 9). Vertex and temporal side with 10–11 pairs of long setae and 77–82 pairs of short setae. Epicranial suture Y-shaped; coronal suture distinct along an entire length;



Figure 19. Overwintered adults of *Ambrostoma koreana* sp. n.

frontal suture indistinct for lateral 2/5. Frons slightly depressed medially with 14–15 pairs of long setae and 17–22 pairs of short setae. Endocarina distinct; epistomal suture developed. Six stemmata on each side. Antenna 3-segmented; antennomere 1 without seta; antennomere 2 with a sensory papilla and 4 setae; antennomere 3 with 5 setae. Clypeus trapezoid with 2 pairs of setae. Labrum (Fig. 11) deeply emarginate anteriorly with 2 pairs of setae; epipharynx with 2 pairs of setae. Mandibles (Fig. 13) symmetrical, 5-toothed with 2 setae. Maxillary palp (Fig. 14) 3-segmented; palpomere 1 without seta; palpomere 2 with 3 setae; palpomere 3 conical with a seta; palpiger with 2 setae; mala with 13–14 setae; stipes with 10–13 setae; cardo without seta. Labial palp 2-segmented; prementum with 4–5 pairs of setae; postmentum with 4 pairs of setae.

Thorax. Prothorax with D-DL-EP scattered with micro setae, not sclerotized; P (6–7S); ES and SS, each represented by a short seta; sternal region with 14–16 additional setae. Meso- and metathorax with DLe (27–30M); P (8–10S); EPa and EPp, each represented by 23–27 short setae; ES and SS, each represented by a long seta; sternal region with 20–35 additional setae; mesothoracic spiracle annuliform with large peritreme; metathoracic spiracle vestigial. Legs rather stout; tibia with 28–30 setae; tarsungulus strongly curved; basal tooth weakly developed with a seta (Fig. 12).

Abdomen. Tubercles absent on segments 1–7 except for P represented by 3–4 short setae arising from sclerotized bases; epipleural to sternal regions with a lot of short setae. Segment 8 with D-DL (10–12S); segment 9 with D-DL-EP (12–14L 1–2M); segment 10 with pygopod well developed; spiracle with large peritreme similar to mesothoracic one, but smaller; eversible glands absent.

Etymology. This endemic species is named after the type locality, Korea.

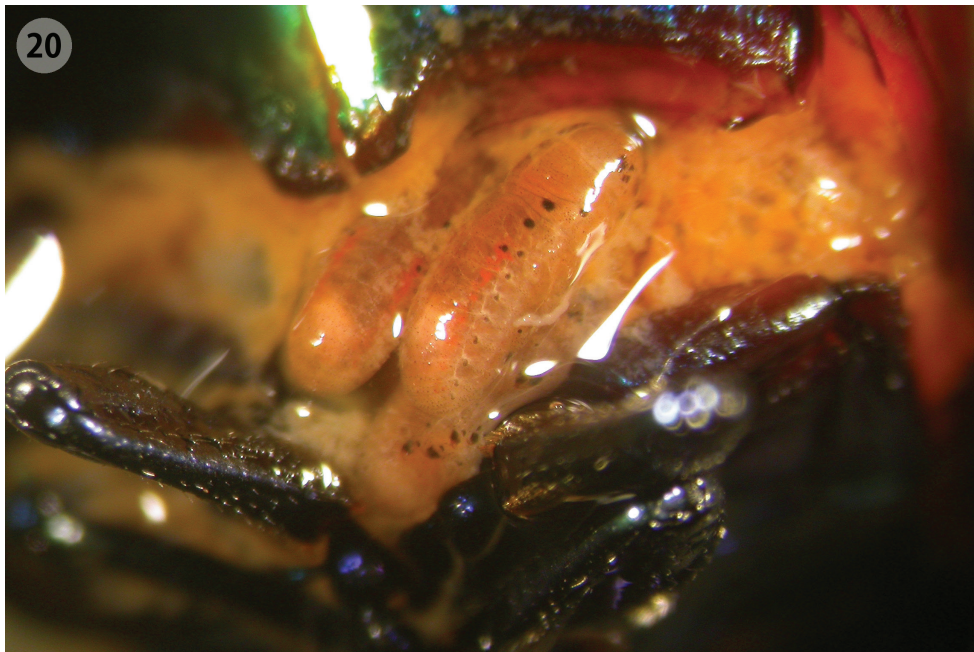


Figure 20. Larvae inside the abdomen of female of *Ambrostoma koreana* sp. n.

Distribution. Specimens were collected in the southeastern part of the Korean Peninsula and on adjacent Namhaedo Island.

Biological notes. Overwintered adults were observed under bark or in fallen leaves near the base of trees in early April (Fig. 19). Adults and larvae fed on leaves of *Zelkova serrata* Makino (Ulmaceae) which is quite a common tree in Korea. *Ulmus pumila* Linnaeus (also Ulmaceae) was the only known host plant for three other *Ambrostoma* species (Yu et al. 1996). On 7 May 2006, a female laid 4 eggs that contained fully developed embryos in the laboratory. Four females were dissected shortly afterward, and 17–79 enclosed larvae were found in abdomen (Fig. 20). About 50 ovoviviparous species are actually known in 7 genera of Chrysomelinae (Bontems 1988, Bontems and Lee 2008). Ovoviviparity is reported for the first time in the genus *Ambrostoma*.

Key to the adults of *Ambrostoma* species (modified from Ge et al. 2012)

- | | | |
|---|--|--------------------------------|
| 1 | Punctures of transverse impression of elytra subequal to those of the lateral sides of pronotum..... | 2 |
| – | Punctures of transverse impression of elytra much finer than those of sides of pronotum..... | 3 |
| 2 | Elytra with 3 broad transverse bands of purplish copper-red..... | |
| | | <i>A. rugosopunctatum</i> Chen |

- Elytra with 1 transverse and 4 longitudinal bands of orange yellow.....***A. koreana* sp. n.**
- 3 Elytra with large well-defined post-median violaceous patch surrounded by green.....**4**
- Elytra without well-defined post-median violaceous patch surrounded by green.....**5**
- 4 Arrangement of elytral punctures almost entirely irregular; last abdominal sternite of male deeply emarginate on both sides.....***A. fulgurans* (Achard)**
- Elytral punctures arranged in simple rows at base before transverse impression, slightly irregular beyond impression; last abdominal sternite moderately sinuate on both sides.....***A. fasciatum* Chen**
- 5 Pronotum slightly dilated in front of middle region; interspaces between elytral striae finely and densely punctuate.....***A. superbum* (Thunberg)**
- Pronotum strongly dilated in front of middle region; interspaces between elytral striae finely and very sparsely punctuate**6**
- 6 Elytra with single striae..... ***A. chinkinyui* Kimoto & Osawa**
- Elytra with double striae**7**
- 7 Pronotum with dense and coarse punctures in lateral depression**8**
- Pronotum with sparse punctures in lateral depression***A. omeishanum* Gressitt & Kimoto**
- 8 Elytra with longitudinal purple markings on media posterior surrounded by green; last abdominal segment in male shallowly sinuate.....***A. leigongshanum* Wang**
- Elytra with 4 purple longitudinal stripes on media posterior part; last abdominal segment in male deeply sinuate ***A. fortunei* (Baly)**

Discussion

The *Ambrostoma* species has not been recorded in Korea since Chen (1936) mentioned *A. superbum* without any locality data and comments. *Ambrostoma superbum* is widely distributed in Southeastern Siberia, Eastern Mongolia, Northeastern China and probably North Korea (Kippenberg 2010, under name *A. quadriimpressum quadriimpressum*), whereas *A. koreana* is restricted to Namhaedo Island and Miryang, Gyeongnam Province, South Korea. The first instar larva of *Ambrostoma* was described for the first time. The second and third instar larvae are very similar in shape and coloration to the last instar larva, but the first instar larva distinctly differs in having more developed tubercles and long setae. The tubercular pattern of the first instar larva was similar to some larvae of the genus *Chrysolina* Motschulsky. Based on body shape, tubercular pattern and biology, *Ambrostoma* larva belongs to the generic group *Chrysolina* proposed by Kimoto (1962). The larva of *Parambrostma mahesa* (Hope) also belongs to the generic group *Chrysolina* (Takizawa 1989). The monophyly of both genera, *Ambrostoma* and *Parambrostoma* carried out by Ge et al. (2012), was supported by larval characters.

The mature larvae of these two genera are similar in having undeveloped dorsal tubercles, sclerotized platelets and sparse micro setae on dorsum. However, the considerable differences can be summarized as follows: dark patterns present on dorsum in *Ambrostoma* and absent in *Parambrostoma*; head and pronotum are pale coloured with black markings in *Ambrostoma* and entirely black in *Parambrostoma*; prothoracic and ventral tubercles are not sclerotized in *Ambrostoma*, whereas they are well sclerotized in *Parambrostoma*; basal tooth of tarsungulus in *Ambrostoma* is weakly developed while in *Parambrostoma* it is strongly developed.

Acknowledgements

We are very grateful to Mauro Daccordi (Museo Civico di Storia Naturale, Italy) for many helpful comments. We also thank Hua Yi (Chinese Academy of Sciences, China) for providing the picture of larva of *A. superbum*. This work was supported by scientific grant of the Zoological Institute, University of Wrocław, 2021/M/KBTE/12.

References

- Achard J (1922) Descriptions de nouveaux Chrysomelini (Col. Chrysomelidae). Fragments Entomologiques 1–2: 13–28.
- Bontems C (1988) Localization of spermatozoa inside viviparous and oviparous females of Chrysomelinae. In: Jolivet P, Petitpierre E, Hsiao T (Eds) Biology of Chrysomelidae. Kluwer Academic Publishers, Dordrecht, 299–316. doi: 10.1007/978-94-009-3105-3_18
- Bontems C, Lee CF (2008) A new case of viviparity among Chrysomelinae. In: Jolivet P, Santiago-Baly J, Schmitt M (Eds) Research on Chrysomelidae, Vol 1. Brill, Leiden-Boston, 260–264.
- Chen SH (1934) On some species of Chrysomelidae (Col.) in the British Museum. Stylops 3: 66–78.
- Chen SH (1936) The chrysomelid genus *Ambrostoma* Motsch. Sinensia 7 (6): 713–729.
- Ge SQ, Daccordi M, Beutel RG, Ren J, Cui JZ, Li WZ, Yang XK (2012) Revision of the Eastern Asian genera *Ambrostoma* Motschulsky and *Parambrostoma* Chen (Coleoptera: Chrysomelidae: Chrysomelinae). Systematic Entomology 37: 332–345. doi: 10.1111/j.1365-3113.2012.00618.x
- Gressitt JL, Kimoto S (1963) The Chrysomelidae (Coleopt.) of China and Korea, Part 2. Pacific Insect Monograph 1B: 301–1026.
- Kimoto S (1962) A phylogenetic consideration of Chrysomelinae based on immature stages of Japanese species (Coleoptera). Journal of the Faculty of Agriculture, Kyushu University 12 (2): 67–88.
- Kimoto S, Osawa S (1995) Description of a new species of the genus *Ambrostoma* Motschulsky from Taiwan, China (Coleoptera, Chrysomelidae, Chrysomelinae). Entomological Review of Japan 50: 15–16.

- Kippenberg H (2010) Subfamily Chrysomelinae. In: Löbl I, Smetana A (Eds) Catalogue of Palaearctic Coleoptera, Vol. 6 Chrysomeloidea. Apollo Books, Stenstrup, 390–443.
- Medvedev LN (2007) New taxa of Oriental Chrysomelidae (Coleoptera). Euroasian Entomological Journal 6: 433–438.
- Medvedev LN, Voronova NV (1976) A description of the larva of *Ambrostoma* (Chrysomelidae) and the distribution of the genus *Ambrostoma* in Mongolia. In: Kerzhner IM (Ed) Insects of Mongolia, Issue 4. Nauka, Leningrad, 237–240.
- Motschulsky V (1860) Coléoptères de la Sibérie orientale et en particulier des rives de l'Amour. In: Schrenck L von: Reisen und Forschungen im Amur-Lande in den Jahren 1854–1856. Vol. 2, part 2. L. v. Schrenk, St. Petersburg, 77–258, plates VI–XI.
- Takizawa H (1989) Notes on larvae of the subfamily Chrysomelinae (Coleoptera, Chrysomelidae), part 1. Kanagawa-chuho 90: 243–256.
- Wang SY (1992) Two new species of leaf beetles from Wuling mountain of China (Coleoptera: Chrysomelidae). Sinozoologia 9: 175–178.
- Wang SY, Chen SC (1981) Coleoptera: Chrysomelidae: Chrysomelinae. In: Huang FS (Ed) Insects of Xizang, Vol. 1. Science Press, Beijing, 509–516.
- Yu PY, Wang SY, Yang XK (1996) Economic Insect Fauna of China, Fasc. 54, Coleoptera: Chrysomeloidea (II). Science Press, Beijing, 324 pp.