

Fig. 1. Ichthyophiidae 12S and 16S neighbor-joining tree.

# Supplementary Files: Mulcahy et al., Filling the BINs of Life



# Supplementary Files: Mulcahy et al., Filling the BINs of Life

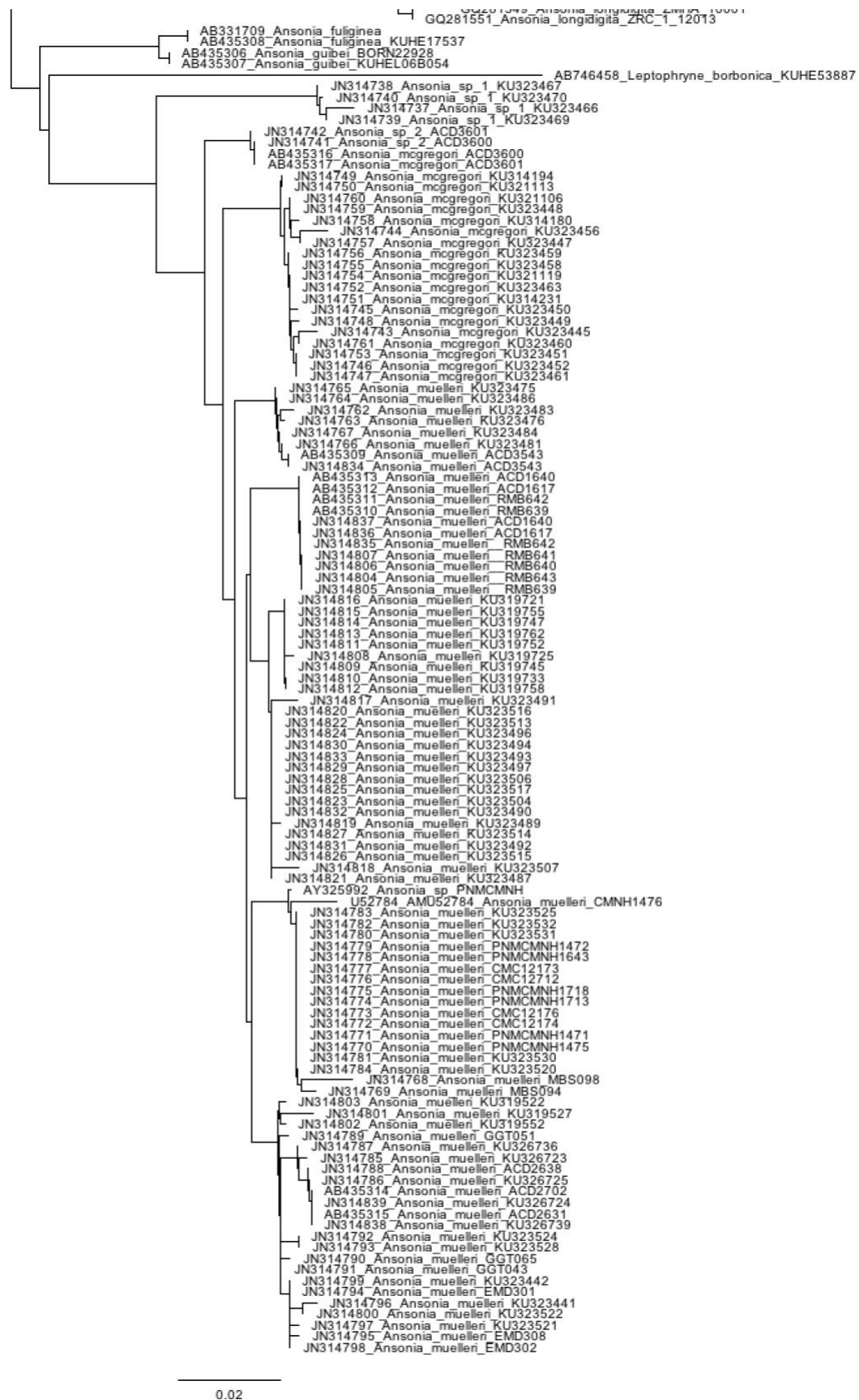
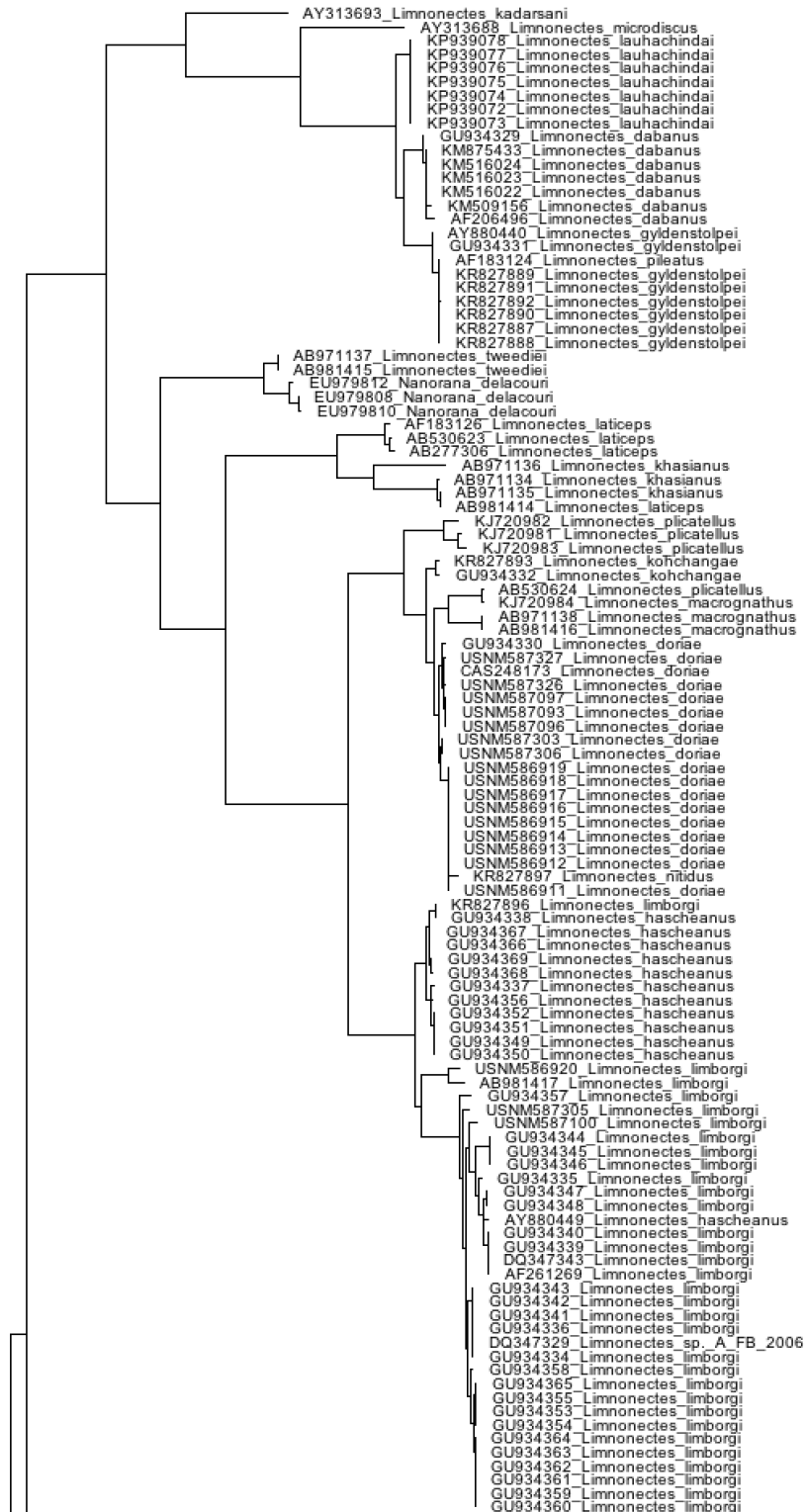


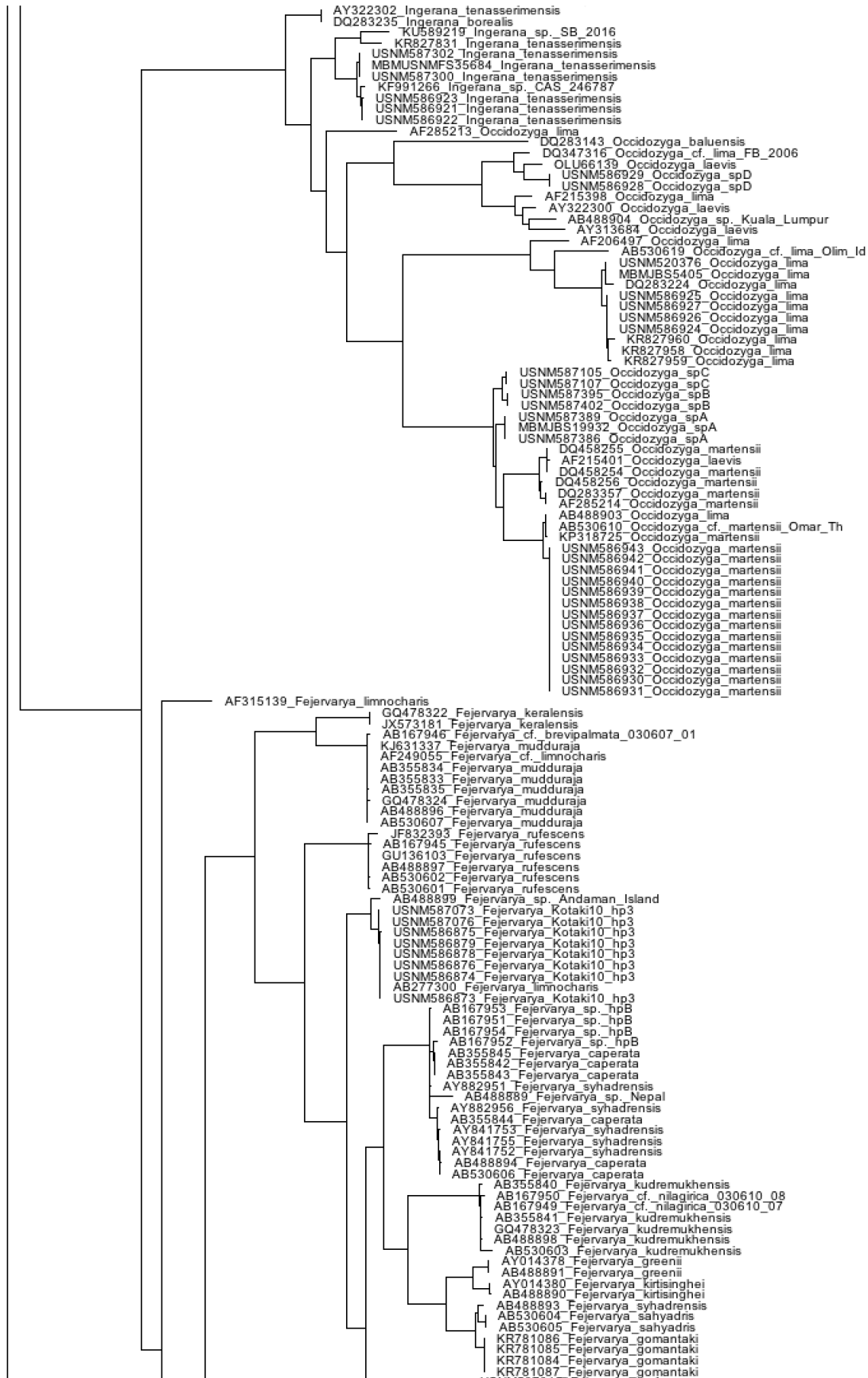
Fig. 2. Bufonidae 16S neighbor-joining tree.

# Supplementary Files: Mulcahy et al., Filling the BINs of Life



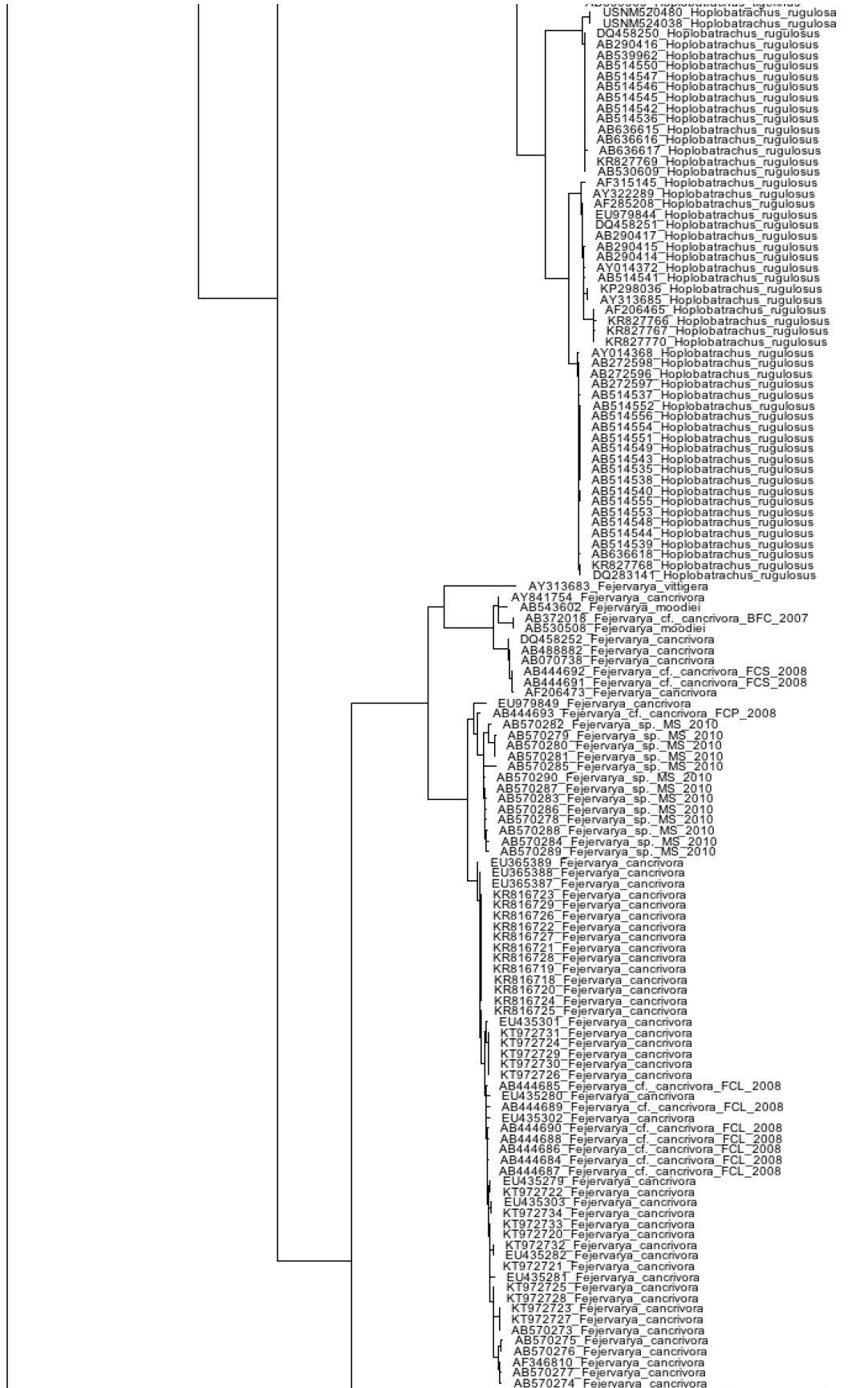


# Supplementary Files: Mulcahy et al., Filling the BINs of Life



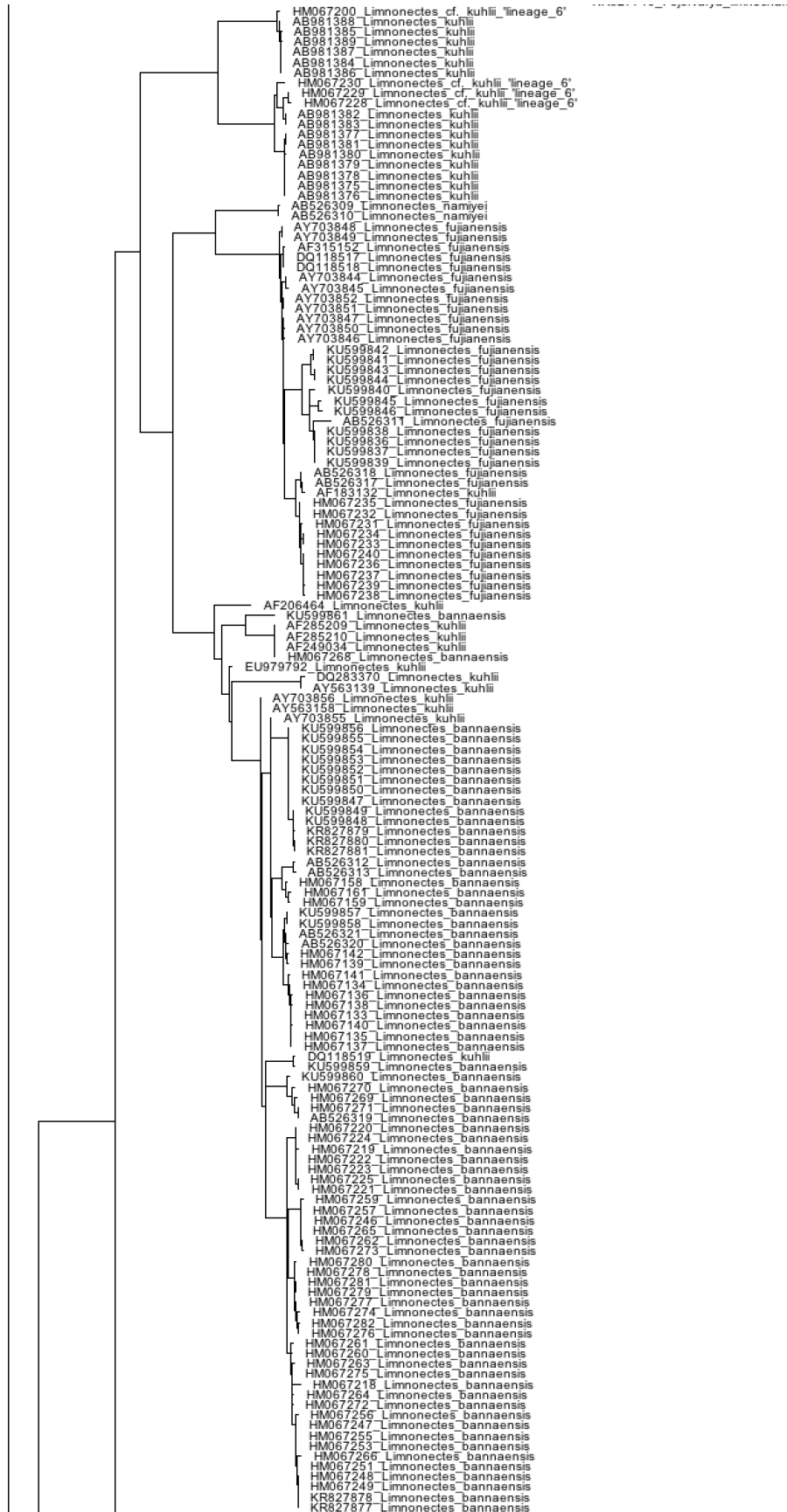
USNM587315 Fejervarya\_spA  
USNM520437 Fejervarya\_spA  
USNM520417 Fejervarya\_spA  
USNM520406 Fejervarya\_spA  
AF206466 Fejervarya limncharis  
KP849815 Fejervarya assam  
KU589220 Fejervarya sp. SB 2016  
AB488900 Fejervarya sp. Assam  
KP849819 Fejervarya sp. MSAH 2015  
KP849818 Fejervarya sp. MSAH 2015  
AB372011 Fejervarya sp. BFM 2007  
KP849817 Fejervarya sp. MSAH 2015  
AB530511 Fejervarya sp. BFM 2007  
AB167947 Fejervarya sp. hpa  
AF249040 Fejervarya cf. limncharis  
AB355839 Fejervarya granosa  
AB355837 Fejervarya granosa  
AB355836 Fejervarya granosa  
AB167948 Fejervarya sp. hpa  
KR995134 Fejervarya granosa  
AB355838 Fejervarya granosa  
AY141843 Fejervarya syhadrensis  
AB162446 Fejervarya limncharis  
KP849816 Fejervarya pierrei  
AY882955 Fejervarya syhadrensis  
AY882954 Fejervarya syhadrensis  
AY882952 Fejervarya syhadrensis  
AB372016 Fejervarya sp. BFS 2007  
AB372017 Fejervarya sp. BFS 2007  
AY882949 Fejervarya syhadrensis  
AY841747 Fejervarya syhadrensis  
AY882948 Fejervarya syhadrensis  
AY882950 Fejervarya syhadrensis  
AY882953 Fejervarya syhadrensis  
AB372014 Fejervarya sp. BFS 2007  
AB372015 Fejervarya sp. BFS 2007  
AY841749 Fejervarya syhadrensis  
AB372013 Fejervarya sp. BFS 2007  
AY841748 Fejervarya syhadrensis  
AB372012 Fejervarya sp. BFS 2007  
AY841756 Fejervarya syhadrensis  
AY841751 Fejervarya syhadrensis  
GQ478321 Fejervarya granosa  
AB488892 Fejervarya syhadrensis  
AB488895 Fejervarya granosa  
AB488888 Fejervarya pierrei  
AY841750 Fejervarya syhadrensis  
AB530509 Fejervarya sp. BFS 2007  
AB530510 Fejervarya sp. BFS 2007  
AF215395 Nannophrys mamorata  
AF215394 Nannophrys ceylonensis  
AY141844 Nannophrys mamorata  
GQ204729 Nannophrys ceylonensis  
AF249047 Nannophrys ceylonensis  
AY948731 Nannophrys ceylonensis  
AY880442 Sphaerotheca breviceps  
AF215417 Sphaerotheca breviceps  
USNM524020 Sphaerotheca breviceps  
USNM537466 Sphaerotheca breviceps  
DQ283100 Sphaerotheca breviceps  
GU191121 Fejervarya limncharis  
GU191122 Sphaerotheca rolandae  
AF215418 Sphaerotheca dobsonii  
AF249042 Sphaerotheca dobsonii  
AB277305 Sphaerotheca dobsonii  
AB530608 Sphaerotheca dobsonii  
AY014374 Hoplobatrachus occipitalis  
EU979846 Hoplobatrachus occipitalis  
AY014373 Hoplobatrachus occipitalis  
KF991268 Hoplobatrachus occipitalis  
DQ347291 Hoplobatrachus occipitalis  
EU979845 Hoplobatrachus occipitalis  
GQ183571 Hoplobatrachus occipitalis  
AB272600 Hoplobatrachus occipitalis  
AB272599 Hoplobatrachus occipitalis  
DQ283059 Hoplobatrachus occipitalis  
AF261263 Hoplobatrachus occipitalis  
AF249044 Hoplobatrachus crassus  
AY014375 Hoplobatrachus crassus  
AY014369 Hoplobatrachus crassus  
AB290413 Hoplobatrachus crassus  
AB671184 Hoplobatrachus crassus  
AB272595 Hoplobatrachus crassus  
AB530503 Hoplobatrachus crassus  
AB543601 Hoplobatrachus crassus  
USNM587325 Hoplobatrachus littoralis  
MBUSNM533607 Hoplobatrachus littoralis  
USNM587404 Hoplobatrachus littoralis  
AB671181 Hoplobatrachus cf. tigrinus MS 2011  
AB671180 Hoplobatrachus cf. tigrinus MS 2011  
AB671179 Hoplobatrachus cf. tigrinus MS 2011  
AB671178 Hoplobatrachus cf. tigrinus MS 2011  
AB671177 Hoplobatrachus cf. tigrinus MS 2011  
AB671175 Hoplobatrachus cf. tigrinus MS 2011  
AB671174 Hoplobatrachus cf. tigrinus MS 2011  
AB671176 Hoplobatrachus cf. tigrinus MS 2011  
AB671173 Hoplobatrachus cf. tigrinus MS 2011  
AB530501 Hoplobatrachus cf. tigrinus MS 2009  
AB530502 Hoplobatrachus cf. tigrinus MS 2009  
AB543600 Hoplobatrachus cf. tigrinus MS 2009  
FJ008057 Hoplobatrachus tigrinus  
AY014370 Hoplobatrachus tigrinus  
AB167943 Hoplobatrachus tigrinus  
AB488902 Hoplobatrachus tigrinus  
AY014371 Hoplobatrachus tigrinus  
AB167944 Hoplobatrachus tigrinus  
KU179090 Hoplobatrachus tigrinus  
KU179088 Hoplobatrachus tigrinus  
AB290412 Hoplobatrachus tigrinus  
KU179089 Hoplobatrachus tigrinus  
AB272594 Hoplobatrachus tigrinus  
KU179092 Hoplobatrachus tigrinus  
KU179091 Hoplobatrachus tigrinus  
AB530600 Hoplobatrachus tigrinus  
AB671183 Hoplobatrachus tigrinus  
AB671182 Hoplobatrachus tigrinus  
AB272592 Hoplobatrachus tigrinus  
AB272590 Hoplobatrachus tigrinus  
AB272585 Hoplobatrachus tigrinus  
AB272587 Hoplobatrachus tigrinus  
AB272588 Hoplobatrachus tigrinus  
AB272591 Hoplobatrachus tigrinus  
AB272593 Hoplobatrachus tigrinus  
AB272589 Hoplobatrachus tigrinus  
AB272583 Hoplobatrachus tigrinus  
AB272584 Hoplobatrachus tigrinus  
AB272586 Hoplobatrachus tigrinus  
AB636621 Hoplobatrachus tigrinus x Hoplobatrachus rugulosus  
AB636623 Hoplobatrachus tigrinus x Hoplobatrachus rugulosus  
AB636622 Hoplobatrachus tigrinus x Hoplobatrachus rugulosus  
AB636620 Hoplobatrachus tigrinus  
AB636619 Hoplobatrachus tigrinus  
AB530500 Hoplobatrachus tigrinus

Supplementary Files: Mulcahy et al., Filling the BINs of Life

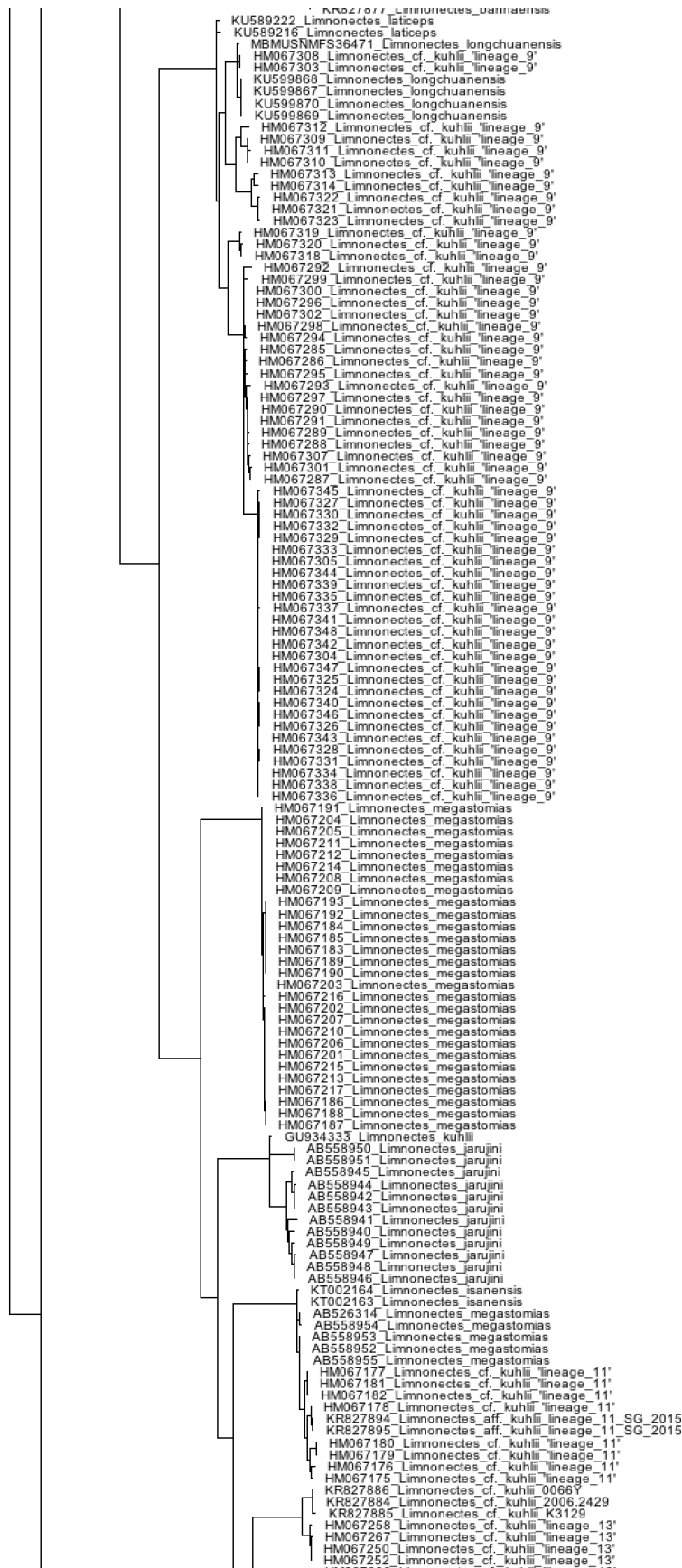


[illegible]

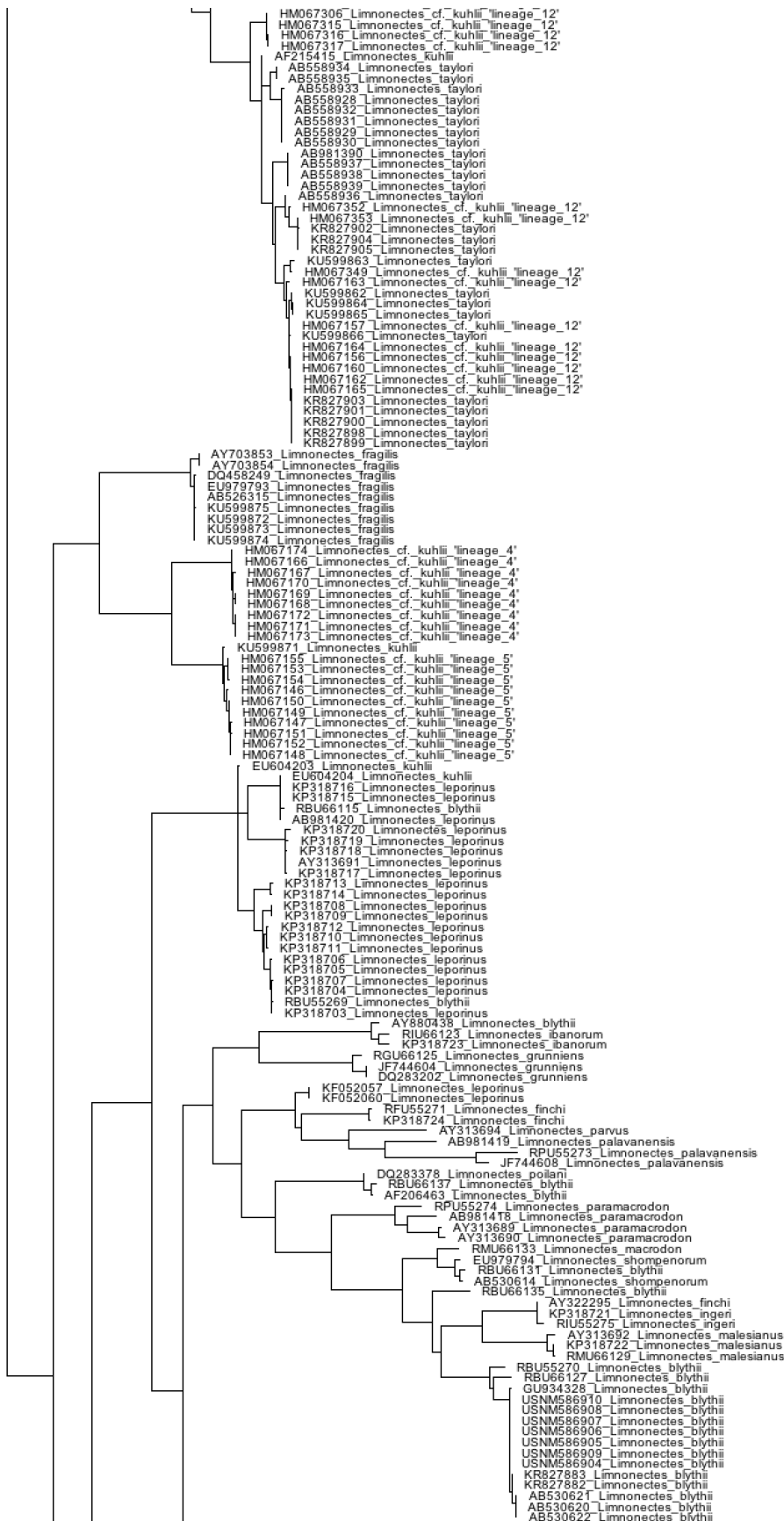
# Supplementary Files: Mulcahy et al., Filling the BINs of Life



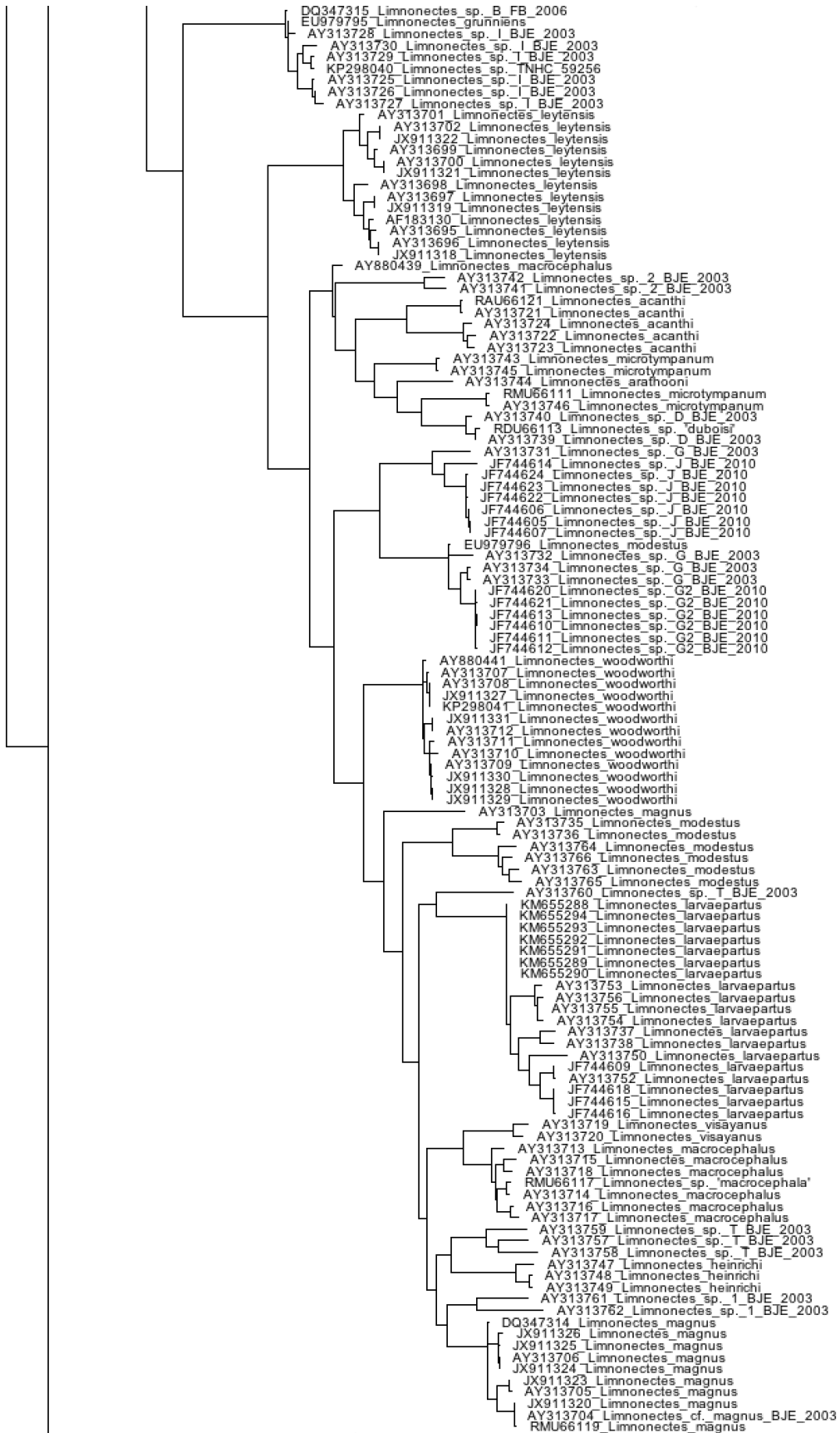
# Supplementary Files: Mulcahy et al., Filling the BINs of Life



# Supplementary Files: Mulcahy et al., Filling the BINs of Life



Supplementary Files: Mulcahy et al., Filling the BINs of Life





# Supplementary Files: Mulcahy et al., Filling the BINs of Life



## Supplementary Files: Mulcahy et al., Filling the BINs of Life



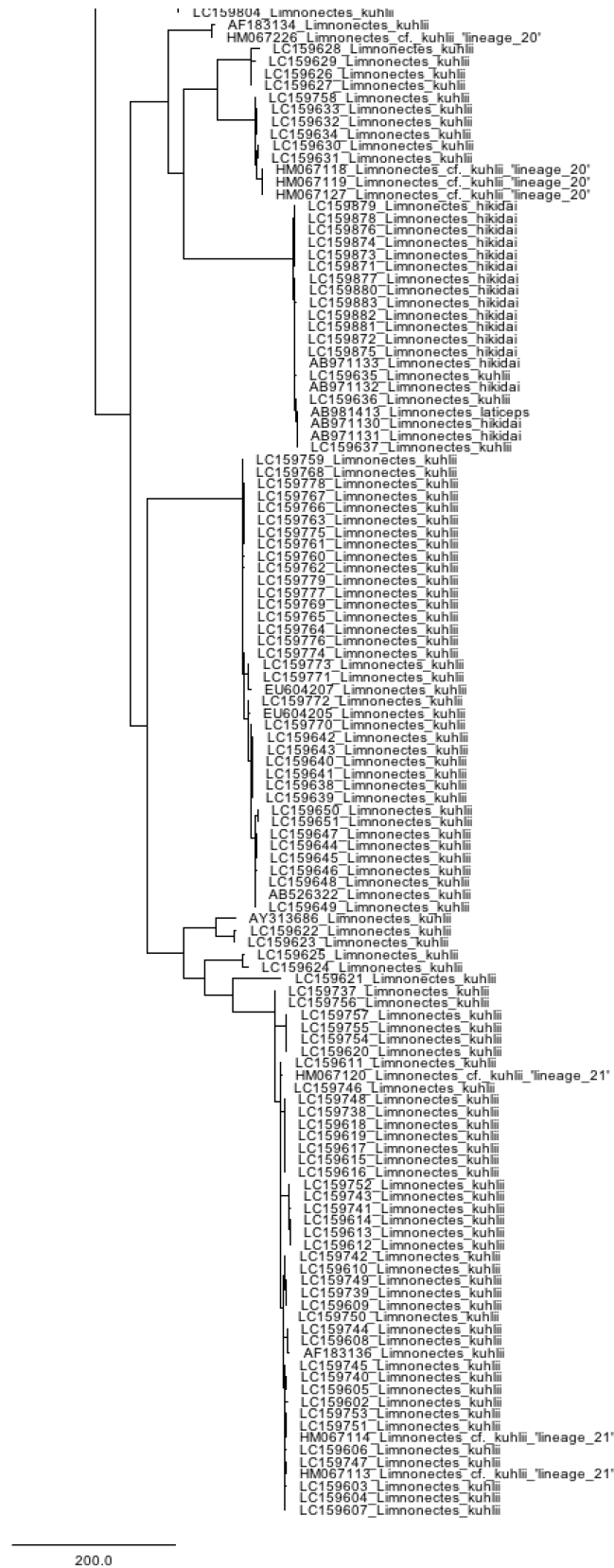
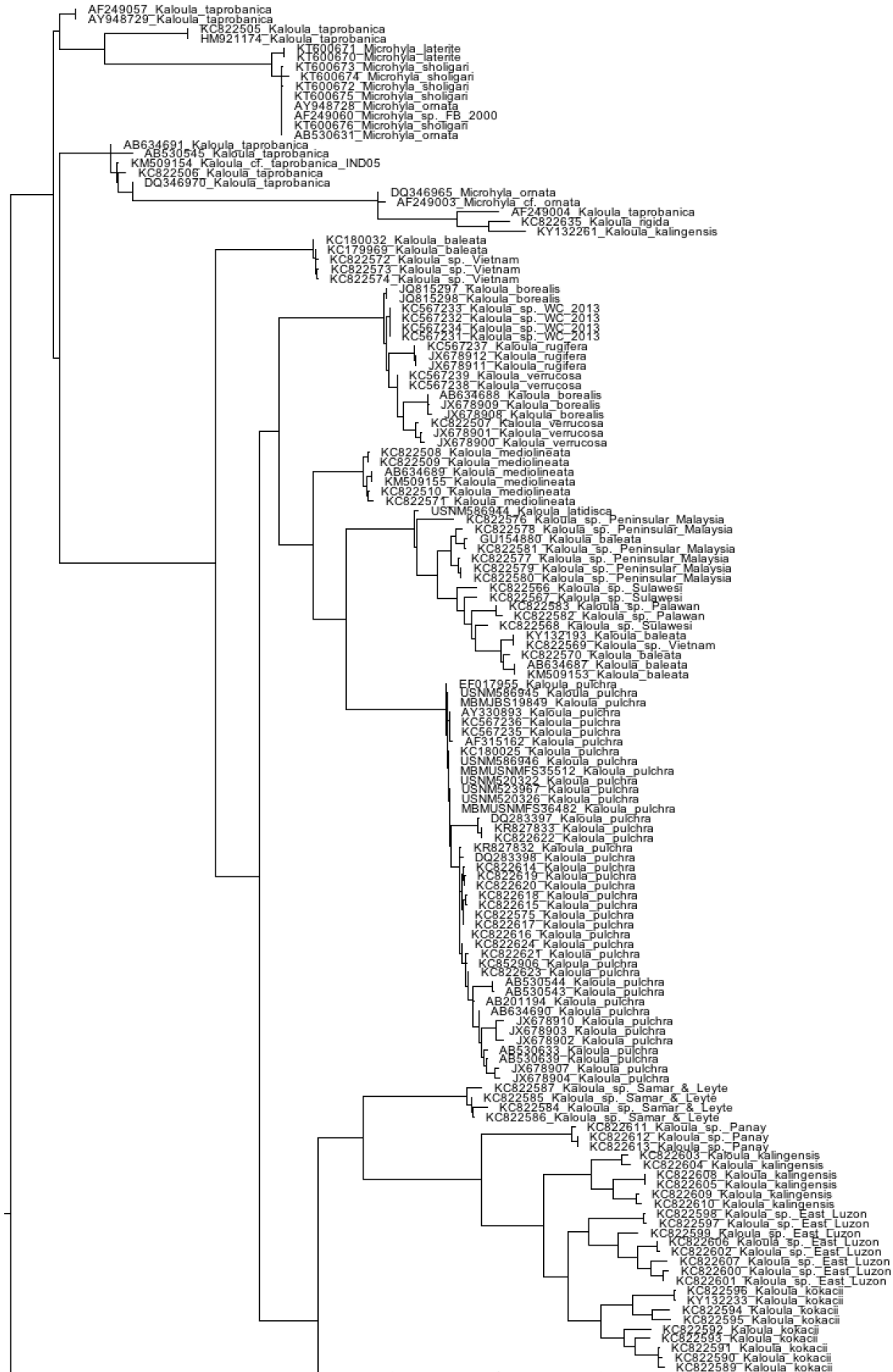
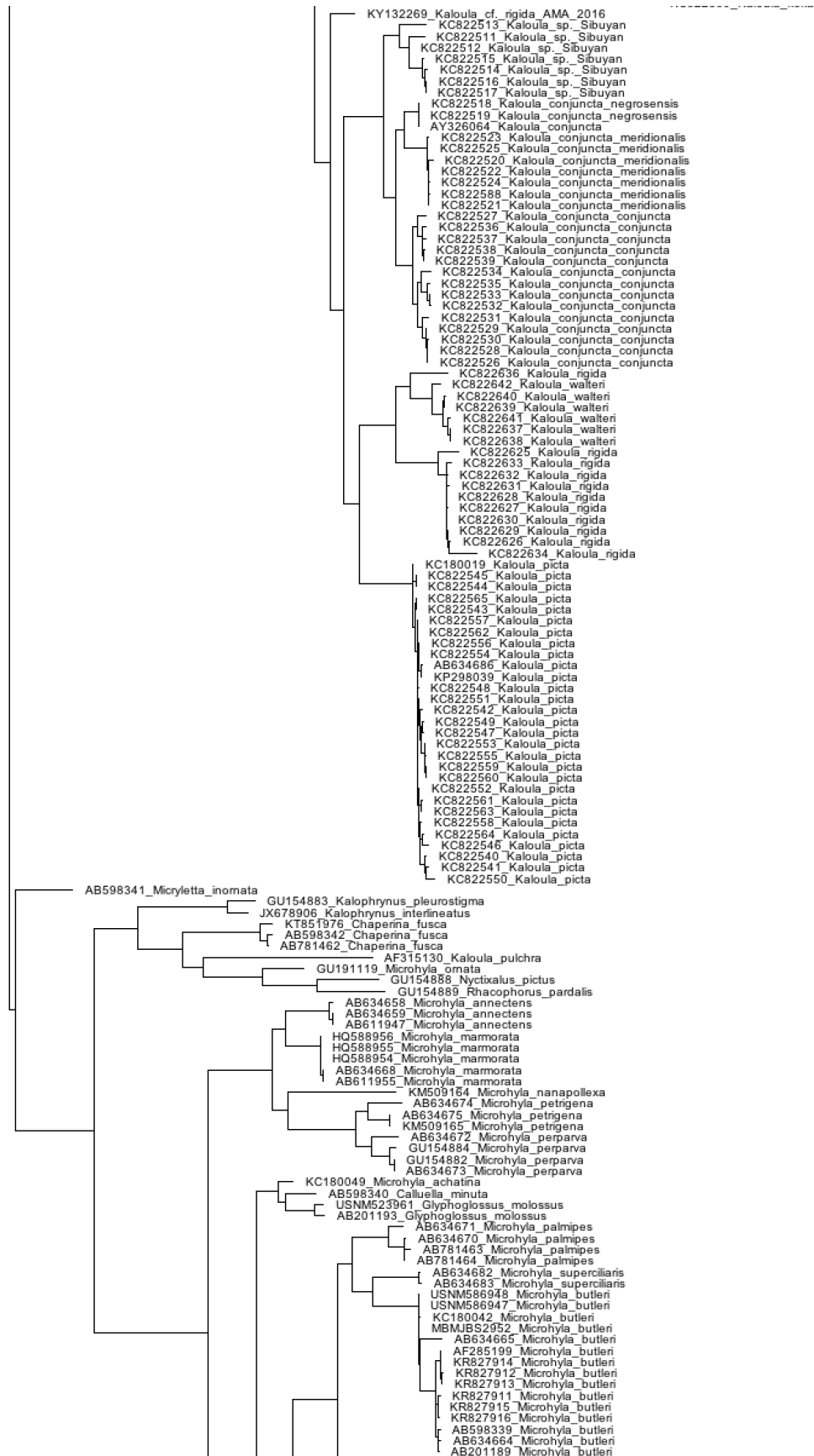


Fig. 3. Dicroglossidae 16S neighbor-joining tree.

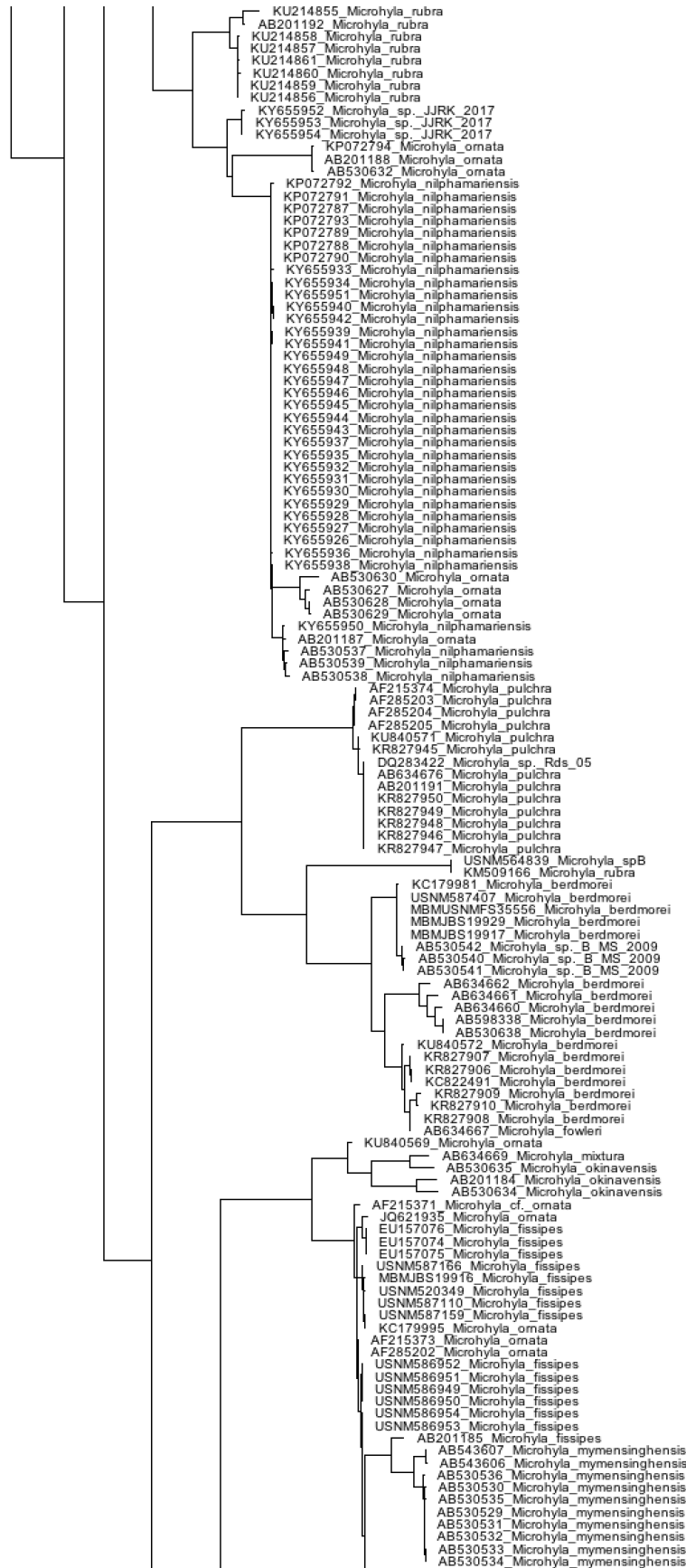
# Supplementary Files: Mulcahy et al., Filling the BINs of Life



# Supplementary Files: Mulcahy et al., Filling the BINs of Life



# Supplementary Files: Mulcahy et al., Filling the BINs of Life



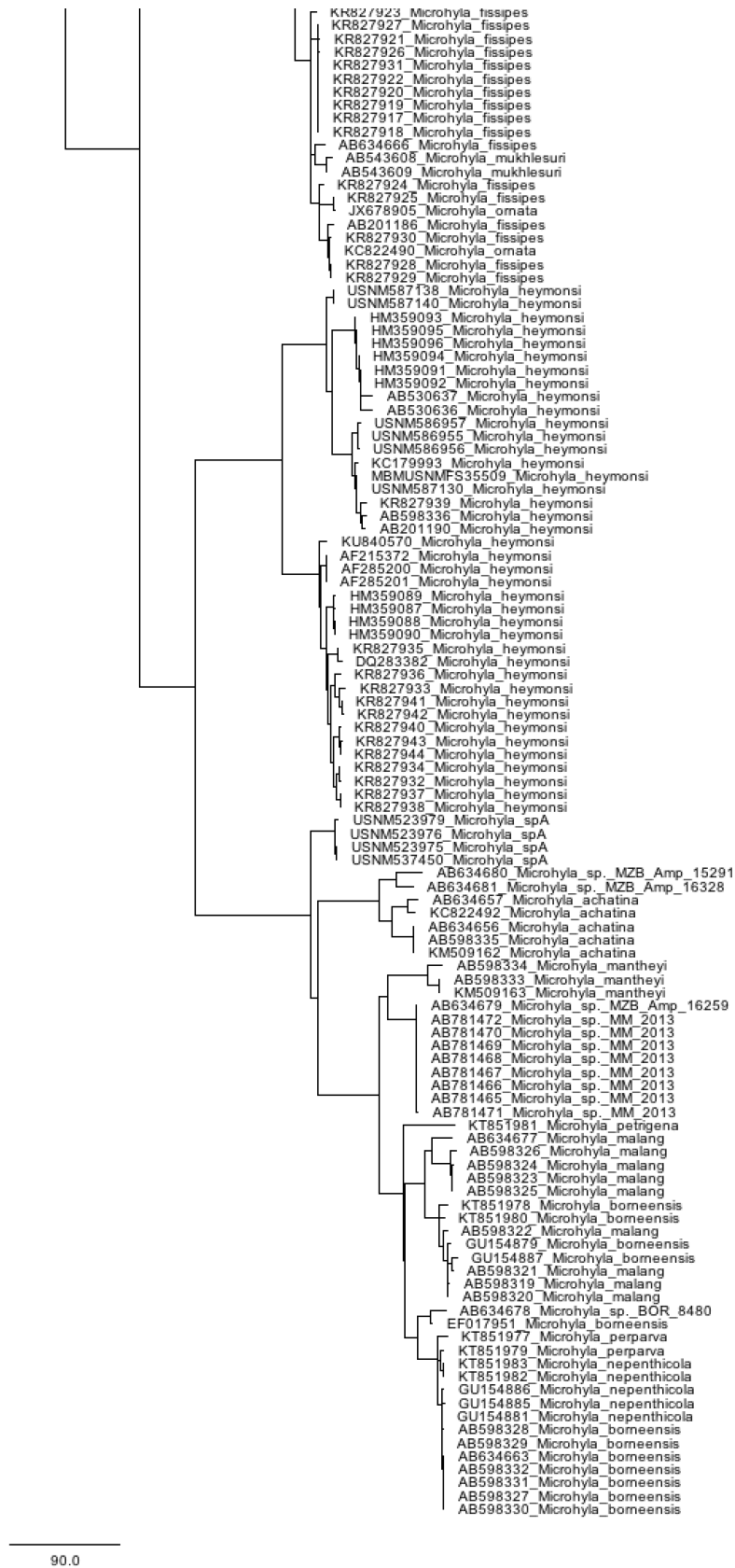


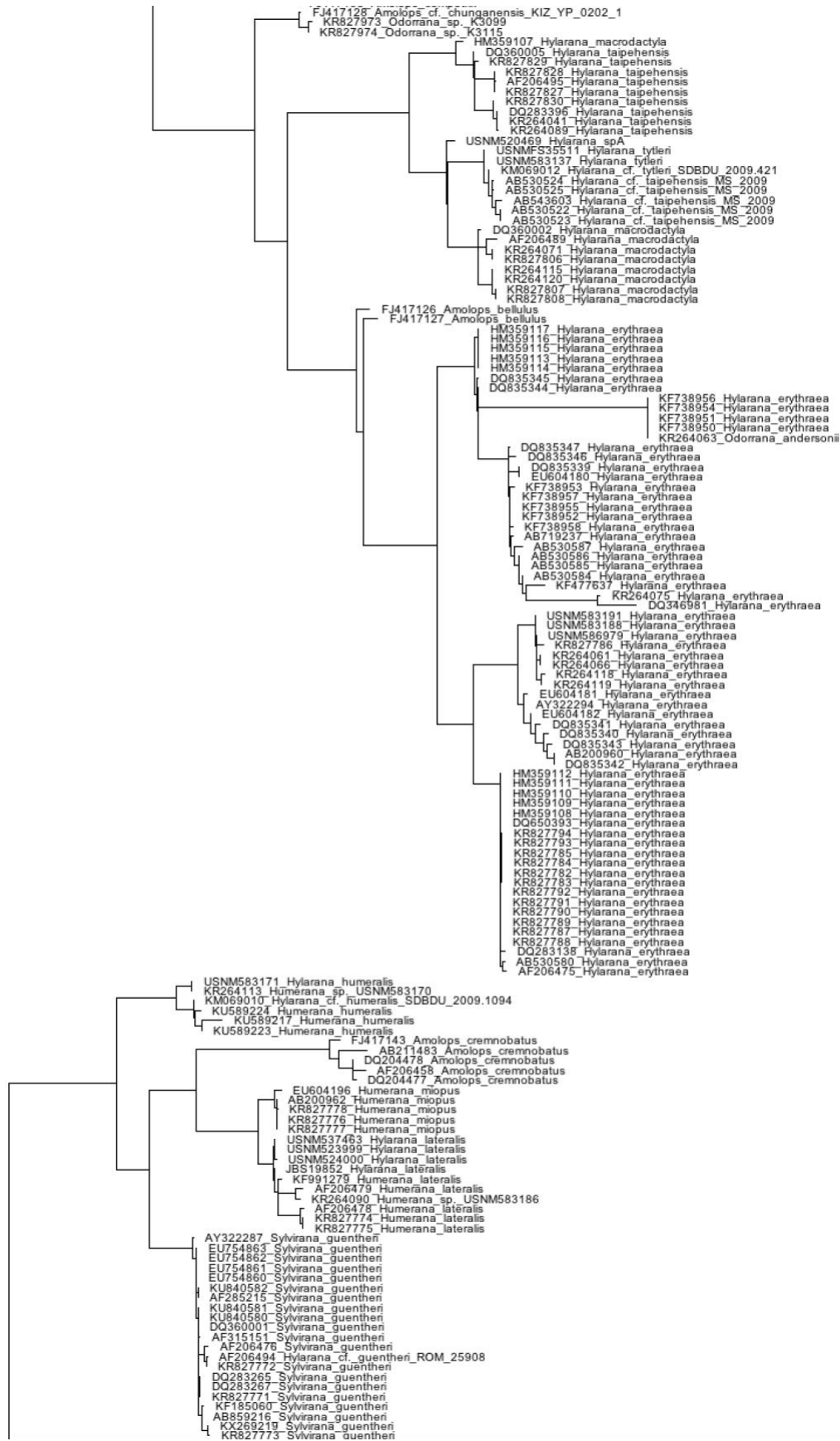
Fig. 4. Microhylidae 16S neighbor-joining tree.

1219 125 5555 4

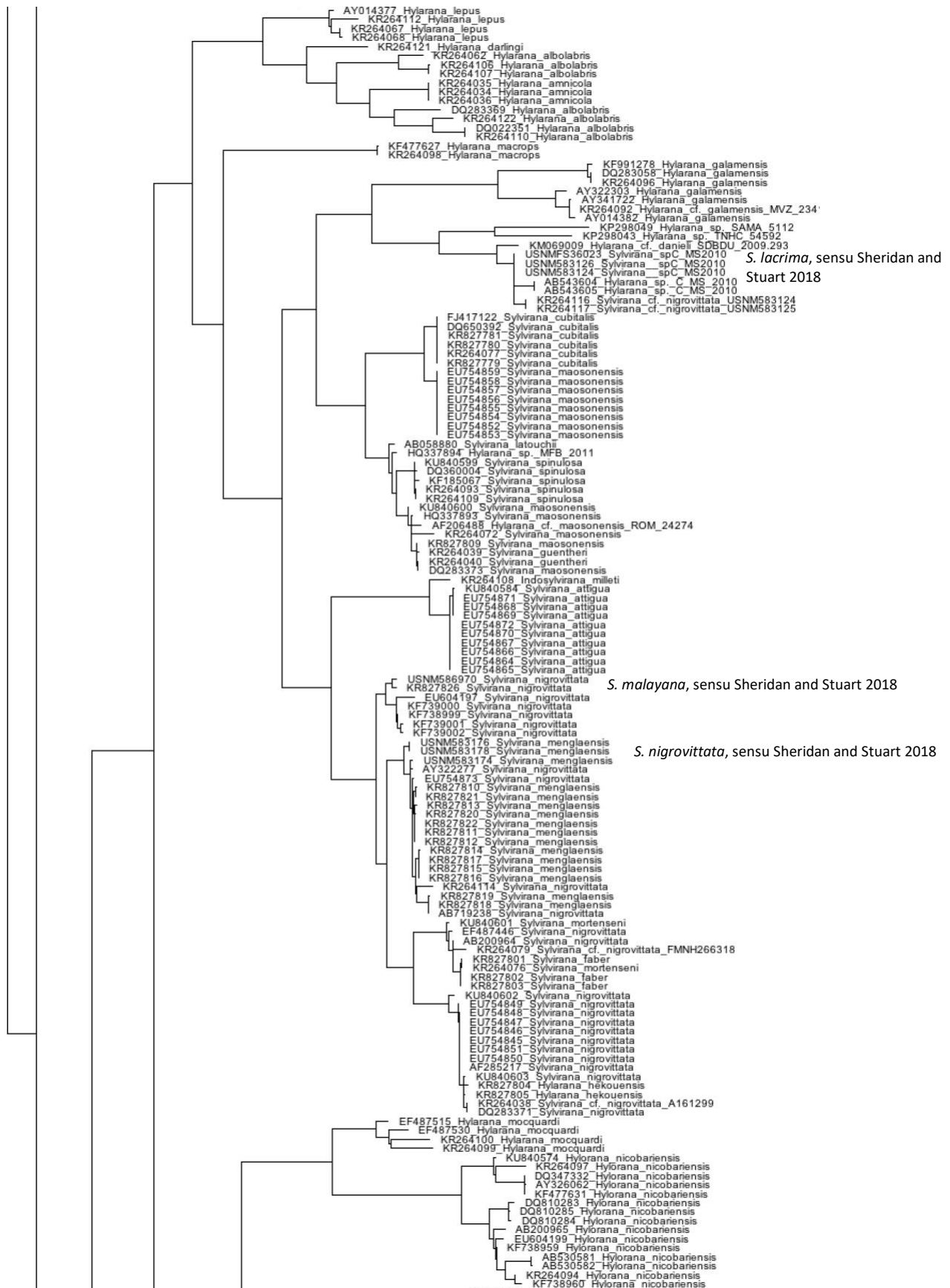




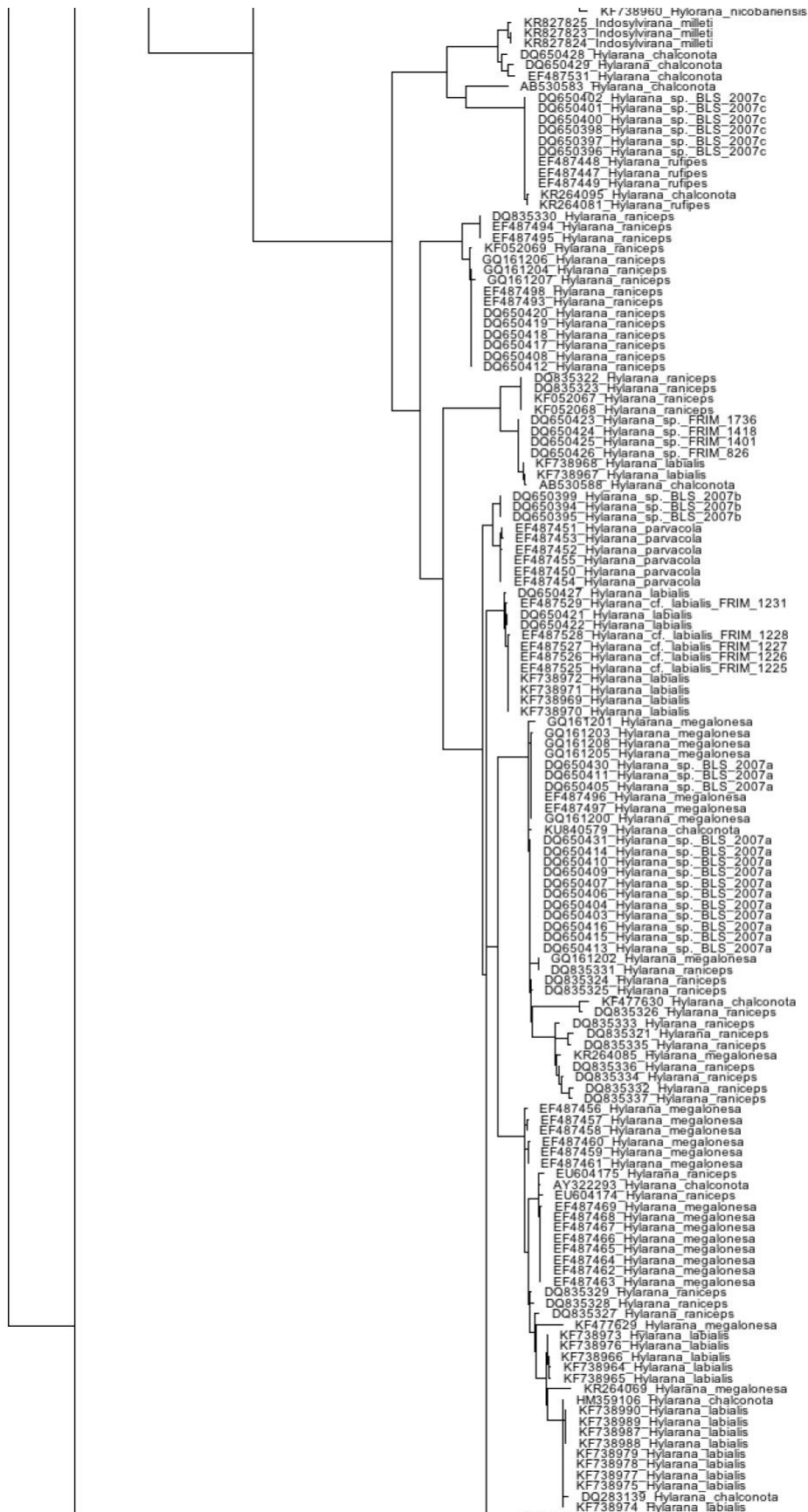
# Supplementary Files: Mulcahy et al., Filling the BINs of Life



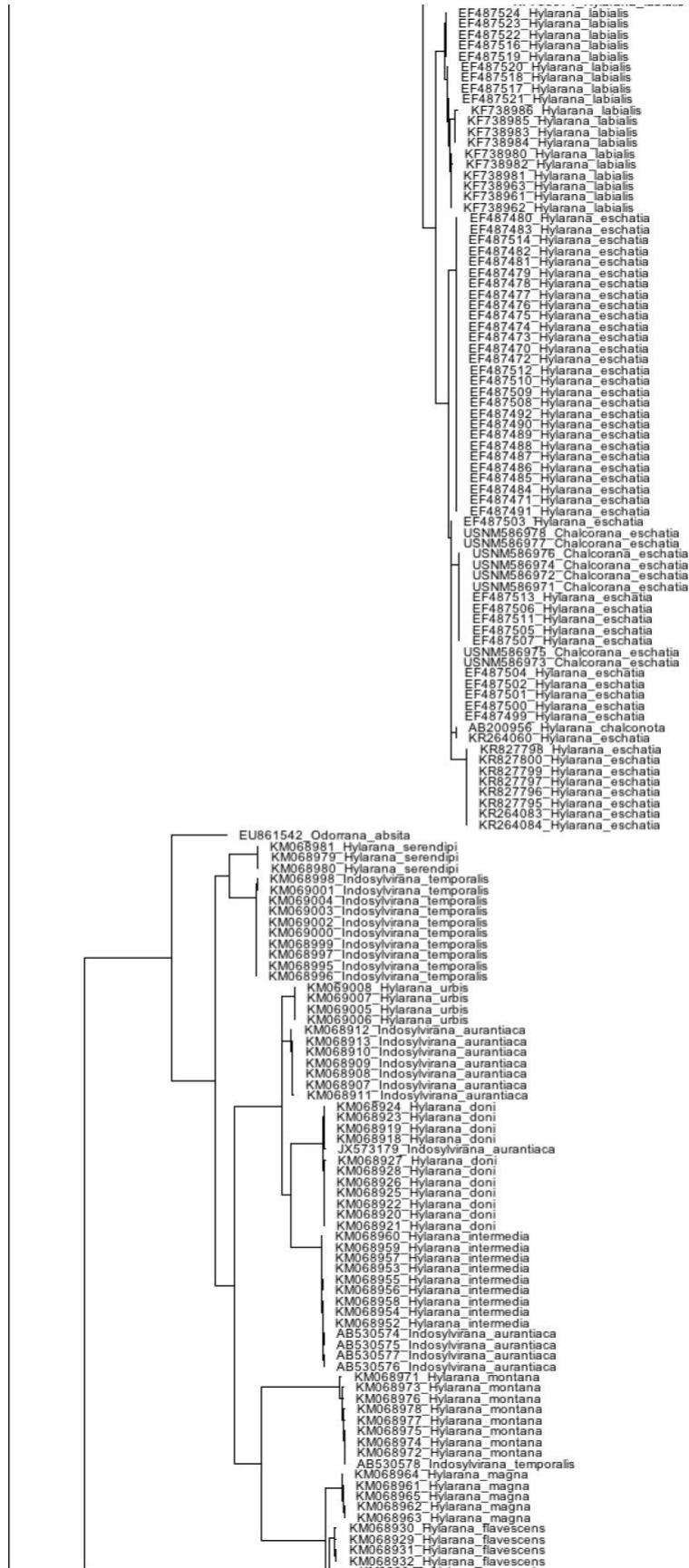
# Supplementary Files: Mulcahy et al., Filling the BINs of Life



# Supplementary Files: Mulcahy et al., Filling the BINs of Life



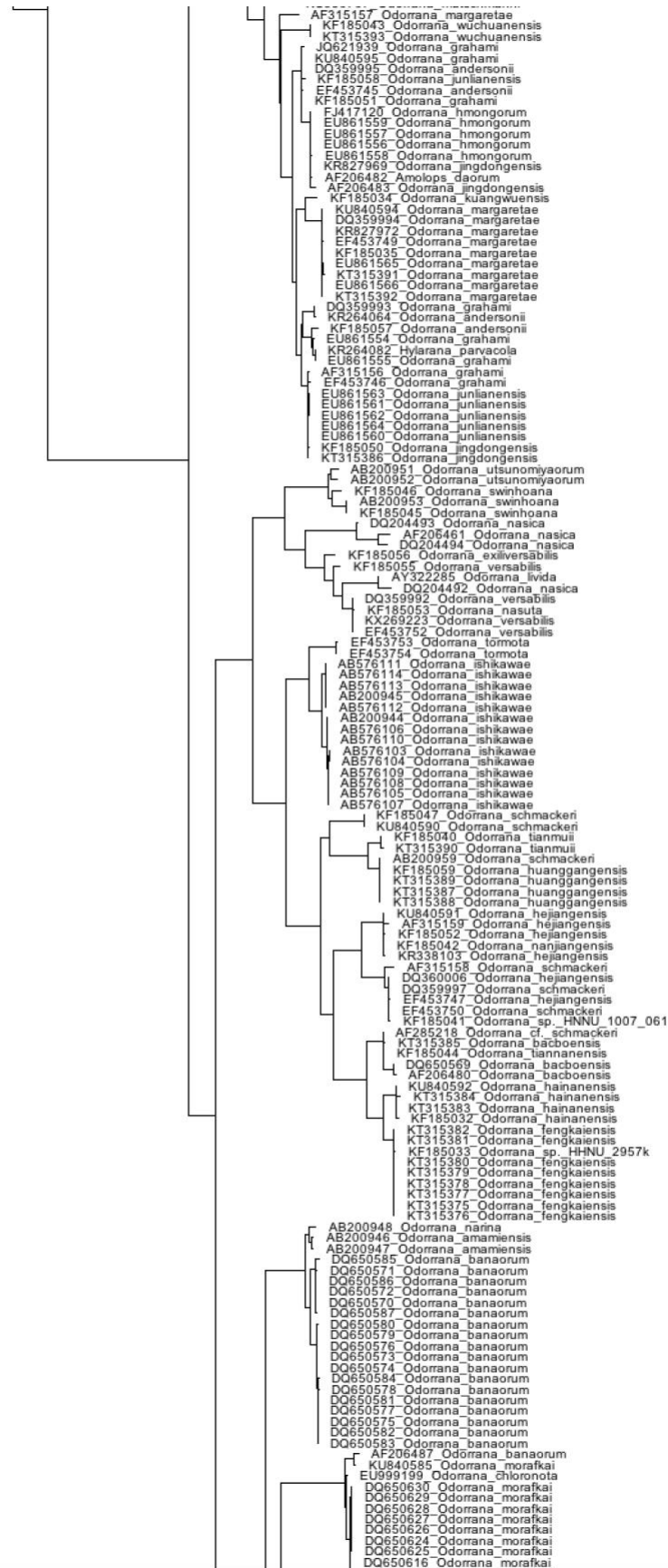
# Supplementary Files: Mulcahy et al., Filling the BINs of Life



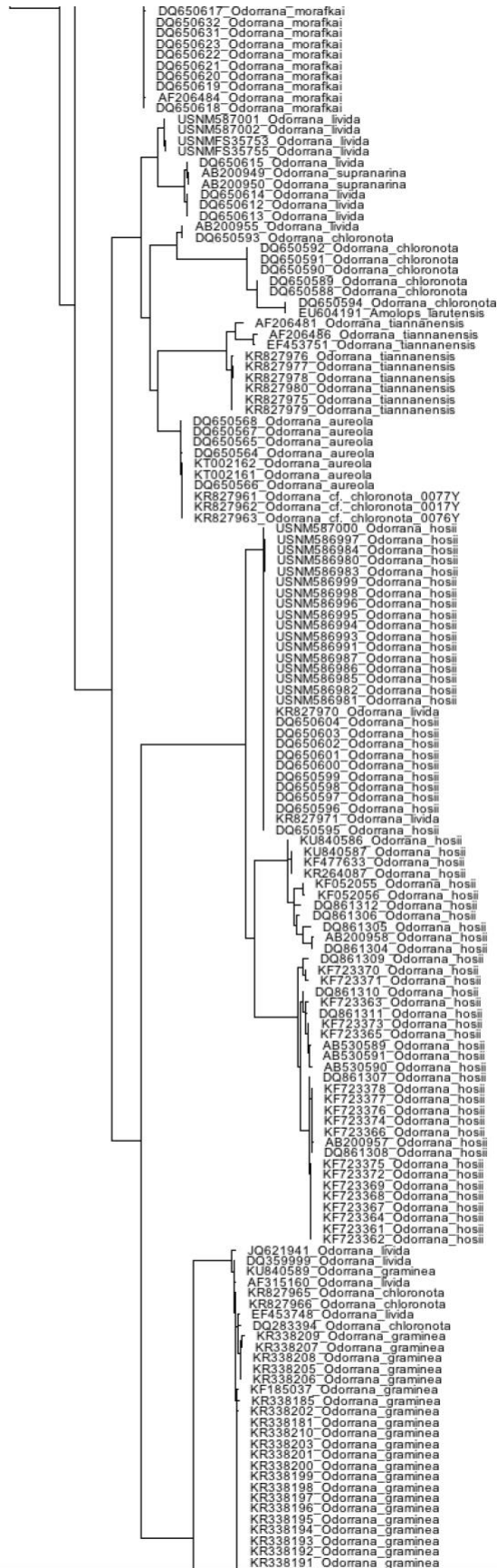
# Supplementary Files: Mulcahy et al., Filling the BINs of Life

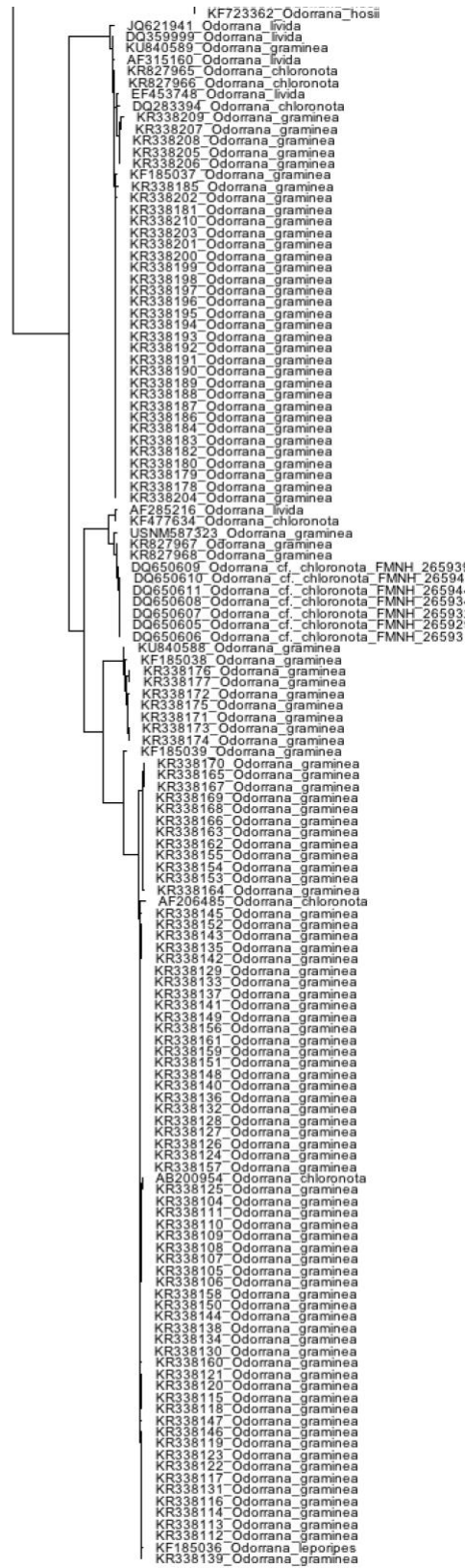


# Supplementary Files: Mulcahy et al., Filling the BINs of Life



# Supplementary Files: Mulcahy et al., Filling the BINs of Life





200.0

Fig. 5. Ranidae 16S neighbor-joining tree.

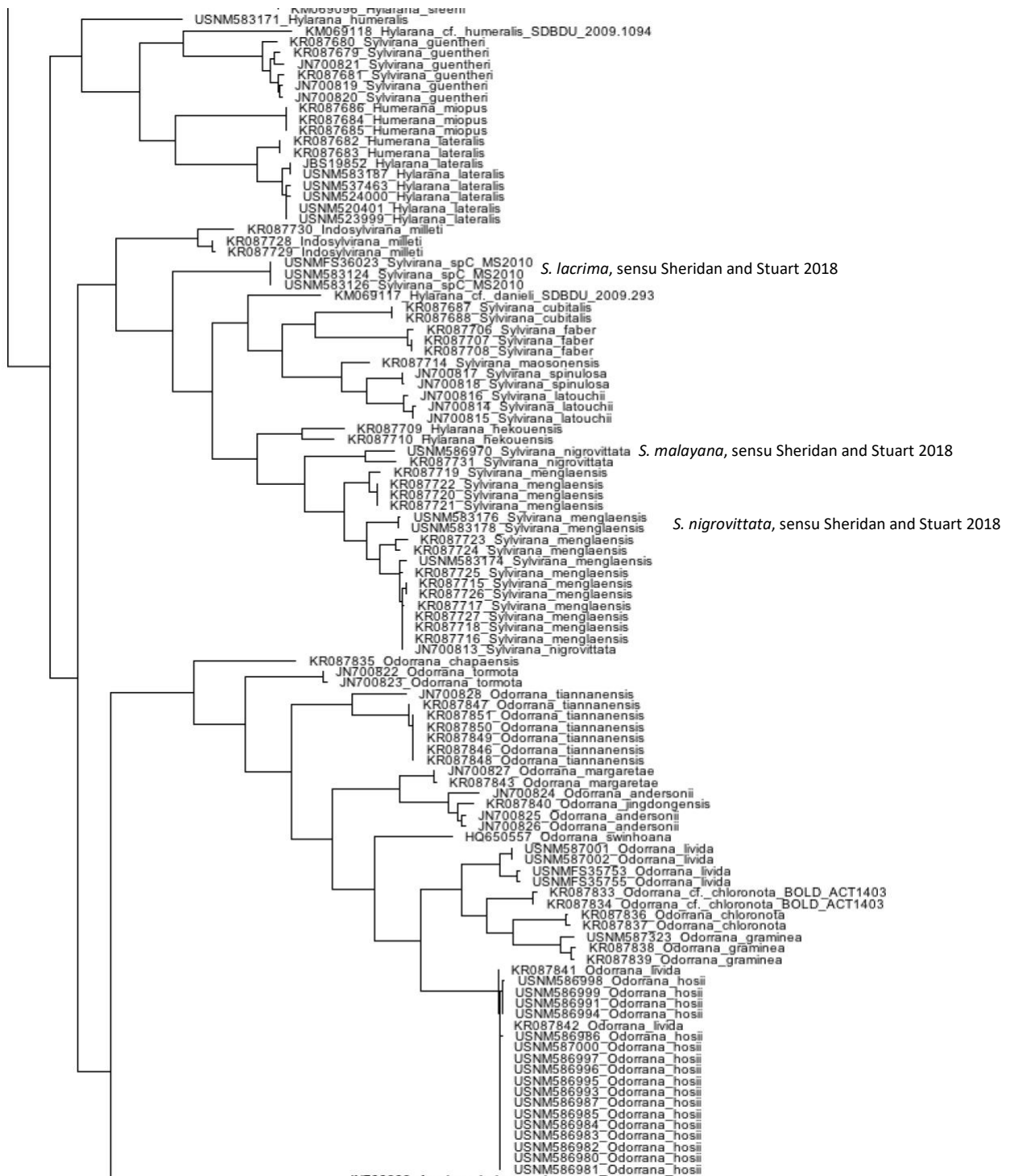


Phylogenetic tree showing relationships among *Hylarana* species based on 16S rDNA sequences. The tree is rooted on the left and branches out to the right. Species names are listed at the tips of the branches. The tree shows several major clades, including *Hylarana taipehensis*, *Hylarana erythraea*, *Indosylvirana*, and *Hylarana indica*. Bootstrap values are indicated at the nodes. The scale bar represents 0.01 substitutions per site.

Species names (from top to bottom):

- KR087734 *Hylarana taipehensis*
- KR087735 *Hylarana taipehensis*
- KR087736 *Hylarana taipehensis*
- USNM520469 *Hylarana spa*
- KM069120 *Hylarana cf. tyleri*
- USNM583137 *Hylarana tyleri*
- USNM583551 *Hylarana tyleri*
- JN700993 *Hylarana macrodactyla*
- KR087711 *Hylarana macrodactyla*
- KR087712 *Hylarana macrodactyla*
- KR087713 *Hylarana macrodactyla*
- KR087693 *Hylarana erythraea*
- USNM586979 *Hylarana erythraea*
- USNM583189 *Hylarana erythraea*
- USNM583190 *Hylarana erythraea*
- KR087694 *Hylarana erythraea*
- KR087695 *Hylarana erythraea*
- KR087696 *Hylarana erythraea*
- KR087697 *Hylarana erythraea*
- KR087698 *Hylarana erythraea*
- KR087699 *Hylarana erythraea*
- KR087700 *Hylarana erythraea*
- KR087691 *Hylarana erythraea*
- KR087692 *Hylarana erythraea*
- KR087693 *Hylarana erythraea*
- KR087694 *Hylarana erythraea*
- KR087695 *Hylarana erythraea*
- KR087696 *Hylarana erythraea*
- KR087697 *Hylarana erythraea*
- KR087698 *Hylarana erythraea*
- KR087699 *Hylarana erythraea*
- KR087700 *Hylarana erythraea*
- KR087701 *Hylarana erythraea*
- KR087702 *Hylarana erythraea*
- KR087703 *Hylarana erythraea*
- KR087704 *Hylarana erythraea*
- KR087705 *Hylarana erythraea*
- KR087706 *Hylarana erythraea*
- KR087707 *Hylarana erythraea*
- KR087708 *Hylarana erythraea*
- KR087709 *Hylarana erythraea*
- KR087710 *Hylarana erythraea*
- KR087711 *Hylarana erythraea*
- KR087712 *Hylarana erythraea*
- KR087713 *Hylarana erythraea*
- KR087714 *Hylarana erythraea*
- KR087715 *Hylarana erythraea*
- KR087716 *Hylarana erythraea*
- KR087717 *Hylarana erythraea*
- KR087718 *Hylarana erythraea*
- KR087719 *Hylarana erythraea*
- KR087720 *Hylarana erythraea*
- KR087721 *Hylarana erythraea*
- KR087722 *Hylarana erythraea*
- KR087723 *Hylarana erythraea*
- KR087724 *Hylarana erythraea*
- KR087725 *Hylarana erythraea*
- KR087726 *Hylarana erythraea*
- KR087727 *Hylarana erythraea*
- KR087728 *Hylarana erythraea*
- KR087729 *Hylarana erythraea*
- KR087730 *Hylarana erythraea*
- KR087731 *Hylarana erythraea*
- KR087732 *Hylarana erythraea*
- KR087733 *Hylarana erythraea*
- KR087734 *Hylarana erythraea*
- KR087735 *Hylarana erythraea*
- KR087736 *Hylarana erythraea*
- KR087737 *Hylarana erythraea*
- KR087738 *Hylarana erythraea*
- KR087739 *Hylarana erythraea*
- KR087740 *Hylarana erythraea*
- KR087741 *Hylarana erythraea*
- KR087742 *Hylarana erythraea*
- KR087743 *Hylarana erythraea*
- KR087744 *Hylarana erythraea*
- KR087745 *Hylarana erythraea*
- KR087746 *Hylarana erythraea*
- KR087747 *Hylarana erythraea*
- KR087748 *Hylarana erythraea*
- KR087749 *Hylarana erythraea*
- KR087750 *Hylarana erythraea*
- KR087751 *Hylarana erythraea*
- KR087752 *Hylarana erythraea*
- KR087753 *Hylarana erythraea*
- KR087754 *Hylarana erythraea*
- KR087755 *Hylarana erythraea*
- KR087756 *Hylarana erythraea*
- KR087757 *Hylarana erythraea*
- KR087758 *Hylarana erythraea*
- KR087759 *Hylarana erythraea*
- KR087760 *Hylarana erythraea*
- KR087761 *Hylarana erythraea*
- KR087762 *Hylarana erythraea*
- KR087763 *Hylarana erythraea*
- KR087764 *Hylarana erythraea*
- KR087765 *Hylarana erythraea*
- KR087766 *Hylarana erythraea*
- KR087767 *Hylarana erythraea*
- KR087768 *Hylarana erythraea*
- KR087769 *Hylarana erythraea*
- KR087770 *Hylarana erythraea*
- KR087771 *Hylarana erythraea*
- KR087772 *Hylarana erythraea*
- KR087773 *Hylarana erythraea*
- KR087774 *Hylarana erythraea*
- KR087775 *Hylarana erythraea*
- KR087776 *Hylarana erythraea*
- KR087777 *Hylarana erythraea*
- KR087778 *Hylarana erythraea*
- KR087779 *Hylarana erythraea*
- KR087780 *Hylarana erythraea*
- KR087781 *Hylarana erythraea*
- KR087782 *Hylarana erythraea*
- KR087783 *Hylarana erythraea*
- KR087784 *Hylarana erythraea*
- KR087785 *Hylarana erythraea*
- KR087786 *Hylarana erythraea*
- KR087787 *Hylarana erythraea*
- KR087788 *Hylarana erythraea*
- KR087789 *Hylarana erythraea*
- KR087790 *Hylarana erythraea*
- KR087791 *Hylarana erythraea*
- KR087792 *Hylarana erythraea*
- KR087793 *Hylarana erythraea*
- KR087794 *Hylarana erythraea*
- KR087795 *Hylarana erythraea*
- KR087796 *Hylarana erythraea*
- KR087797 *Hylarana erythraea*
- KR087798 *Hylarana erythraea*
- KR087799 *Hylarana erythraea*
- KR087800 *Hylarana erythraea*
- KR087801 *Hylarana erythraea*
- KR087802 *Hylarana erythraea*
- KR087803 *Hylarana erythraea*
- KR087804 *Hylarana erythraea*
- KR087805 *Hylarana erythraea*
- KR087806 *Hylarana erythraea*
- KR087807 *Hylarana erythraea*
- KR087808 *Hylarana erythraea*
- KR087809 *Hylarana erythraea*
- KR087810 *Hylarana erythraea*
- KR087811 *Hylarana erythraea*
- KR087812 *Hylarana erythraea*
- KR087813 *Hylarana erythraea*
- KR087814 *Hylarana erythraea*
- KR087815 *Hylarana erythraea*
- KR087816 *Hylarana erythraea*
- KR087817 *Hylarana erythraea*
- KR087818 *Hylarana erythraea*
- KR087819 *Hylarana erythraea*
- KR087820 *Hylarana erythraea*
- KR087821 *Hylarana erythraea*
- KR087822 *Hylarana erythraea*
- KR087823 *Hylarana erythraea*
- KR087824 *Hylarana erythraea*
- KR087825 *Hylarana erythraea*
- KR087826 *Hylarana erythraea*
- KR087827 *Hylarana erythraea*
- KR087828 *Hylarana erythraea*

# Supplementary Files: Mulcahy et al., Filling the BINs of Life



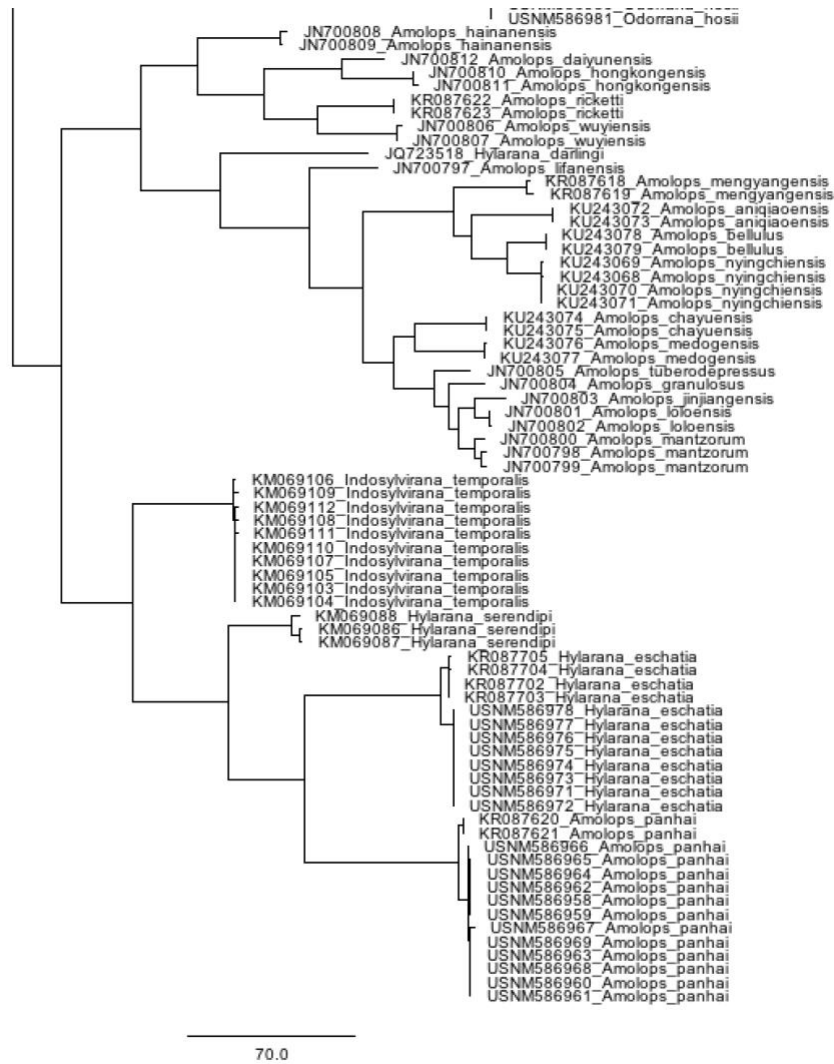
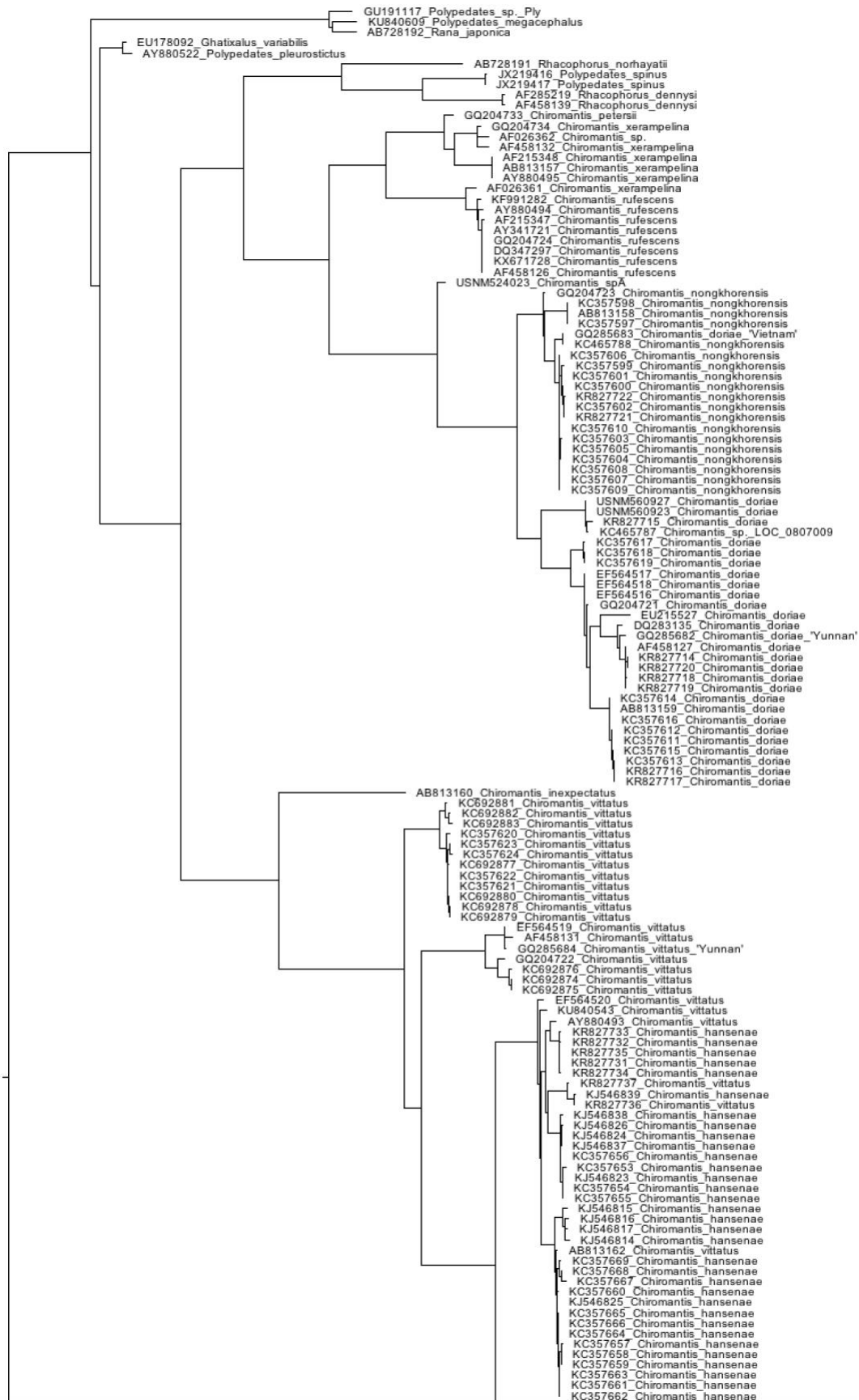
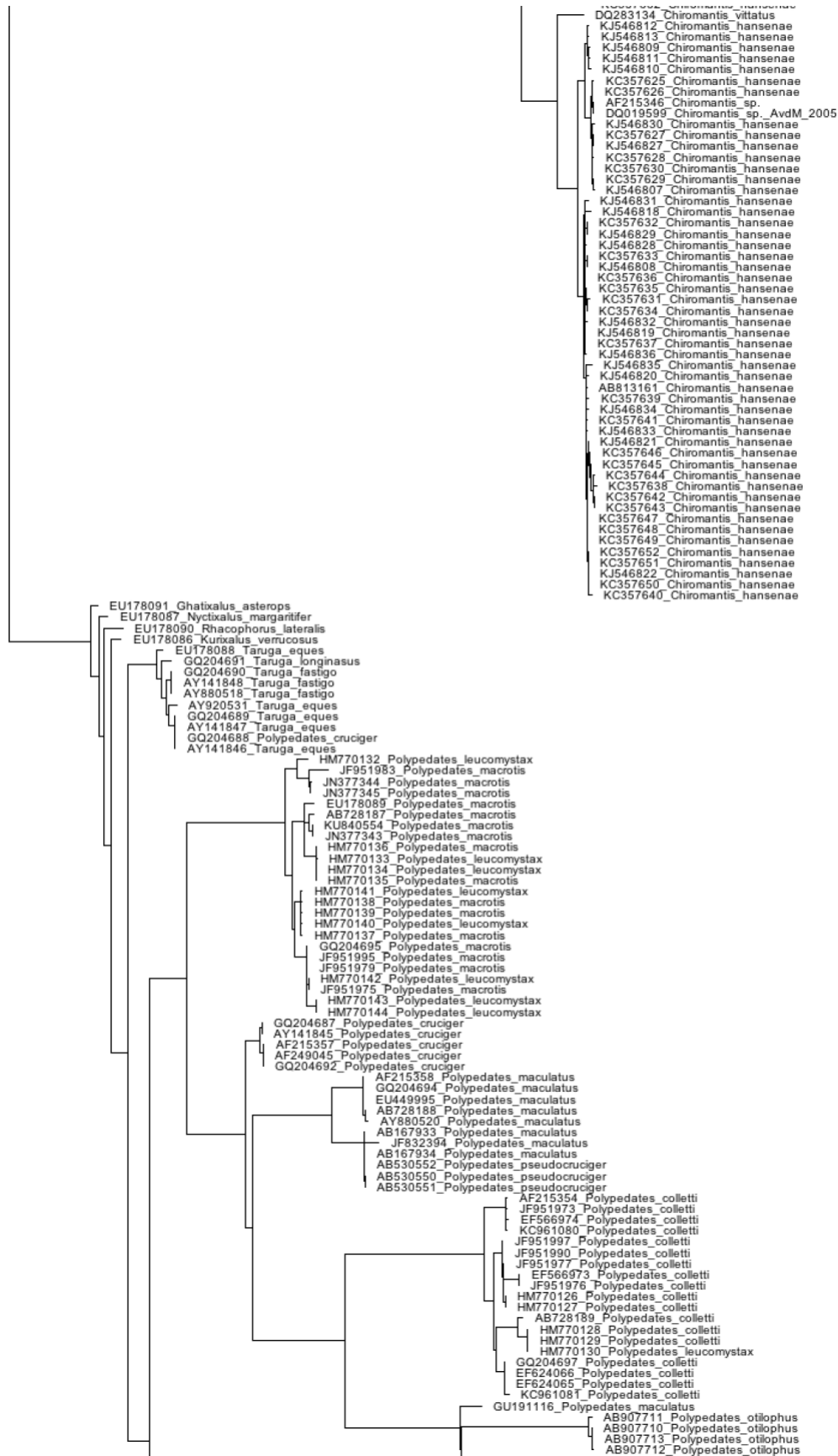


Fig. 6. Ranidae COI neighbor-joining tree.

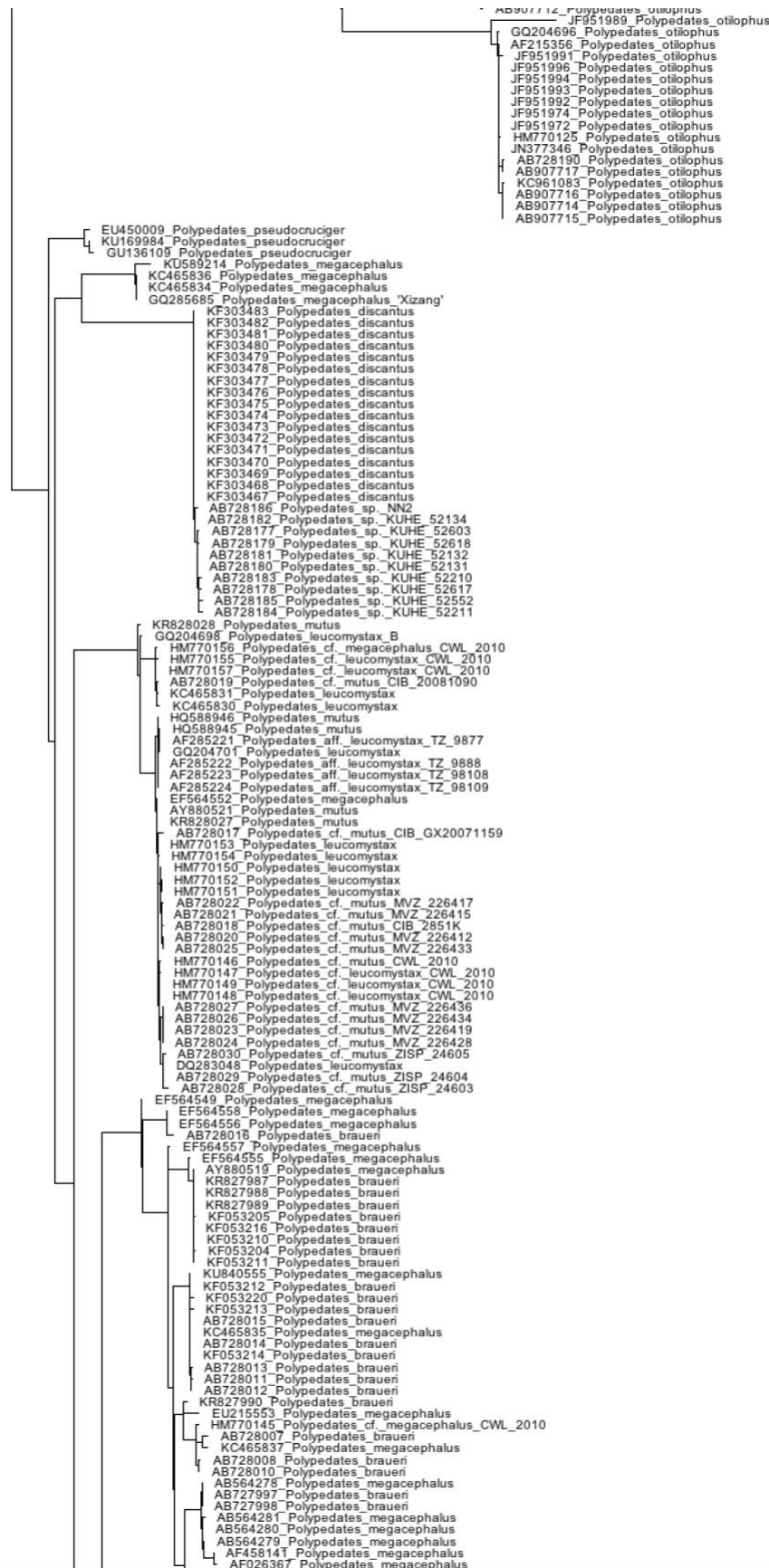
# Supplementary Files: Mulcahy et al., Filling the BINs of Life



# Supplementary Files: Mulcahy et al., Filling the BINs of Life



# Supplementary Files: Mulcahy et al., Filling the BINs of Life



# Supplementary Files: Mulcahy et al., Filling the BINs of Life



AF280397 Polypedates megacephalus  
 AB728005 Polypedates braueri  
 AB728006 Polypedates braueri  
 AB728004 Polypedates braueri  
 AB728003 Polypedates braueri  
 AB728009 Polypedates braueri  
 AB564282 Polypedates megacephalus  
 AB728001 Polypedates braueri  
 AB728002 Polypedates braueri  
 EU215552 Polypedates megacephalus  
 AB727999 Polypedates braueri  
 AB728000 Polypedates braueri  
 KC180075 Polypedates megacephalus  
 AF285220 Polypedates leucomystax  
 AB728045 Polypedates megacephalus  
 AB728048 Polypedates megacephalus  
 AB728039 Polypedates megacephalus  
 HM770163 Polypedates leucomystax  
 AB728041 Polypedates megacephalus  
 AB728042 Polypedates megacephalus  
 HM770166 Polypedates leucomystax  
 AB564283 Polypedates megacephalus  
 KR828005 Polypedates megacephalus  
 AB564284 Polypedates megacephalus  
 EU215550 Polypedates leucomystax  
 KR828006 Polypedates megacephalus  
 KR828007 Polypedates megacephalus  
 AB728046 Polypedates megacephalus  
 AB728047 Polypedates megacephalus  
 AB728044 Polypedates megacephalus  
 HM770164 Polypedates leucomystax  
 AB728040 Polypedates leucomystax  
 HM770165 Polypedates leucomystax  
 AB728038 Polypedates megacephalus  
 AB728050 Polypedates megacephalus  
 AB728049 Polypedates megacephalus  
 AB728043 Polypedates megacephalus  
 AB728036 Polypedates megacephalus  
 AB728037 Polypedates megacephalus  
 HM770172 Polypedates leucomystax  
 AB728035 Polypedates megacephalus  
 AB728034 Polypedates megacephalus  
 AB728031 Polypedates megacephalus  
 AB728032 Polypedates megacephalus  
 AB728033 Polypedates megacephalus  
 HM770169 Polypedates cf. leucomystax\_CWL\_2010  
 HM770170 Polypedates leucomystax  
 HM770171 Polypedates leucomystax  
 EF564559 Polypedates megacephalus  
 KU840556 Polypedates megacephalus  
 HM770168 Polypedates cf. mutus\_CWL\_2010  
 HM770167 Polypedates cf. megacephalus\_CWL\_2010  
 HM359099 Polypedates leucomystax  
 HM359098 Polypedates leucomystax  
 HM359100 Polypedates leucomystax  
 HM359097 Polypedates leucomystax  
 AB728071 Polypedates megacephalus  
 AB728070 Polypedates megacephalus  
 AB728068 Polypedates megacephalus  
 AB728069 Polypedates megacephalus  
 AB728072 Polypedates megacephalus  
 AB728080 Polypedates megacephalus  
 AB728077 Polypedates megacephalus  
 AB728076 Polypedates megacephalus  
 AB728079 Polypedates megacephalus  
 KR828015 Polypedates megacephalus  
 KR828016 Polypedates megacephalus  
 KR828014 Polypedates megacephalus  
 GQ204700 Polypedates leucomystax  
 AB728067 Polypedates megacephalus  
 AB728058 Polypedates megacephalus  
 AB728057 Polypedates megacephalus  
 AB728064 Polypedates megacephalus  
 AB728056 Polypedates megacephalus  
 AB728062 Polypedates megacephalus  
 AB728065 Polypedates megacephalus  
 AB728060 Polypedates megacephalus  
 AB728055 Polypedates megacephalus  
 AB728054 Polypedates megacephalus  
 AB728053 Polypedates megacephalus  
 AB728051 Polypedates megacephalus  
 AB728052 Polypedates megacephalus  
 KC180033 Polypedates leucomystax  
 HQ588948 Polypedates leucomystax  
 HQ588947 Polypedates leucomystax  
 AB728063 Polypedates megacephalus  
 AB728061 Polypedates megacephalus  
 AB728066 Polypedates megacephalus  
 AB728059 Polypedates megacephalus  
 GQ204699 Polypedates leucomystax\_A  
 AB728091 Polypedates megacephalus  
 KC465833 Polypedates leucomystax  
 KR828008 Polypedates megacephalus  
 HM359101 Polypedates leucomystax  
 AB728087 Polypedates megacephalus  
 AB728086 Polypedates megacephalus  
 AB728074 Polypedates megacephalus  
 AB728088 Polypedates megacephalus  
 AB728081 Polypedates megacephalus  
 AB728085 Polypedates megacephalus  
 AB728084 Polypedates megacephalus  
 AB728082 Polypedates megacephalus  
 AB728083 Polypedates megacephalus  
 AB728073 Polypedates megacephalus  
 AB728075 Polypedates megacephalus  
 AB728076 Polypedates megacephalus  
 KR828026 Polypedates megacephalus  
 AB728090 Polypedates megacephalus  
 AB728089 Polypedates megacephalus  
 KR828009 Polypedates megacephalus  
 KR828025 Polypedates megacephalus  
 KR828024 Polypedates megacephalus  
 KR828023 Polypedates megacephalus  
 KR828022 Polypedates megacephalus  
 KR828021 Polypedates megacephalus  
 KR828020 Polypedates megacephalus  
 KR828019 Polypedates megacephalus  
 KR828018 Polypedates megacephalus  
 KR828017 Polypedates megacephalus  
 KR828013 Polypedates megacephalus  
 KR828012 Polypedates megacephalus  
 KR828011 Polypedates megacephalus  
 AB530566 Polypedates leucomystax  
 KR828010 Polypedates megacephalus

## Supplementary Files: Mulcahy et al., Filling the BINs of Life

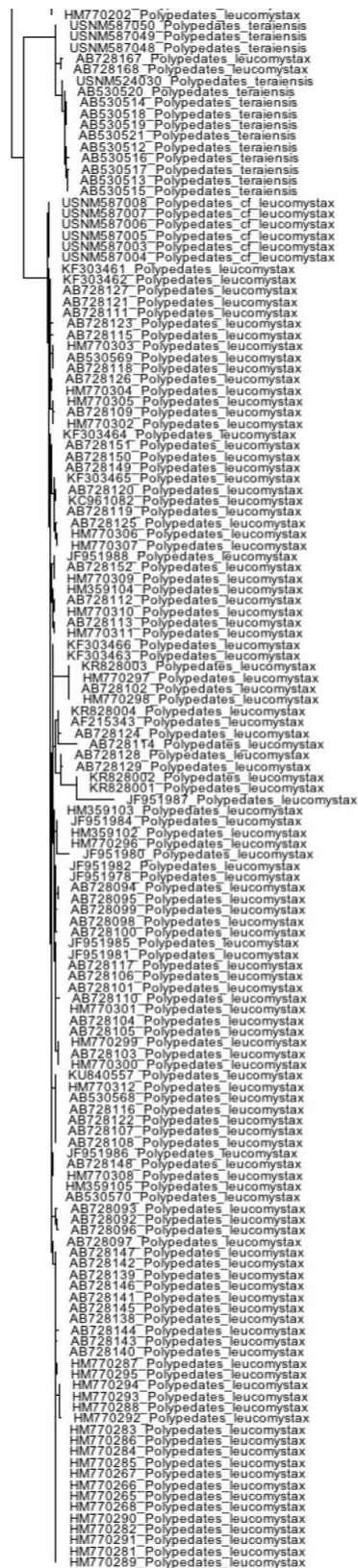
USNM587018 Polypedates\_impresus  
USNM587017 Polypedates\_impresus  
USNM587016 Polypedates\_impresus  
USNM587015 Polypedates\_impresus  
USNM587014 Polypedates\_impresus  
USNM587013 Polypedates\_impresus  
USNM587012 Polypedates\_impresus  
USNM587011 Polypedates\_impresus  
USNM587010 Polypedates\_impresus  
USNM587009 Polypedates\_impresus  
USNM587059 Polypedates\_impresus  
KR828029 Polypedates\_sp\_0980Y  
KR828032 Polypedates\_sp\_0979Y  
KR828030 Polypedates\_sp\_0902Y  
KR828031 Polypedates\_sp\_0978Y  
EF564551 Polypedates\_megacephalus  
EF564554 Polypedates\_megacephalus  
EF564550 Polypedates\_megacephalus  
KR827991 Polypedates\_impresus  
KR827995 Polypedates\_impresus  
JQ517288 Polypedates\_leucomystax  
EF564553 Polypedates\_megacephalus  
KR827999 Polypedates\_impresus  
KR827998 Polypedates\_impresus  
KR827992 Polypedates\_impresus  
KR827993 Polypedates\_impresus  
KR828000 Polypedates\_impresus  
KR827997 Polypedates\_impresus  
KR827994 Polypedates\_impresus  
KR827995 Polypedates\_impresus  
EU215551 Polypedates\_mutus  
HM770159 Polypedates\_cf\_mutus\_CWL\_2010  
HM770162 Polypedates\_leucomystax  
HM770158 Polypedates\_cf\_mutus\_CWL\_2010  
KF053209 Polypedates\_impresus  
KC465832 Polypedates\_leucomystax  
KF053208 Polypedates\_impresus  
HM770160 Polypedates\_leucomystax  
HM770161 Polypedates\_leucomystax  
AB728169 Polypedates\_cf\_mutus\_KUHE\_32448  
AB728176 Polypedates\_cf\_mutus\_KUHE\_40700  
AB728173 Polypedates\_cf\_mutus\_KUHE\_40741  
AB728175 Polypedates\_cf\_mutus\_KUHE\_40699  
AB728174 Polypedates\_cf\_mutus\_KUHE\_40698  
AB728171 Polypedates\_cf\_mutus\_KUHE\_40739  
AB728172 Polypedates\_cf\_mutus\_KUHE\_40740  
AB728170 Polypedates\_cf\_mutus\_KUHE\_40701  
AB728135 Polypedates\_leucomystax  
AB728137 Polypedates\_leucomystax  
HM770313 Polypedates\_leucomystax  
HM770269 Polypedates\_leucomystax  
AF026368 Polypedates\_leucomystax  
HM770272 Polypedates\_leucomystax  
HM770271 Polypedates\_leucomystax  
HM770278 Polypedates\_leucomystax  
HM770276 Polypedates\_leucomystax  
HM770280 Polypedates\_leucomystax  
HM770273 Polypedates\_leucomystax  
HM770274 Polypedates\_leucomystax  
HM770279 Polypedates\_leucomystax  
HM770277 Polypedates\_leucomystax  
HM770275 Polypedates\_leucomystax  
HM770314 Polypedates\_leucomystax  
HM770315 Polypedates\_leucomystax  
HM770387 Polypedates\_leucomystax  
HM770270 Polypedates\_leucomystax  
HM770388 Polypedates\_leucomystax  
HM770321 Polypedates\_leucomystax  
HM770320 Polypedates\_leucomystax  
HM770319 Polypedates\_leucomystax  
HM770318 Polypedates\_leucomystax  
HM770323 Polypedates\_leucomystax  
HM770317 Polypedates\_leucomystax  
HM770381 Polypedates\_leucomystax  
HM770380 Polypedates\_leucomystax  
HM770371 Polypedates\_leucomystax  
HM770370 Polypedates\_leucomystax  
HM770369 Polypedates\_leucomystax  
HM770368 Polypedates\_leucomystax  
HM770366 Polypedates\_leucomystax  
HM770365 Polypedates\_leucomystax  
HM770364 Polypedates\_leucomystax  
HM770363 Polypedates\_leucomystax  
HM770362 Polypedates\_leucomystax  
HM770325 Polypedates\_leucomystax  
HM770324 Polypedates\_leucomystax  
HM770322 Polypedates\_leucomystax  
HM770335 Polypedates\_leucomystax  
HM770384 Polypedates\_leucomystax  
HM770383 Polypedates\_leucomystax  
HM770382 Polypedates\_leucomystax  
HM770378 Polypedates\_leucomystax  
HM770367 Polypedates\_leucomystax  
HM770361 Polypedates\_leucomystax  
HM770360 Polypedates\_leucomystax  
HM770359 Polypedates\_leucomystax  
HM770357 Polypedates\_leucomystax  
HM770358 Polypedates\_leucomystax  
HM770356 Polypedates\_leucomystax  
HM770355 Polypedates\_leucomystax  
HM770354 Polypedates\_leucomystax  
HM770353 Polypedates\_leucomystax  
HM770352 Polypedates\_leucomystax  
HM770351 Polypedates\_leucomystax  
HM770350 Polypedates\_leucomystax  
HM770349 Polypedates\_leucomystax  
HM770348 Polypedates\_leucomystax  
HM770347 Polypedates\_leucomystax  
HM770346 Polypedates\_leucomystax  
HM770345 Polypedates\_leucomystax  
HM770344 Polypedates\_leucomystax  
HM770336 Polypedates\_leucomystax  
HM770386 Polypedates\_leucomystax  
HM770342 Polypedates\_leucomystax  
HM770341 Polypedates\_leucomystax  
HM770340 Polypedates\_leucomystax  
HM770339 Polypedates\_leucomystax  
HM770338 Polypedates\_leucomystax  
HM770337 Polypedates\_leucomystax  
HM770385 Polypedates\_leucomystax  
HM770377 Polypedates\_leucomystax  
HM770376 Polypedates\_leucomystax  
HM770375 Polypedates\_leucomystax  
HM770373 Polypedates\_leucomystax  
HM770372 Polypedates\_leucomystax  
HM770343 Polypedates\_leucomystax  
HM770374 Polypedates\_leucomystax  
HM770379 Polypedates\_leucomystax  
HM770316 Polypedates\_leucomystax  
HM770334 Polypedates\_leucomystax  
HM770332 Polypedates\_leucomystax  
HM770331 Polypedates\_leucomystax  
AB728136 Polypedates\_leucomystax

*P. mutus*, sensu Wilkinson, Mulcahy, Zug, in prep.



## Supplementary Files: Mulcahy et al., Filling the BINs of Life

AB728136 Polypedates\_leucomystax  
AB728166 Polypedates\_leucomystax  
AB728165 Polypedates\_leucomystax  
AB530567 Polypedates\_leucomystax  
AB728164 Polypedates\_leucomystax  
HM770328 Polypedates\_leucomystax  
HM770326 Polypedates\_leucomystax  
HM770330 Polypedates\_leucomystax  
HM770333 Polypedates\_leucomystax  
HM770327 Polypedates\_leucomystax  
HM770329 Polypedates\_leucomystax  
AF458140 Polypedates\_leucomystax  
HM770389 Polypedates\_leucomystax  
GQ204693 Polypedates\_leucomystax  
AY141849 Polypedates\_leucomystax  
HM770264 Polypedates\_leucomystax  
HM770262 Polypedates\_leucomystax  
HM770263 Polypedates\_leucomystax  
HM770261 Polypedates\_leucomystax  
HM770260 Polypedates\_leucomystax  
AB564287 Polypedates\_leucomystax  
AB564288 Polypedates\_leucomystax  
AB564285 Polypedates\_leucomystax  
AB564286 Polypedates\_leucomystax  
AB728134 Polypedates\_leucomystax  
HM770259 Polypedates\_leucomystax  
HM770257 Polypedates\_leucomystax  
HM770258 Polypedates\_leucomystax  
HM770255 Polypedates\_leucomystax  
HM770253 Polypedates\_leucomystax  
HM770252 Polypedates\_leucomystax  
HM770250 Polypedates\_leucomystax  
HM770249 Polypedates\_leucomystax  
HM770248 Polypedates\_leucomystax  
HM770251 Polypedates\_leucomystax  
HM770256 Polypedates\_leucomystax  
HM770254 Polypedates\_leucomystax  
AB728153 Polypedates\_leucomystax  
AB728132 Polypedates\_leucomystax  
AB728131 Polypedates\_leucomystax  
AB728130 Polypedates\_leucomystax  
AB728133 Polypedates\_leucomystax  
HM770174 Polypedates\_leucomystax  
AB728159 Polypedates\_leucomystax  
HM770173 Polypedates\_leucomystax  
HM770176 Polypedates\_leucomystax  
AB728155 Polypedates\_leucomystax  
HM770175 Polypedates\_leucomystax  
HM770223 Polypedates\_leucomystax  
HM770224 Polypedates\_leucomystax  
HM770227 Polypedates\_leucomystax  
HM770226 Polypedates\_leucomystax  
HM770225 Polypedates\_leucomystax  
HM770222 Polypedates\_leucomystax  
HM770233 Polypedates\_leucomystax  
HM770228 Polypedates\_leucomystax  
HM770232 Polypedates\_leucomystax  
HM770230 Polypedates\_leucomystax  
HM770229 Polypedates\_leucomystax  
HM770231 Polypedates\_leucomystax  
HM770236 Polypedates\_leucomystax  
HM770235 Polypedates\_leucomystax  
HM770234 Polypedates\_leucomystax  
AB728154 Polypedates\_leucomystax  
HM770247 Polypedates\_leucomystax  
HM770246 Polypedates\_leucomystax  
HM770244 Polypedates\_leucomystax  
HM770243 Polypedates\_leucomystax  
HM770245 Polypedates\_leucomystax  
HM770240 Polypedates\_leucomystax  
HM770238 Polypedates\_leucomystax  
HM770241 Polypedates\_leucomystax  
HM770237 Polypedates\_leucomystax  
HM770239 Polypedates\_leucomystax  
HM770242 Polypedates\_leucomystax  
HM770187 Polypedates\_leucomystax  
HM770177 Polypedates\_leucomystax  
HM770184 Polypedates\_leucomystax  
HM770181 Polypedates\_leucomystax  
HM770186 Polypedates\_leucomystax  
HM770185 Polypedates\_leucomystax  
HM770180 Polypedates\_leucomystax  
HM770182 Polypedates\_leucomystax  
HM770183 Polypedates\_leucomystax  
HM770178 Polypedates\_leucomystax  
HM770205 Polypedates\_leucomystax  
HM770213 Polypedates\_leucomystax  
HM770207 Polypedates\_leucomystax  
HM770206 Polypedates\_leucomystax  
HM770199 Polypedates\_leucomystax  
HM770198 Polypedates\_leucomystax  
HM770197 Polypedates\_leucomystax  
HM770193 Polypedates\_leucomystax  
HM770212 Polypedates\_leucomystax  
HM770210 Polypedates\_leucomystax  
HM770196 Polypedates\_leucomystax  
HM770194 Polypedates\_leucomystax  
HM770208 Polypedates\_leucomystax  
HM770179 Polypedates\_leucomystax  
HM770211 Polypedates\_leucomystax  
HM770214 Polypedates\_leucomystax  
HM770203 Polypedates\_leucomystax  
HM770201 Polypedates\_leucomystax  
HM770195 Polypedates\_leucomystax  
HM770204 Polypedates\_leucomystax  
HM770188 Polypedates\_leucomystax  
HM770189 Polypedates\_leucomystax  
HM770220 Polypedates\_leucomystax  
HM770191 Polypedates\_leucomystax  
HM770221 Polypedates\_leucomystax  
AB728163 Polypedates\_leucomystax  
AB728162 Polypedates\_leucomystax  
AB728160 Polypedates\_leucomystax  
AB728161 Polypedates\_leucomystax  
AB728157 Polypedates\_leucomystax  
AB728156 Polypedates\_leucomystax  
AB728158 Polypedates\_leucomystax  
HM770190 Polypedates\_leucomystax  
HM770219 Polypedates\_leucomystax  
HM770192 Polypedates\_leucomystax  
HM770216 Polypedates\_leucomystax  
HM770215 Polypedates\_leucomystax  
HM770218 Polypedates\_leucomystax  
HM770217 Polypedates\_leucomystax  
HM770200 Polypedates\_leucomystax  
HM770209 Polypedates\_leucomystax  
HM770202 Polypedates\_leucomystax



200.0

Fig. 7. Rhacophoridae 16S neighbor-joining tree.

Supplementary Files: Mulcahy et al., Filling the BINs of Life

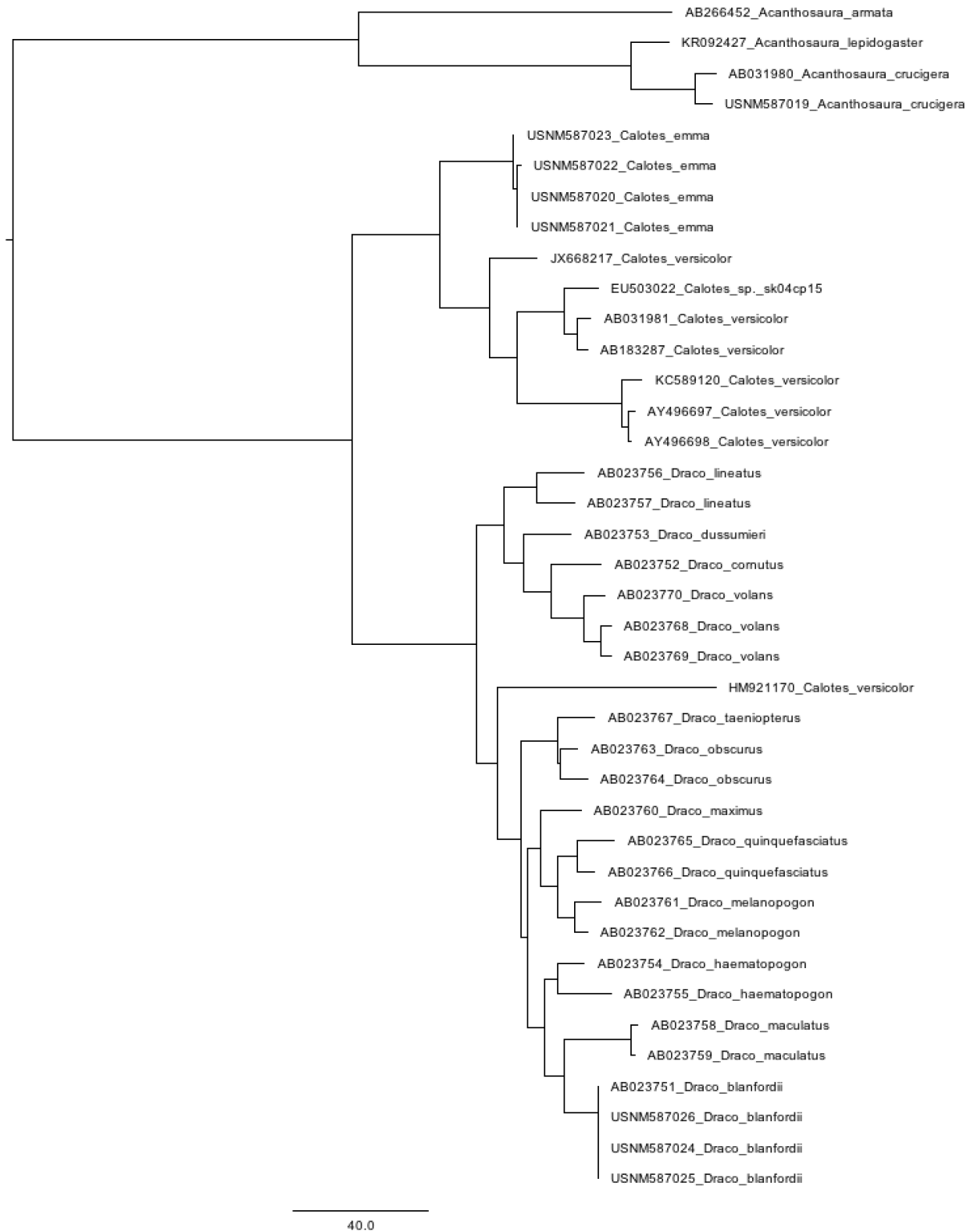
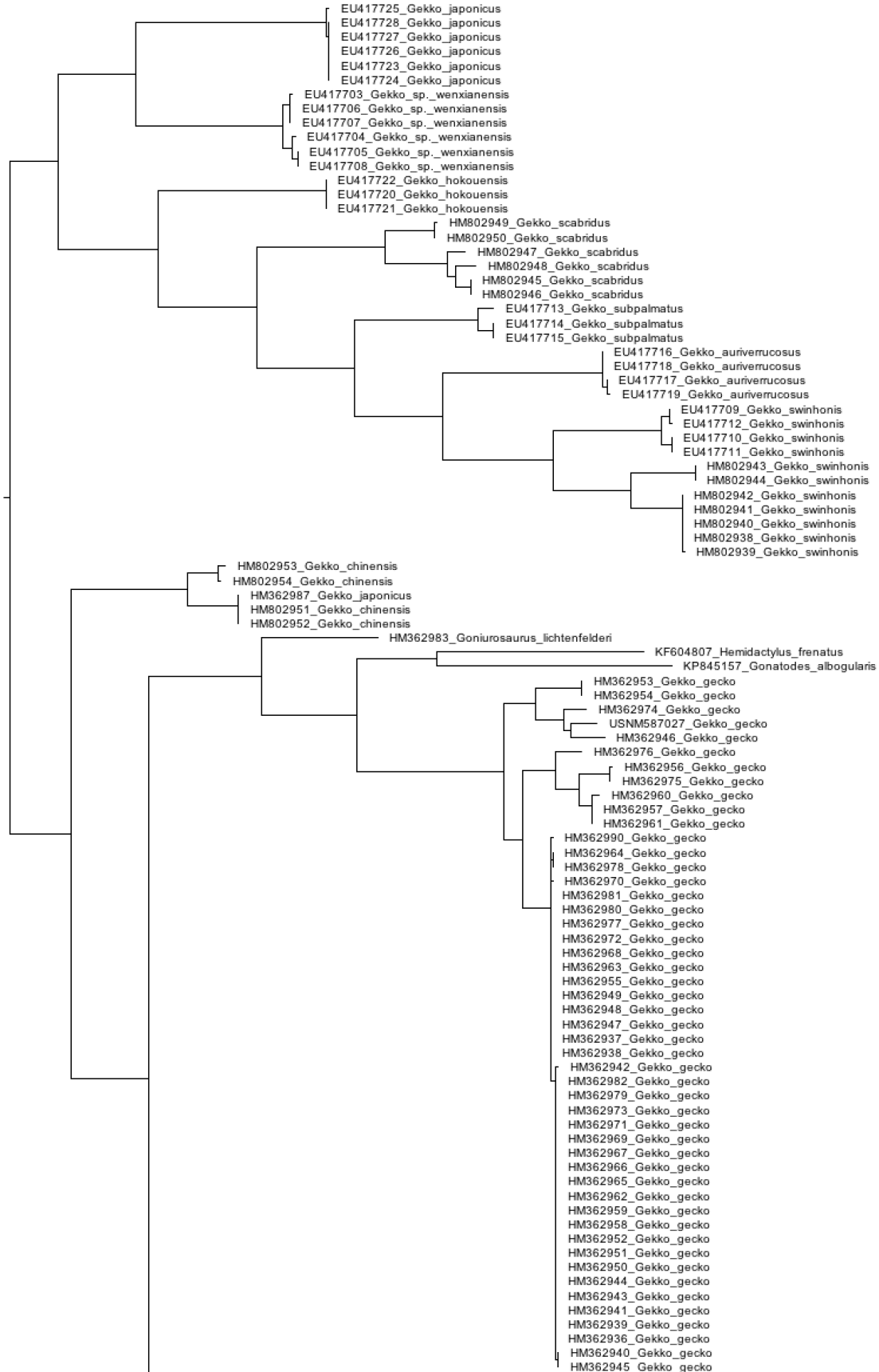


Fig. 8. Agamidae 16S neighbor-joining tree.

## Supplementary Files: Mulcahy et al., Filling the BINs of Life



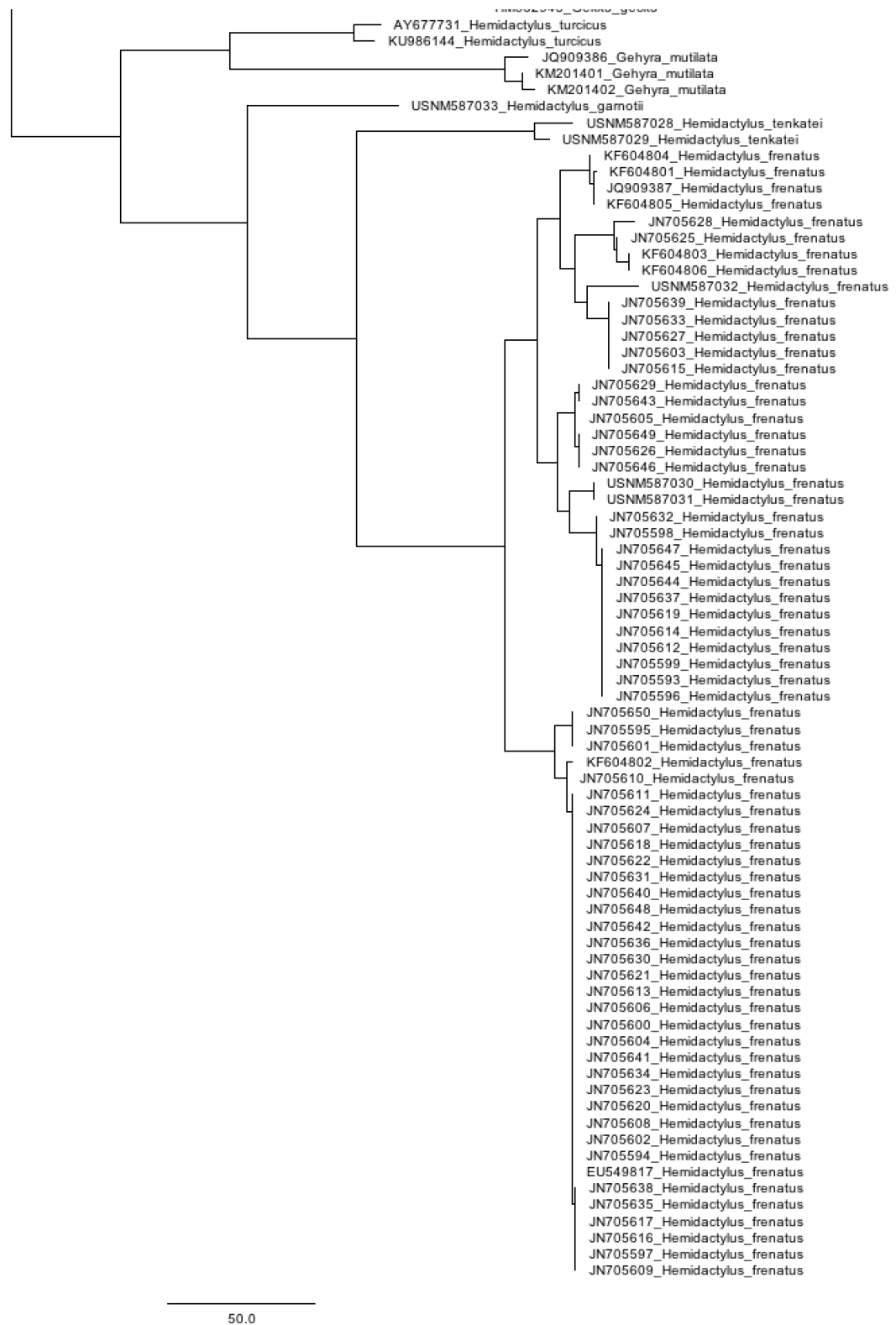


Fig. 9. Gekkonidae 16S neighbor-joining tree.

Supplementary Files: Mulcahy et al., Filling the BINs of Life

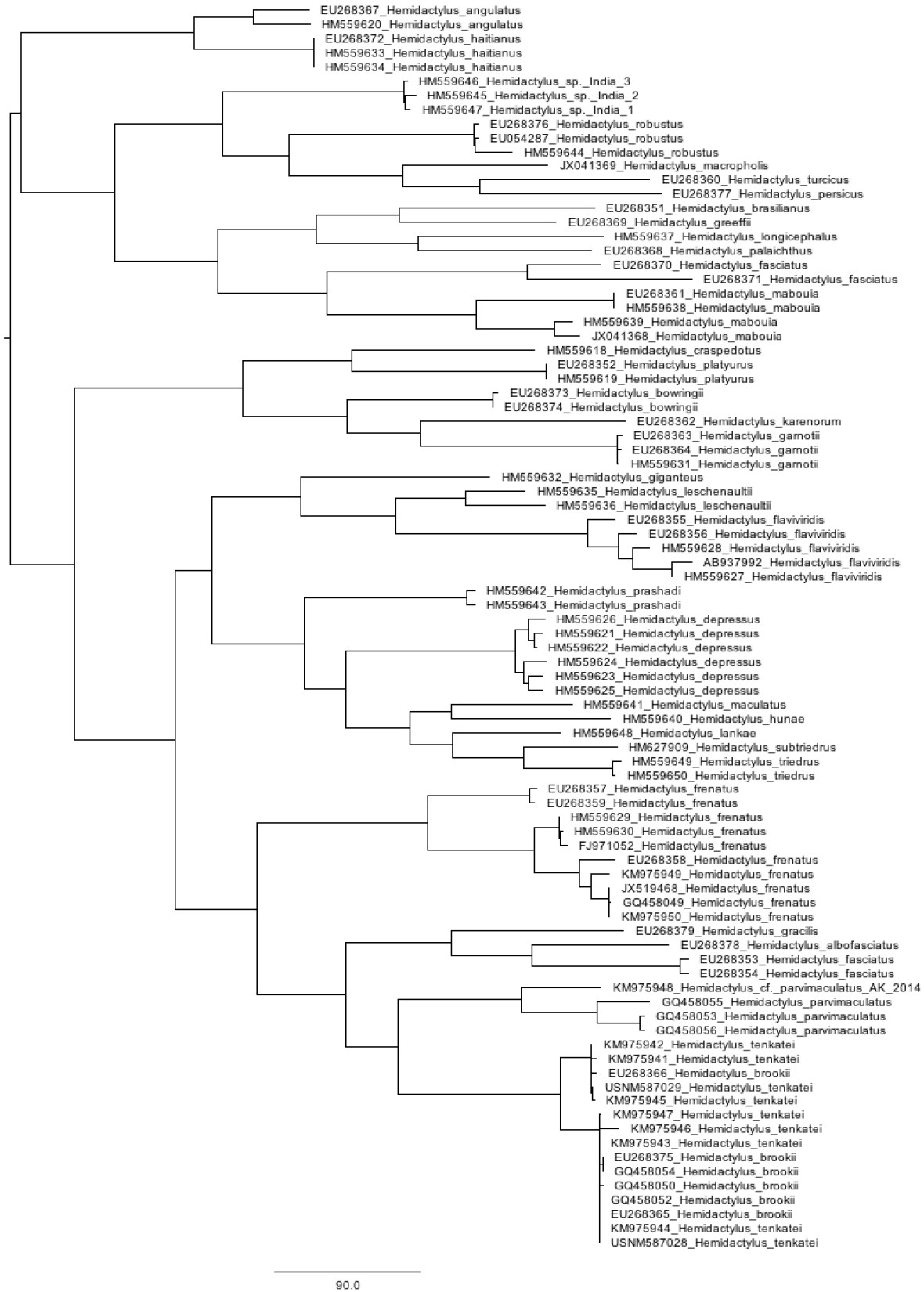
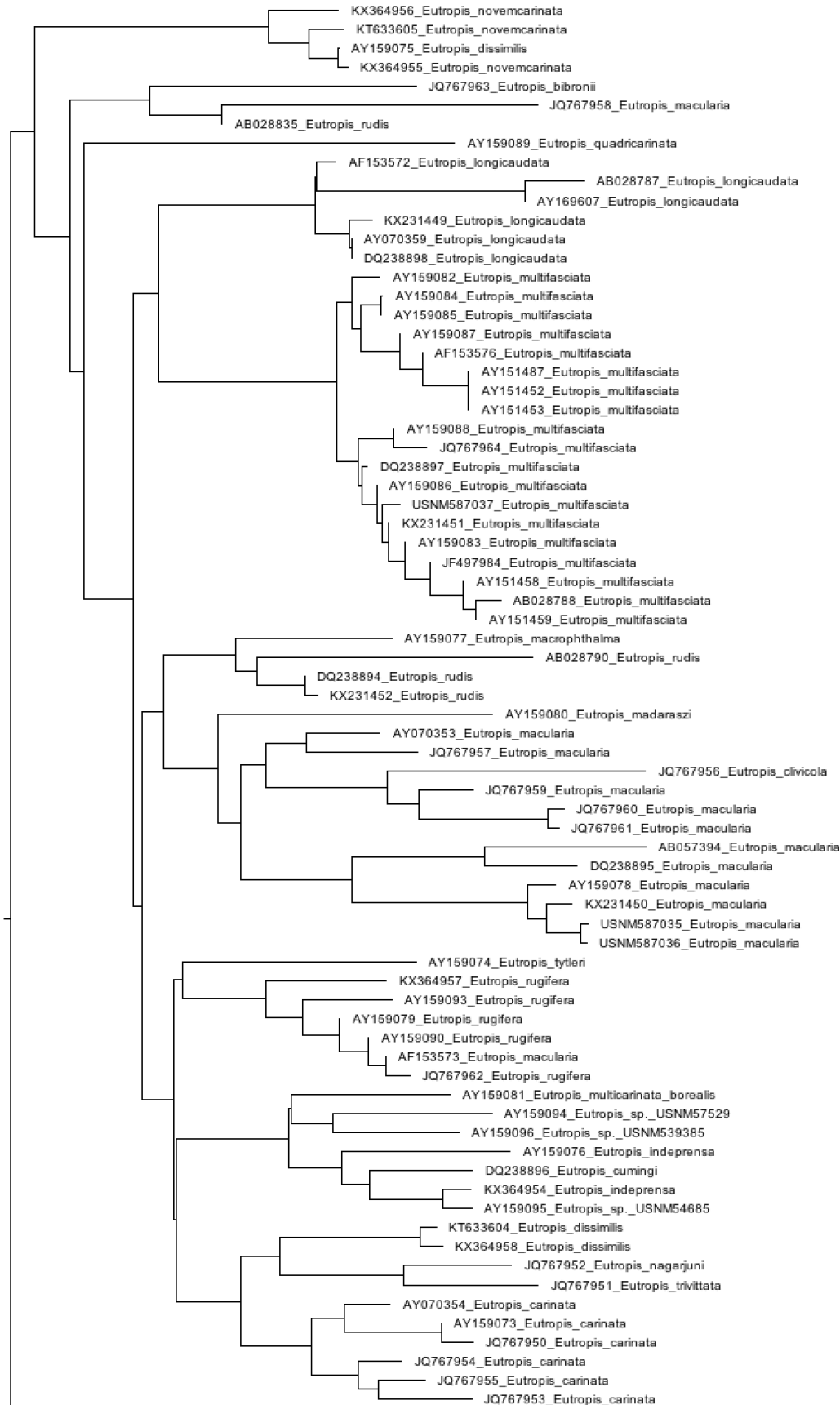


Fig. 10. Gekkonidae ND2 neighbor-joining tree.

# Supplementary Files: Mulcahy et al., Filling the BINs of Life



Supplementary Files: Mulcahy et al., Filling the BINs of Life

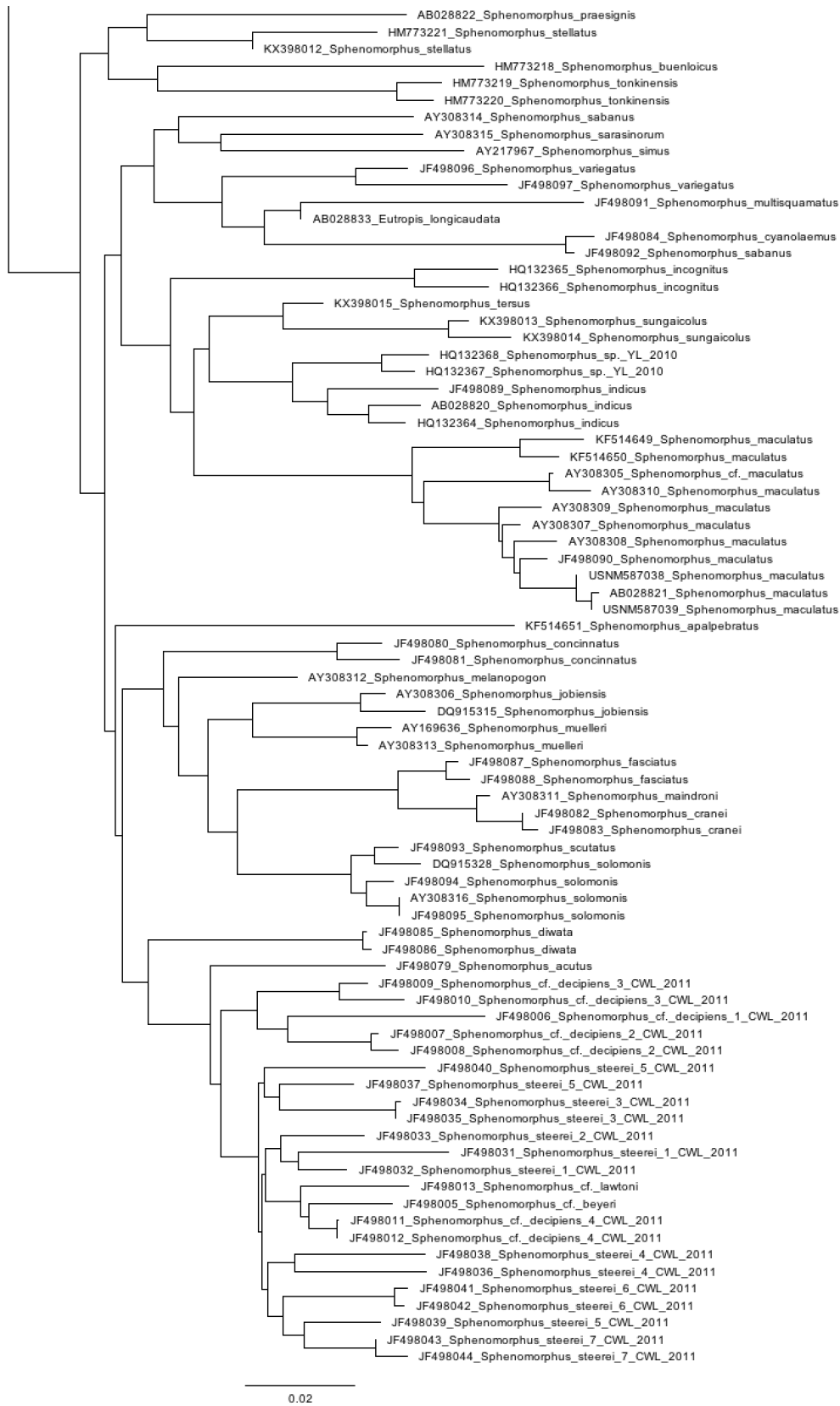


Fig. 11. Scincidae 16S neighbor-joining tree.