

A remarkable new *Awas* Löbl from southern China (Coleoptera, Staphylinidae, Pselaphinae)

Zi-Wei Yin¹, Jia-Wei Shen¹, Li-Zhen Li¹

¹Department of Biology, College of Life and Environmental Sciences, Shanghai Normal University, 100 Guilin Road, Shanghai, 200234, P. R. China

Corresponding author: Li-Zhen Li (lizhenli@shnu.edu.cn)

Academic editor: J. Klimaszewski | Received 8 July 2015 | Accepted 3 September 2015 | Published 23 September 2015

<http://zoobank.org/DDB36C81-4441-4CA4-A8C6-0738A65F91A4>

Citation: Yin Z-W, Shen J-W, Li L-Z (2015) A remarkable new *Awas* Löbl from southern China (Coleoptera, Staphylinidae, Pselaphinae). ZooKeys 522: 153–158. doi: 10.3897/zookeys.522.6109

Abstract

A new distinctive species of the rare Oriental goniacerine genus *Awas* Löbl, *A. gigas* **sp. n.**, is described and illustrated, based on three males and fourteen females taken at the Daoyao Shan Natural Reserve in the southern Chinese province of Guangxi. All specimens were collected from colonies of the ant genus *Pachycondyla* F. Smith nesting in decomposing woods.

Keywords

Awas, new species, myrmecophile, *Pachycondyla*, Oriental region

Introduction

The genus *Awas* Löbl currently contains six described species scattered throughout the Malay Peninsula, Taiwan, and continental China (Löbl 1994; Nomura 1995; Nomura and Idris 2004; Yin, Li and Zhao 2010; Yin and Li 2012). After a discussion of the morphological details and a phylogenetic analysis of the genus, Löbl (1994) placed *Awas* in the goniacerine tribe Arnylliini, as a sister taxon of *Harmophorus* Motschulsky. Members of *Awas* are unique in having a conspicuously elongate postocular region of the head, and a relatively small, basally strongly constricted abdomen in contrast to the large body.

All *Awes* species are rare in scientific collections, known from one (*A. giraffa* Löbl, *A. sinicus* Yin & Li, *A. kayan* Yin & Li, *A. loebli* Yin & Li), four (*A. rajah* Nomura & Idris), and five (*A. shunichii* Nomura) specimens (additional records for *A. rajah* and *A. shunichii* provided in Sugaya and Nomura 2003; Nomura and Idris 2005). Information of the habitat of the known species are largely limited due to the inadequate number of specimens: *A. giraffa*, *A. shunichii*, *A. sinicus*, and *A. kayan* were collected from leaf litter, and *A. rajah* and *A. loebli* were taken by flight intercept traps.

In July 2014, our team collected two males and two females of an additional species from a colony of a *Pachycondyla* ant at the Dayao Shan Natural Reserve in the southern Chinese province of Guangxi. With the knowledge of the host ant, a second survey in the same locality was conducted in May 2015, and another thirteen specimens (one male, twelve females) were found in several colonies of the same ant species. Based on the above material, a new species is formally described, and compared to the known congeners. This species is distinct in having the largest body size of more than 5.0 mm.

Material and methods

All material treated in this paper is housed in the Insect Collection of Shanghai Normal University (SNUC), Shanghai, China.

A slash is used to separate different labels. Authors' notes are included in brackets. Each type specimen bears a following label: 'HOLOTYPE (red), or PARATYPE (yellow), ♂ (or ♀), *Awes gigas* sp. n., det. Zi-Wei Yin, 2015'.

The following abbreviations are applied: **AL** – length of the abdomen along the midline; **AnL** – length of the antenna; **AW** – maximum width of the abdomen; **EL** – length of the elytra along the sutural line; **EW** – maximum width of the elytra; **HL** – length of the head from the anterior clypeal margin to the occipital constriction; **HW** – width of the head across eyes; **PL** – length of the pronotum along the midline; **PW** – maximum width of the pronotum. Length of the body is a combination of HL, PL, EL, and AL.

Description

Awes gigas sp. n.

<http://zoobank.org/87EE660C-C902-44AF-AA1C-DA3B20A4A817>

Figs 1–3

Type material (3 ♂♂, 14 ♀♀). **Holotype** (in SNUC): **CHINA**: ♂, labeled 'China: Guangxi, Jinxiu Hsien (金秀县), Dayao Shan N. R. (大瑶山自然保护区), 16 km (16 公里), 24°08'11"N, 110°14'28"E, *Fagus* forest, rotten woods, colony of *Pachycondyla* ant, 1100 m, 17.vii.2014, leg. Z. Peng'. **Paratypes** (in SNUC): **CHINA**: 1 ♂, 2 ♀♀,

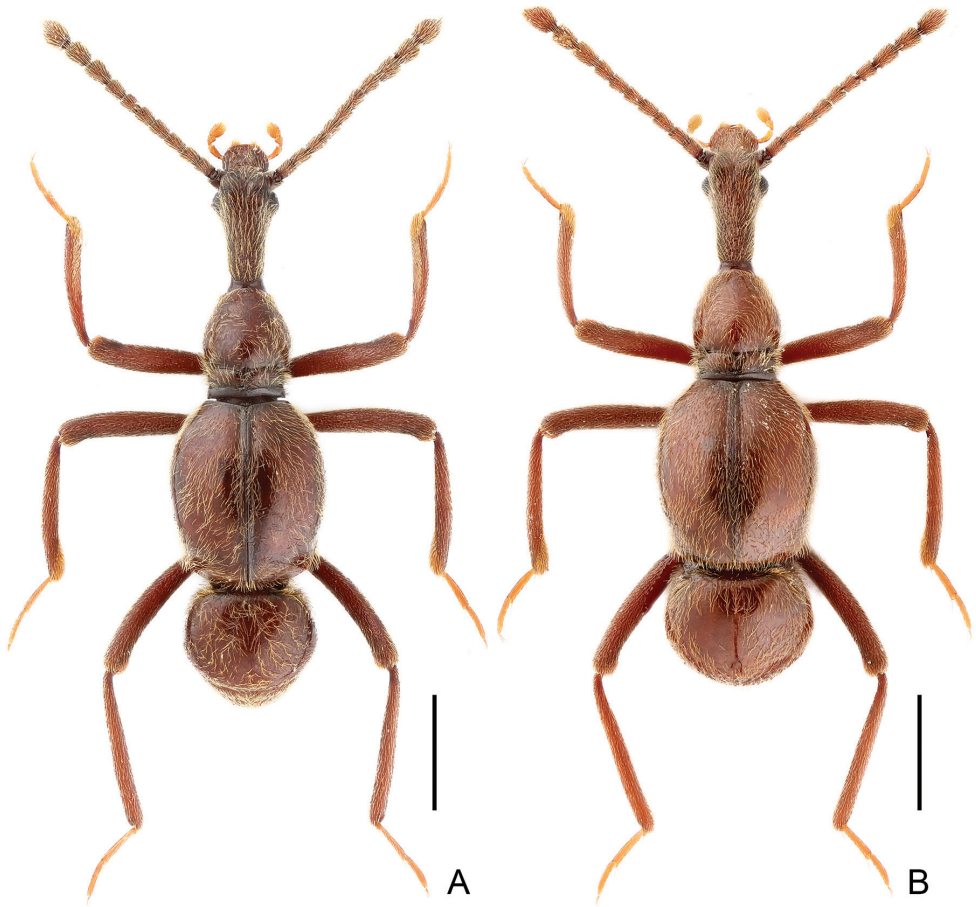


Figure 1. Dorsal habitus of *Awas gigas*. **A** Male **B** Female Scales: 1.0 mm.

same label data as the holotype; 1 ♀, same locality, '16 km, 24°08'25"N, 110°15'38"E, 960 m, colony of *Pachycondyla* ants, 01.vi.2015, leg. J.-W. Shen & Z. Peng'; 1 ♂ (antennomeres VII–VIII closely conjoint, deformed status), 11 ♀♀, also Dayao Shan N. R., 'Laoshan Station (老山林场), 24°07'02"N, 110°11'51"E, 950 m, *Pachycondyla* ant, 31.v.2015, leg. J.-W. Shen & Z. Peng'.

Diagnosis. Body large-sized, length 4.79–5.12 mm; head with a greatly elongate postocular region; pronotum relatively stout, basolateral margins moderately incised at level of antebasal sulcus, lacking distinct setal tufts; elytra lacking basal fovea. Female has a relatively larger abdomen than male.

Description. Male (Fig. 1A). BL 4.79–4.96 mm; body reddish-brown, mouth parts and tarsi lighter. Head (Fig. 2B–C) strongly elongate, HL 1.24–1.35 mm, HW 0.59–0.61 mm, densely punctate and roughly sculptured; pubescence directed anteriorly; anterior frontal margin roundly protruding medially; postocular margins gradually narrowed toward occipital constriction; gula slightly depressed, foveae in longitu-



Figure 2. Diagnostic characters of male *Awas gigas*. **A** Right antenna **B** Head, in dorsal view **C** Same, in lateral view **D** Pronotum **E** Elytral base **F** Aedeagus, in dorsal view **G** Same, in lateral view **H** Same, in ventral view. Scales: A–D = 0.5 mm, E–H = 0.2 mm.

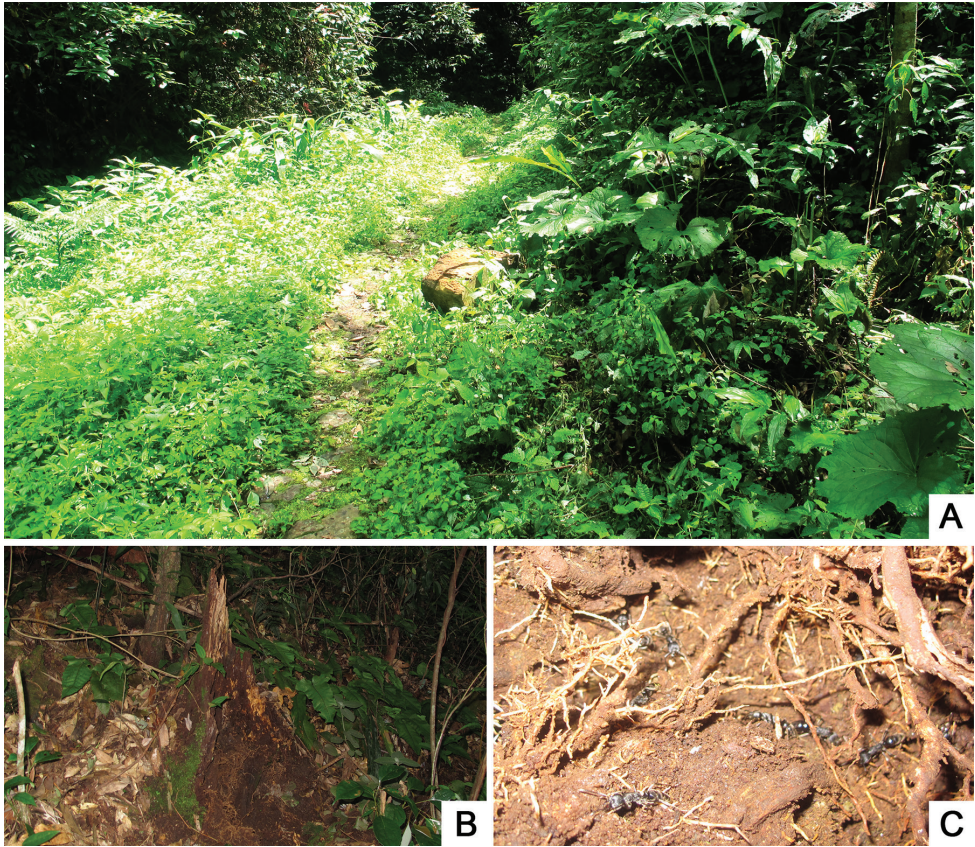


Figure 3. Habitat of *Awas gigas*. **A** General environment of the collection site **B** A decomposing wood from where a colony of *Pachycondyla* was found **C** Inside of the ant colony.

dinal slit; eyes prominent, situated anterior head mid-length, each eye composed of about 95 facets; maxillary palpi with palpomeres I short, II elongate, slightly expanded apically, III nearly triangular, IV oval, with long, membranous apical palpal cone; AnL 2.13 mm, antennomeres IX–XI (Fig. 2A) wider than previous ones. Pronotum (Fig. 2D) longer than wide, PL 0.91–0.94 mm, PW 0.74–0.78 mm; finely punctate, with T-shaped antebasal sulcus; posterior margin with band of transverse microsculpture. Prosternum with dense admesal pubescence, pubescence on lateral margins sparser. Elytra slightly longer than wide, EL 1.50–1.54 mm, EW 1.35–1.41 mm, widest at basal two-fifths, rounded laterally, narrowed basally and apically, lacking basal fovea (Fig. 2E), with complete sutural striae, densely setose. Legs slender, profemora with indistinct preapical denticle. Abdomen about as long as wide, AL 0.96–1.31 mm, AW 1.18–1.20 mm; tergite IV largest, basolateral margins densely setose. Aedeagus (Fig. 2F–H) symmetric, length 0.66–0.67 mm; median lobe truncate apically; endophallus with hair-like structure; with ventrally curved hook-like parameres.

Female (Fig. 1B). Similar to male in general, size larger; with relatively larger abdomen; each eye composed of about 75 facets. Measurements: BL 4.89–5.12 mm, HL 1.26–1.28 mm, HW 0.56–0.57 mm, AnL 2.03–2.13 mm, PL 0.92–0.93 mm, PW 0.76–0.77 mm, EL 1.54–1.61 mm, EW 1.37–1.39 mm, AL 1.17–1.30 mm, AW 1.27–1.28 mm.

Comparative notes. At first glance *Awes gigas* is very distinct from other species in the genus by possessing a large body size. It shares with *A. giraffa* and *A. rajah* the lack of two pairs of setose tufts on the basolateral margins of the pronotum, and lack of a distinct basal elytral fovea, but can be separated from both by the relatively stouter pronotum. *Awes kayan* also lacks distinct pronotal setose tufts, but has each elytron possessing a well-defined basal fovea, and the elytra are broader at basal third.

Biology. All individuals of *Awes gigas* were collected from colonies of a *Pachycondyla* ant nesting inside or under decomposing woods in broad-leaved forests (Fig. 3).

Distribution. Southern China: Guangxi.

Etymology. The specific epithet indicates the large body size of the new species.

Acknowledgments

Jan Klimaszewski (Quebec, Canada) and one anonymous reviewer critically read the manuscript. The present study was supported by the Science and Technology Commission of Shanghai Municipality (No. 15YF1408700) and National Science Foundation of China (No. 31172134).

References

- Löbl I (1994) *Awes giraffa* gen. n., sp. n. (Coleoptera, Pselaphidae) from Malaysia and the classification of Goniacerinae. *Revue Suisse de Zoologie* 101: 685–697. doi: 10.5962/bhl.part.79924
- Nomura S (1995) Description of a new species of the genus *Awes* (Coleoptera, Pselaphidae) from Taiwan. *Special Bulletin of the Japanese Society of Coleopterology* 4: 359–363.
- Nomura S, Idris AG (2005) Faunistic notes on the pselaphine species of the supertribes Goniaceritae, Pselaphitae and Clavigeritae from Malaysia and Singapore (Coleoptera: Staphylinidae: Pselaphinae). *Serangga* 10: 1–36.
- Sugaya H, Nomura S (2003) Additional records of *Awes shunichii* (Coleoptera, Staphylinidae, Pselaphinae), with notes on its habitat in Taiwan. *Elytra* 31: 183–186.
- Yin ZW, Li LZ, Zhao MJ (2010) Discovery of the rare genus *Awes* in mainland China with description of a new species (Coleoptera: Staphylinidae: Pselaphinae: Goniaceritae). *Acta Entomologica Musci Nationalis Pragae* 50: 477–482.
- Yin ZW, Li LZ (2012) Two new species of the genus *Awes* from Central and East China (Coleoptera: Staphylinidae: Pselaphinae). *Entomologica Musci Nationalis Pragae* 52: 161–171.